



**ELECTORAL AREA 'K' –
THE ARROW LAKES
OFFICIAL COMMUNITY PLAN
BYLAW NO. 2022, 2009**

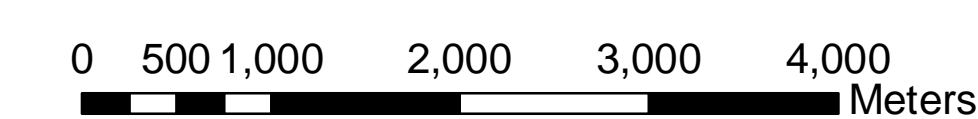
LEGEND

- Electoral Area
- Outside Plan Area
- Area K OCP Area

OCP DESIGNATIONS

- Community Residential (R1)
- Country Residential (R2)
- Rural Residential (R3)
- Rural Resource (R4)
- General Commercial (C1)
- Tourist Commercial (C2)
- Parks & Rec., Culture & Heritage (PA)
- Institutional (I)
- Industrial (M)
- Agriculture (AG)
- Open Space (OS)
- Environmental Reserve (ER)
- Quarry (Q)

Map Projection: UTM Zone 11
Map Datum: NAD83 Scale: 1:40000
Plotted: December, 2009



CAVEAT

The boundaries of the Land Use Designations listed in this bylaw together with explanatory legends, notations, or references in respect thereof, are delineated and described on the Land Use Designation Map. The Land Use Designation Map consists of the computer record compiled by means of a geographic information system. The Land Use Designation Map is kept in the Office of the Secretary at the Regional District Office. The Land Use Designation Map forms part of this bylaw. A generalized diagrammatic representation of the Land Use Designation Map is annexed to this bylaw as Schedule B.

The Land Use Designation Map forming part of this bylaw is at a scale that provides clear and more detailed information than the generalized diagrammatic representation shown on Schedule 'B' of Bylaw No. 2022. In the event of a conflict of inconsistency between Schedule 'B' and the Land Use Designation Map, and in the event that the Land Use Designation Map shows and provides more information than Schedule 'B', then in all such cases the Land Use Designation Map shall govern.

**SCHEDULE B
LAND USE DESIGNATIONS
Map 1 of 3 (North)**

This is Schedule 'B' Map 1 of 3 of Electoral Area 'K' – The Arrow Lakes Official Community Plan Bylaw No. 2022, 2009

ADOPTED this ___ day of ___, 2009.

Chair _____

Secretary _____

DATA SOURCES

The following sources of data are updated as changes occur:

Cadastral Lot - Surveyed lots/parcels of land: Sources: Crown Land Registry Services and RDCK

District Lot: Source: Crown Land Registry Services, Integrated Cadastral Initiative (ICI) and RDCK

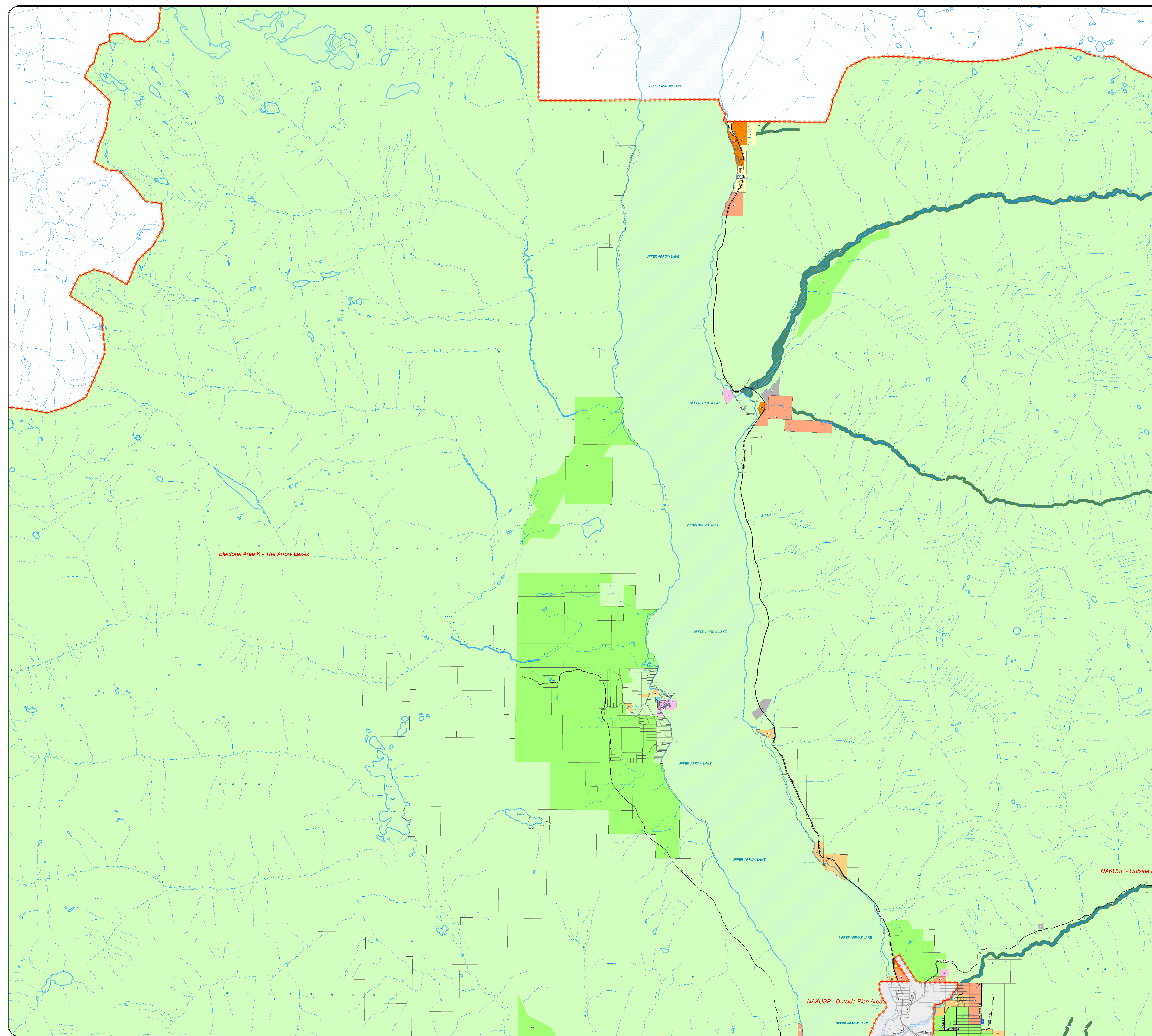
TRIM Data - Planimetry, Unsurveyed Roads, and Contours: Source: Ministry of Water, Land and Air Protection

ALR - Agricultural Land Reserve: Source: BC Land Reserve Commission

Zoning - Rural Land Use, Land Use and Zoning Bylaws, where bylaws are in place; Source: RDCK

Roads - Road centerline compiled 2008; Source: RDCK

Regional District of Central Kootenay
Box 590, 202 Lakeside Drive, Nelson, BC V1L 5R4
Phone: (250) 352-6665
Toll-Free: 1-800-265-7325 (BC)
Fax: (250) 352-9300 Internet: www.rdkc.bc.ca





**ELECTORAL AREA 'K' –
THE ARROW LAKES
OFFICIAL COMMUNITY PLAN
BYLAW NO. 2022, 2009**

LEGEND

- Electoral Area
- Outside Plan Area
- Area K OCP Area

OCP DESIGNATIONS

- Community Residential (R1)
- Country Residential (R2)
- Rural Residential (R3)
- Rural Resource (R4)
- General Commercial (C1)
- Tourist Commercial (C2)
- Parks & Rec., Culture & Heritage (PA)
- Institutional (I)
- Industrial (M)
- Agriculture (AG)
- Open Space (OS)
- Environmental Reserve (ER)
- Quarry (Q)

Map Projection: UTM Zone 11
Map Datum: NAD83 Scale: 1:40000
Plotted: December, 2009



CAVEAT

The boundaries of the Land Use Designations listed in this bylaw together with explanatory legends, notations, or references in respect thereof, are delineated and described on the Land Use Designation Map. The Land Use Designation Map consists of the computer record compiled by means of a geographic information system. The Land Use Designation Map is kept in the Office of the Secretary at the Regional District Office. The Land Use Designation Map forms part of this bylaw. A generalized diagrammatic representation of the Land Use Designation Map is annexed to this bylaw as Schedule B.

The Land Use Designation Map forming part of this bylaw is at a scale that provides clear and more detailed information than the generalized diagrammatic representation shown on Schedule 'B' of Bylaw No. 2022. In the event of a conflict of inconsistency between Schedule 'B' and the Land Use Designation Map, and in the event that the Land Use Designation Map shows and provides more information than Schedule 'B', then in all such cases the Land Use Designation Map shall govern.

**SCHEDULE B
LAND USE DESIGNATIONS
Map 2 of 3 (Central)**

This is Schedule 'B' Map 2 of 3 of Electoral Area 'K' – The Arrow Lakes Official Community Plan Bylaw No. 2022, 2009

ADOPTED this ___ day of ___, 2009.

Chair _____

Secretary _____

DATA SOURCES

The following sources of data are updated as changes occur:

Cadastral Lot - Surveyed lots/parcels of land:
Sources: Crown Land Registry Services and RDCK

District Lot: Source: Crown Land Registry Services, Integrated Cadastral Initiative (ICI) and RDCK

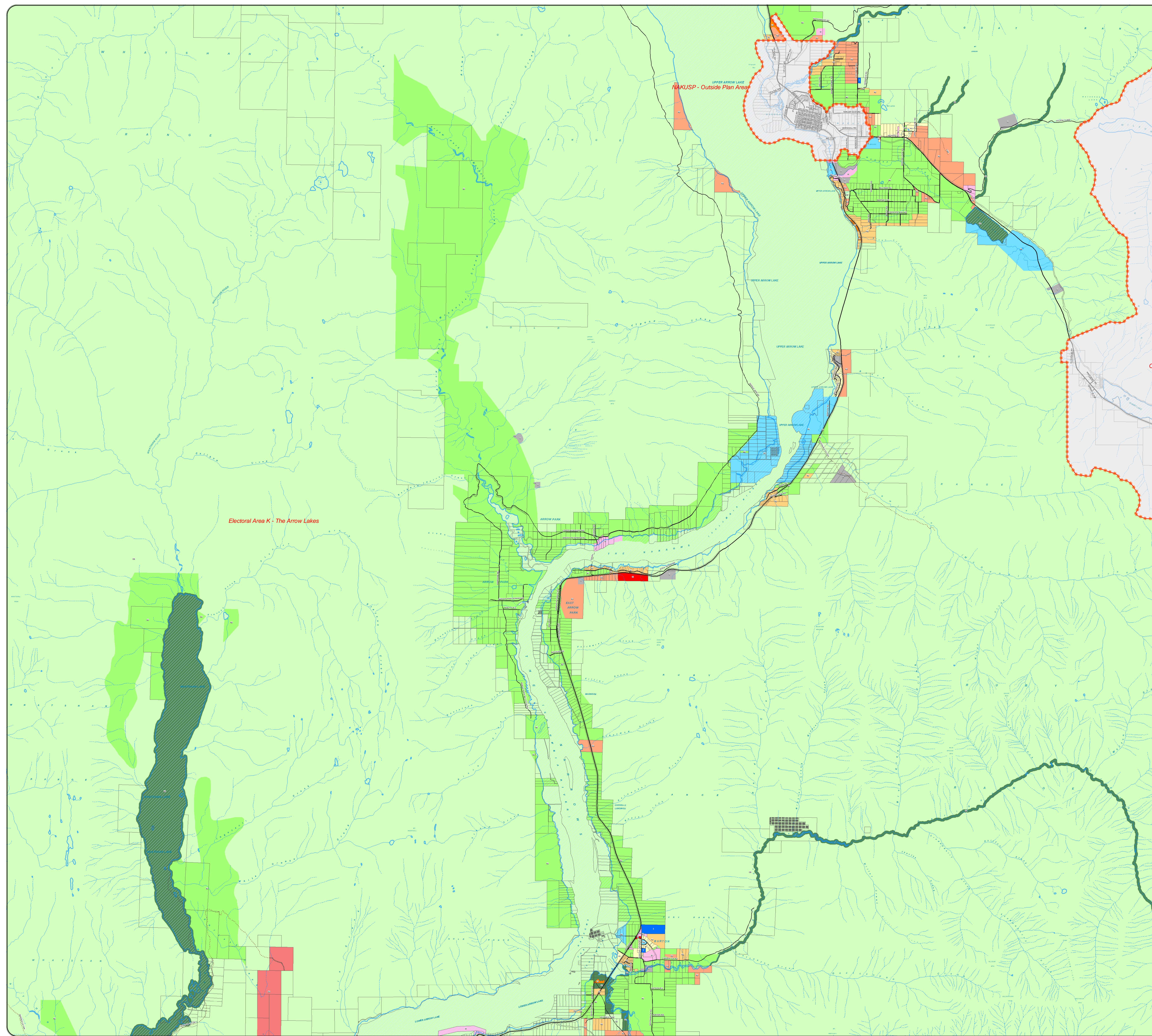
TRIM Data - Planimetry, Unsurveyed Roads, and Contours: Source: Ministry of Water, Land and Air Protection

ALR - Agricultural Land Reserve: Source: BC Land Reserve Commission

Zoning - Rural Land Use, Land Use and Zoning Bylaws, where bylaws are in place: Source: RDCK

Roads - Road centerline compiled 2008: Source: RDCK

Regional District of Central Kootenay
Box 590, 202 Lakeside Drive, Nelson, BC V1L 5R4
Phone: (250) 352-6665
Toll-Free: 1-800-265-7325 (BC)
Fax: (250) 352-9300 Internet: www.rdkc.bc.ca





**ELECTORAL AREA 'K' –
THE ARROW LAKES
OFFICIAL COMMUNITY PLAN
BYLAW NO. 2022, 2009**

LEGEND

- Electoral Area
- Outside Plan Area
- Area K OCP Area

OCP DESIGNATIONS

- Community Residential (R1)
- Country Residential (R2)
- Rural Residential (R3)
- Rural Resource (R4)
- General Commercial (C1)
- Tourist Commercial (C2)
- Parks & Rec., Culture & Heritage (PA)
- Institutional (I)
- Industrial (M)
- Agriculture (AG)
- Open Space (OS)
- Environmental Reserve (ER)
- Quarry (Q)

Map Projection: UTM Zone 11
Map Datum: NAD83 Scale: 1:40000
Plotted: December, 2009



CAVEAT

The boundaries of the Land Use Designations listed in this bylaw together with explanatory legends, notations, or references in respect thereof, are delineated and described on the Land Use Designation Map. The Land Use Designation Map consists of the computer record compiled by means of a geographic information system. The Land Use Designation Map is kept in the Office of the Secretary at the Regional District Office. The Land Use Designation Map forms part of this bylaw. A generalized diagrammatic representation of the Land Use Designation Map is annexed to this bylaw as Schedule B.

The Land Use Designation Map forming part of this bylaw is at a scale that provides clear and more detailed information than the generalized diagrammatic representation shown on Schedule 'B' of Bylaw No. 2022. In the event of a conflict of inconsistency between Schedule 'B' and the Land Use Designation Map, and in the event that the Land Use Designation Map shows and provides more information than Schedule 'B', then in all such cases the Land Use Designation Map shall govern.

**SCHEDULE B
LAND USE DESIGNATIONS
Map 3 of 3 (South)**

This is Schedule 'B' Map 3 of 3 of Electoral Area 'K' – The Arrow Lakes Official Community Plan Bylaw No. 2022, 2009

ADOPTED this ___ day of ___, 2009.

Chair _____

Secretary _____

DATA SOURCES

The following sources of data are updated as changes occur:

Cadastral Lot - Surveyed lots/parcels of land:
Sources: Crown Land Registry Services and RDCK

District Lot: Source: Crown Land Registry Services, Integrated Cadastral Initiative (ICI) and RDCK

TRIM Data - Planimetry, Unsurveyed Roads, and Contours: Source: Ministry of Water, Land and Air Protection

ALR - Agricultural Land Reserve: Source: BC Land Reserve Commission

Zoning - Rural Land Use, Land Use and Zoning Bylaws, where bylaws are in place: Source: RDCK

Roads - Road centerline compiled 2008: Source: RDCK

Regional District of Central Kootenay
Box 590, 202 Lakeside Drive, Nelson, BC V1L 5R4
Phone: (250) 352-6665
Toll-Free: 1-800-265-7325 (BC)
Fax: (250) 352-9300 Internet: www.rdkc.bc.ca

Electoral Area K - The Arrow Lakes

Outside Plan Area

