



Media Release

Date: July 20, 2021

For immediate release

8:30 pm

Evacuation Order issued for Fauquier

Nelson, BC: On the recommendation of the BC Wildfire Service (BCWS), the Regional District of Central Kootenay (RDCK) has issued an Evacuation ORDER for the community of Fauquier in Electoral Area K, north to Grassy Point due to the Octopus Creek wildfire (N51800). **This is in addition to the previous order issued earlier this evening due to the quickly evolving situation.** By expanding the ORDER, both Applegrove and Fauquier are now under an Evacuation ORDER for a total of 168 properties.

List of **ALL ADDRESSES** under the current Evacuation Order are (see map below):

220 APPLGROVE RD	7810 BRYDGES RD	7638 HWY 6
240 APPLGROVE RD	7810 BRYDGES RD	7644 HWY 6
348 APPLGROVE RD	7833 BRYDGES RD	7660 HWY 6
430 APPLGROVE RD	107 ELM ST	7670 HWY 6
504 APPLGROVE RD	110 ELM ST	7703 HWY 6
604 APPLGROVE RD	113 ELM ST	7759 HWY 6
612 APPLGROVE RD	119 ELM ST	7762 HWY 6
620 APPLGROVE RD	115 FAUQUIER LOWER RD	7767 HWY 6
685 APPLGROVE RD	130 FAUQUIER LOWER RD	7786 HWY 6
780 APPLGROVE RD	130 FAUQUIER LOWER RD	7812 HWY 6
784 APPLGROVE RD	130 FAUQUIER LOWER RD	7830 HWY 6
802 APPLGROVE RD	130 FAUQUIER LOWER RD	7867 HWY 6
920 APPLGROVE RD	130 FAUQUIER LOWER RD	7880 HWY 6
1210 APPLGROVE RD	130 FAUQUIER LOWER RD	7911 HWY 6
1320 APPLGROVE RD	205 FAUQUIER LOWER RD	7954 HWY 6
1500 APPLGROVE RD	213 FAUQUIER LOWER RD	7955 HWY 6
1530 APPLGROVE RD	217 FAUQUIER LOWER RD	7980 HWY 6
1710 APPLGROVE RD	218 FAUQUIER LOWER RD	8034 HWY 6
7739 BRYDGES RD	7614 HWY 6	201 MAPLE ST
7796 BRYDGES RD	7615 HWY 6	202 MAPLE ST
7802 BRYDGES RD	7616 HWY 6	203 MAPLE ST
7803 BRYDGES RD	7630 HWY 6	204 MAPLE ST

205 MAPLE ST	7879 RODER RD	7844 STARLITE RD
206 MAPLE ST	301 SPRUCE ST	7845 STARLITE RD
207 MAPLE ST	302 SPRUCE ST	7925 STARLITE RD
208 MAPLE ST	304 SPRUCE ST	7950 STARLITE RD
209 MAPLE ST	305 SPRUCE ST	7990 STARLITE RD
210 MAPLE ST	306 SPRUCE ST	7715 STEWART RD
212 MAPLE ST	308 SPRUCE ST	7725 STEWART RD
213 MAPLE ST	308 SPRUCE ST	7735 STEWART RD
214 MAPLE ST	310 SPRUCE ST	7749 STEWART RD
215 MAPLE ST	311 SPRUCE ST	401 WILLOW ST
216 MAPLE ST	312 SPRUCE ST	413 WILLOW ST
217 MAPLE ST	313 SPRUCE ST	505 WILLOW ST
218 MAPLE ST	314 SPRUCE ST	509 WILLOW ST
219 MAPLE ST	316 SPRUCE ST	511 WILLOW ST
220 MAPLE ST	317 SPRUCE ST	512 WILLOW ST
221 MAPLE ST	318 SPRUCE ST	513 WILLOW ST
223 MAPLE ST	320 SPRUCE ST	516 WILLOW ST
224 MAPLE ST	322 SPRUCE ST	518 WILLOW ST
225 MAPLE ST	324 SPRUCE ST	519 WILLOW ST
101 OAK ST	325 SPRUCE ST	520 WILLOW ST
117 OAK ST	326 SPRUCE ST	526 WILLOW ST
119 OAK ST	327 SPRUCE ST	531 WILLOW ST
121 OAK ST	329 SPRUCE ST	541 WILLOW ST
127 OAK ST	331 SPRUCE ST	544 WILLOW ST
129 OAK ST	333 SPRUCE ST	546 WILLOW ST
131 OAK ST	335 SPRUCE ST	548 WILLOW ST
135 OAK ST	344 SPRUCE ST	551 WILLOW ST
139 OAK ST	345 SPRUCE ST	552 WILLOW ST
7705 OMEN RD	347 SPRUCE ST	556 WILLOW ST
7844 RODER RD	351 SPRUCE ST	561 WILLOW ST
7853 RODER RD	302A SPRUCE ST	562 WILLOW ST
7860 RODER RD	7818 STARLITE RD	564 WILLOW ST
7868 RODER RD	7826 STARLITE RD	576 WILLOW ST
7875 RODER RD	7834 STARLITE RD	609 WILLOW ST

Residents and visitors are required to leave the Evacuation Order area immediately and **report to the Nakusp & District Sports Complex (200 8th Ave NW, Nakusp, BC)** or register online with Emergency Support Services (ESS) at <https://ess.gov.bc.ca/>. Short-term assistance for immediate needs of food, shelter, and clothing may be provided by ESS volunteers following registration at the above website. For further assistance you can call the RDCK Emergency Operations Centre (EOC) public inquiry line 250-352-7701.

Residents in the affected Evacuation Order area are encouraged to stay with friends and family. ESS may not be able to accommodate your pets, so make sure you have prepared your pets by having appropriate cages, food, water and bowls, and ensure they are wearing identification. You may wish to arrange to have your pets cared for by family or friends.

On July 16, the RDCK originally issued an Evacuation Alert for Fauquier. The Octopus Creek wildfire was originally discovered on July 11 and the BCWS has determined the cause to be lightning. It is approximately 2,940 hectares in size and is highly visible from Fauquier, Edgewood, Needles and surrounding areas.

The RDCK EOC will provide further updates as more information becomes available.

Additional Information:

- Current RDCK Evacuation Alerts, Orders and Rescinds: www.rdck.ca/eocinfo or call 250-352-7701
- [Sign up for RDCK Emergency Notification System to receive notifications](#)
- [BC Wildfire – Interactive Map of Current Fires](#)
- [Public weather alerts for BC from Environment Canada](#)
- [Highway closures and conditions from DriveBC](#)
- [For the BC Air Quality Health Index](#)
- [Emergency preparedness information and tips from the Prepared BC website](#)

Incorporated in 1965, the Regional District of Central Kootenay (RDCK) is a local government that serves 60,000 residents in 11 electoral areas and nine member municipalities. The RDCK provides more than 160 services, including community facilities, fire protection and emergency services, grants, planning and land use, regional parks, resource recovery and handling, transit, water services and much more. For more information about the RDCK, visit www.rdck.ca.

-30-

For media enquiries:

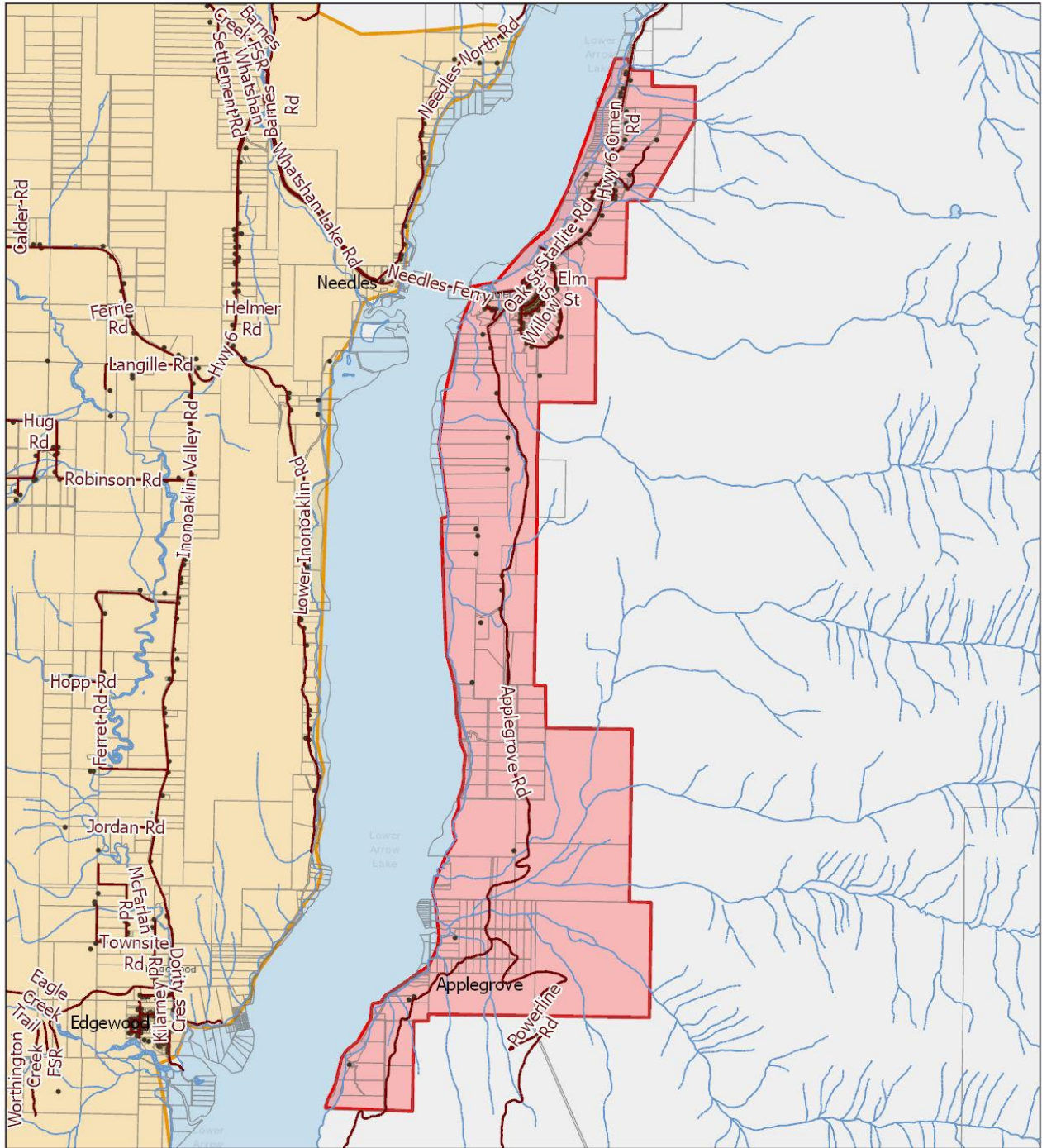
Dan Elliott

EOC Information Officer

Regional District of Central Kootenay

Tel: 250.352-7701

Email: eocinfo@rdck.bc.ca

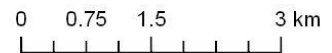


REGIONAL DISTRICT OF CENTRAL KOOTENAY
 Box 590, 202 Lakeside Drive,
 Nelson, BC V1L 5R4
 Phone: 1-800-268-7325 www.rdck.bc.ca
 maps@rdck.bc.ca

Octopus Creek Wildfire Evacuation Order

- | | |
|------------------|---------------|
| Evacuation Order | Roads |
| Evacuation Alert | Civic Address |
| | Legal Parcels |

Map Scale:
 1:70,000



The mapping information shown are approximate representations and should only be used for reference purposes. The Regional District of Central Kootenay is not responsible for any errors or omissions on this map.