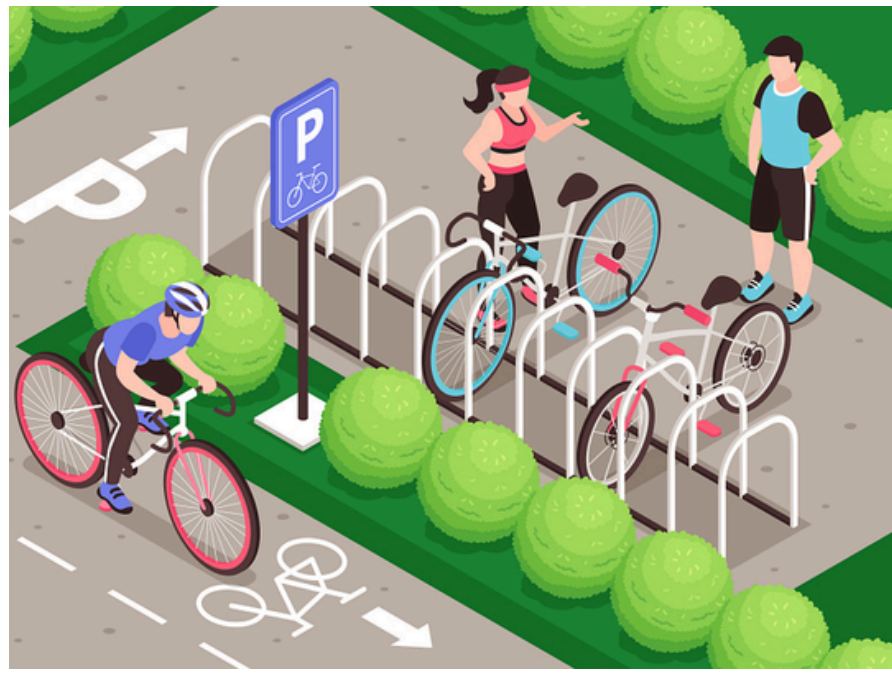


# ACTIVE TRANSPORTATION



## Safe & Secure Bike Parking

- At bus stops (Winlaw, park & pools)
- Covered (dry) parking
- In urban centers
- At markets/events



## Separated & Safer Bike Lanes

- Support municipalities
- Kaslo - Cooper Creek



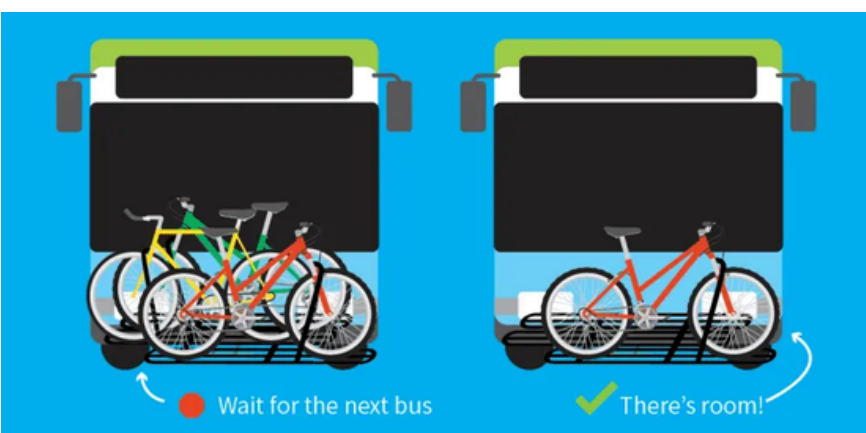
## Inter-Community Active Transportation Paths

- Castlegar-Nelson feasibility study
- Silverton-New Denver



## Maintenance for Active Transportation Paths

- Sweeping dust/gravel
- Clearing snow
- Resurfacing (i.e. New Denver - Rosebury)



## Bike Racks on Busses

- Bike/e-bike racks for taxis



## Support for E-bikes

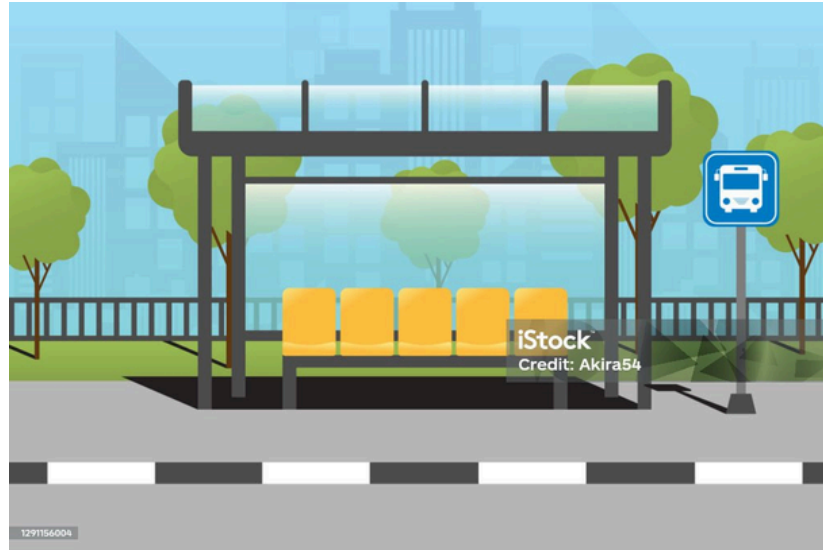
- Loan programs (i.e. Nelson)
- Route information/program
- Gear grants (rain, panniers)
- Discussion forum/network



## Non-Motorized Active Transportation Routes

- (i.e. Nelson-Salmo rail trail)

# TRANSIT & LOW CARBON



## Bus Shelters & Benches

- (i.e. @ Nelson Hospital)



## Improved Public Transit

- Increased routes & # of trips
- Intercommunity routes (i.e. Nakusp-Nelson, Silverton-New Denver, Nakusp - Revelstoke)
- On-demand transit?
- Bus driver training
- Trains?



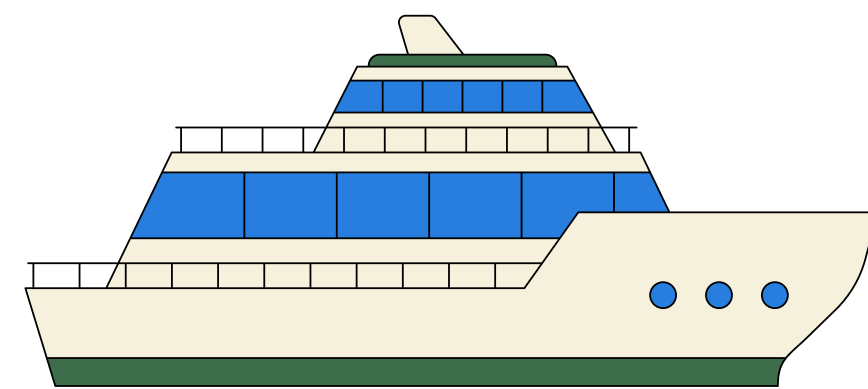
## Bus Pass Program

- For low-income and limited access groups/demographics
- Partner with large large employers/businesses



## Ridesharing

- Rural ride-hailing service
- Kootenay Carshare (Air Carshare)
- Kootenay Rideshare
- Bike/Scooter share?
- Low-speed, small, AWD vehicles
- Autonomous vehicles?



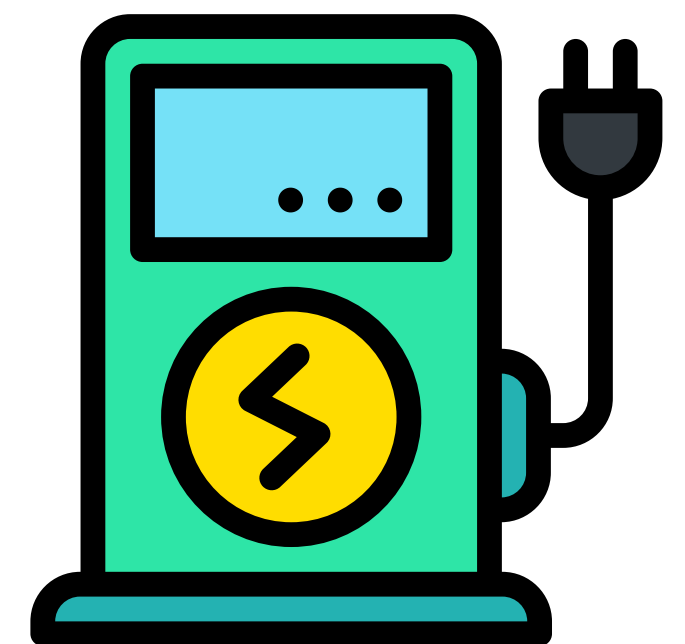
## Kootenay Bay Ferry

- Advocate for electrification
- Consider rerouting for efficiency



## Shuttle Services

- Castlegar airport to Kelowna, etc.
- Whitewater Ski Resort
- Spokane winter shuttles
- Volunteer driver programs



## Zero Emission Vehicle Support

- Coordinate charger/fuelling network
- Advocate/support ZEV purchases (commercial &/or residential)

# PLANNING & NETWORKS



## Focus on Equitable, Accessible Transportation

- Medical services shuttles (Arrow & Slokan Lake Community Services, Lower Kootenay Band Electric Health Shuttle)
- Senior support programs (Castlegar & District Community Service Society- volunteer driver program)
- Kootenay Employment Service Society (Salmo affordable Housing Transportation Study)
- Community Futures - Rural Ride Hailing Study



## Local Government Transportation Policy & Planning

- Municipal Active/Multi-Modal Transportation Plans
- Develop a Regional Transportation Service or Strategy, dedicate supports (\$, staff, etc.)
- Inter-regional collaboration (i.e. Carbon Neutral Kootenays, Accelerate Kootenays)
- Leverage opportunities to collaborate with regional organizations (Motl, BC Transit, etc.)
- Policy developments/updates to support active/low carbon transportation (i.e. bike parking, pathway connections, EV chargers, parking relaxations for carshare installs, etc.)

## Collaborative Working Group

- Collective funding applications
- Regular meetings
- Robust initiatives
- Intercommunity projects
- Diverse skillsets, capacities, perspectives
- Seek collaboration opportunities with regional organizations (Motl, BC Transit, etc.)
- Outreach & educational campaigns



## Multi-Modal Hubs

- Locate at key transportation nodes (i.e. community halls)
- Parking availability
- Nelson/regional Transit Service Hub



## Transportation Ecosystem Map

- Displays route/mode options
- Help ID gaps & nodes
- Support planning efforts



## Transportation Phone App

- Route information/planning
- Transit times
- Mode options