



HOUGHTON FIRE



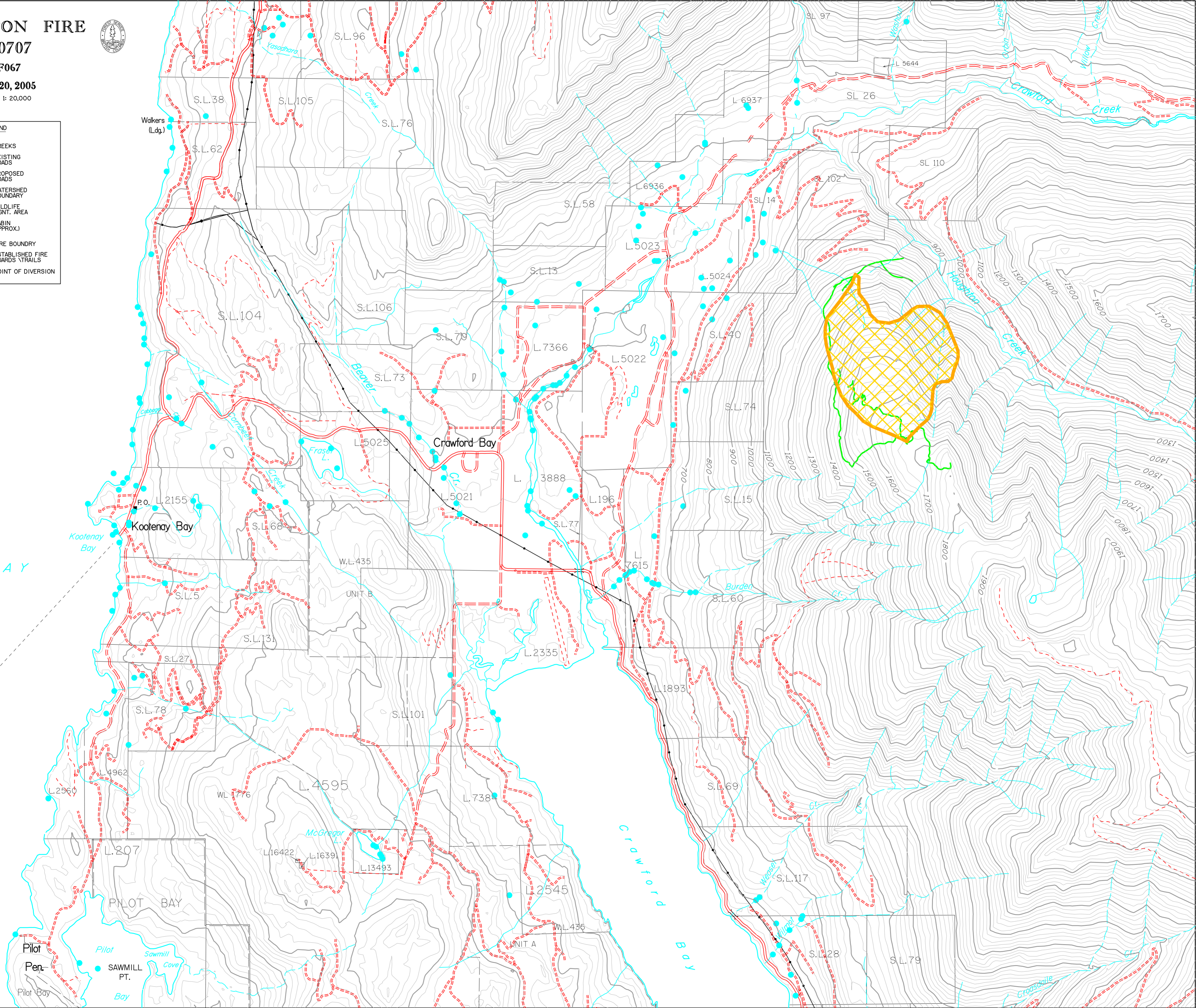
N70707

82F067

June 20, 2005

SCALE = 1: 20,000

LEGEND	
	CREEKS
	EXISTING ROADS
	PROPOSED ROADS
	WATERSHED BOUNDARY
	WILDLIFE MGMT. AREA
	CABIN (APPROX.)
	FIRE BOUNDARY
	ESTABLISHED FIRE GUARDS/TRAILS
	POINT OF DIVERSION



KOOTENAY

LAKE

Pilot Pen. Pilot Bay

PILOT BAY

Crawford Bay

CRAWFORD BAY

SL 97

SL 26

SL 110

S.L. 58

SL 14

S.L. 38

S.L. 105

S.L. 76

S.L. 62

S.L. 104

S.L. 106

S.L. 13

S.L. 79

S.L. 73

S.L. 74

Kootenay Bay

S.L. 68

L. 5021

L. 3888

L. 196

S.L. 15

S.L. 5

S.L. 131

L. 2335

S.L. 60

S.L. 78

S.L. 101

L. 738

S.L. 69

L. 2960

L. 207

L. 4595

L. 16422

L. 16391

L. 13493

L. 2545

L. 1893

S.L. 117

Pilot Sawmill Pt.

Sawmill Cove

UNIT A

S.L. 28

S.L. 79

Crowsdale