



Media Release

August 12, 2024
For immediate release
9:00 AM PST

Evacuation Order downgraded to an Evacuation Alert for remainder of properties due to Komonko Creek wildfire

Nelson, BC: On the recommendation of the BC Wildfire Service (BCWS), the Regional District of Central Kootenay (RDCK) Emergency Operations Centre (EOC) has downgraded the Evacuation Order for 43 properties and 31 parcel identifiers (PIDs) in Electoral Area H to an Evacuation Alert due to the Komonko Creek wildfire (formerly known as the Aylwin Creek Wildfire), part of the Slokan Lake Complex. The area includes properties from 3 km north of the Village of Slokan to Red Mountain Road. The Ministry of Transportation and Infrastructure has now opened Highway 6 completely; however, please drive with caution as crews are still working in the area. See a map and impacted addresses below.

ADDRESSES NOW ON EVACUATION ALERT (43):

8749	HIGHWAY 6	8942	HIGHWAY 6	9460	HIGHWAY 6
8751	HIGHWAY 6	8953	HIGHWAY 6	9465	HIGHWAY 6
8755	HIGHWAY 6	8961	HIGHWAY 6	9470	HIGHWAY 6
8760	HIGHWAY 6	9089	HIGHWAY 6	9480	HIGHWAY 6
8788	HIGHWAY 6	9150	HIGHWAY 6	9495	HIGHWAY 6
8821	HIGHWAY 6	9155	HIGHWAY 6	9501	HIGHWAY 6
8822	HIGHWAY 6	9185	HIGHWAY 6	9505	HIGHWAY 6
8851	HIGHWAY 6	9191	HIGHWAY 6 - 1	9510	HIGHWAY 6
8876	HIGHWAY 6	9191	HIGHWAY 6 - 4	9520	HIGHWAY 6
8905	HIGHWAY 6	9191	HIGHWAY 6 - 5	9530	HIGHWAY 6
8906	HIGHWAY 6	9195	HIGHWAY 6	9761	HIGHWAY 6
8909	HIGHWAY 6	9255	HIGHWAY 6	9788	HIGHWAY 6
8921	HIGHWAY 6	9301	HIGHWAY 6	9789	HIGHWAY 6
8926	HIGHWAY 6	9309	HIGHWAY 6		
8941	HIGHWAY 6	9315	HIGHWAY 6		

PIDs NOW ON EVACUATION ALERT (31):

007-538-278	011-818-191	014-661-641	018-045-901	028-810-040
009-167-544	011-818-204	014-869-721	027-022-277	028-810-066
009-167-552	011-818-221	016-717-333	027-656-039	028-810-074
009-234-900	011-818-263	016-800-915	027-656-047	
009-644-326	013-147-978	017-919-517	027-656-055	
011-818-131	013-787-527	017-919-525	027-656-063	
011-818-140	014-661-624	017-919-533	027-656-071	

Residents that have been downgraded to an Evacuation Alert are returning to a community where the surrounding area was affected by a wildfire. Unseen dangers may linger when returning to their homes and properties, ranging from gas leaks and weakened foundations to danger trees, and exposed wires and power lines. Using caution can help reduce potential injuries. When in doubt, consult an expert for help.

Burned forests have significant hazards. This will remain for years. The fire has left behind danger trees – those are trees which can fall without warning even without a wind, due to roots being burned out. As well, watch for ash pits and mark them for safety. Ash pits are holes full of hot ashes, created by burned trees and stumps. You can be seriously burned by falling into ash pits or landing in them with your hands or feet. Warn your family and neighbours to keep clear of the pits.

The RDCK advises all residents to read through the information in this [re-entry document](#) on what to do when you return home after a wildfire. For those residents who lost power for a significant period of time, they could be returning home to fridges and freezers full of spoiled food. Some homeowners may also find their fridges and freezers have stopped working, due to blown compressors as a result of power surges when power returns. The RDCK will be sending out information on spoiled food waste and fridge/freezer collection later today, but in the mean time [read this document](#) for more information on how to remove food and prepare your fridge or freezer, as well as instruction on how to minimize wildlife attraction.

As of August 3, the Aylwin Creek and Komonko Creek wildfires merged at Enterprise Creek and moving forward are referred under the Komonko Creek wildfire, part of the Slovan Lake Complex. The Slovan Lake Complex includes the Aylwin Creek wildfire, Komonko Creek wildfire, Mulvey Creek wildfire, Nemo Creek wildfire, and Ponderosa wildfire. A complex is created when multiple wildfires are managed by a single Incident Management Team, and resources and equipment are shared between all incidents in the complex.

The Komonko wildfire was first discovered on July 19 and the suspected cause is a lightning strike.

Updates or changes to the Evacuation Alert or Order will be provided via the [RDCK website](#), [Facebook](#), and [X](#) as more information becomes available. For details about evacuation and emergency preparedness, along with other resources, please visit www.rdck.ca/eocinfo. The RDCK EOC public inquiry line is 250.352.7701 or 1.866.522.7701 (toll free).

For up to date information on current wildfire activity, conditions and prohibitions, call 1.888.336.7378 or visit www.bcwildfire.ca.

For more information about evacuations and emergency preparedness, along with other resources:

- [Current RDCK Evacuation Alerts, Orders and Rescinds](#) or call 250.352.7701
- [Sign up for RDCK Emergency Notification System to receive notifications](#)
- [RDCK web map](#)
- [Public weather alerts for BC from Environment Canada](#)
- [BC Wildfire – Interactive Map of Current Events](#)
- [Fortis BC Outage Map](#) or call 1.866.436.7847
- [BC Hydro outage map](#) or call 1.800.224.9376
- [Nelson Hydro](#) 1.877.324.9376
- [Drive BC](#) for highway closures and road conditions
- [For BC Air Quality Health Index](#)
- [Prepared BC](#)

Incorporated in 1965, the Regional District of Central Kootenay (RDCK) is a local government that serves 60,000 residents in 11 electoral areas and nine member municipalities. The RDCK provides more than 160 services, including community facilities, fire protection and emergency services, grants, planning and land use, regional parks, resource recovery and handling, transit, water services and much more. For more information about the RDCK, visit www.rdck.ca.

-30-

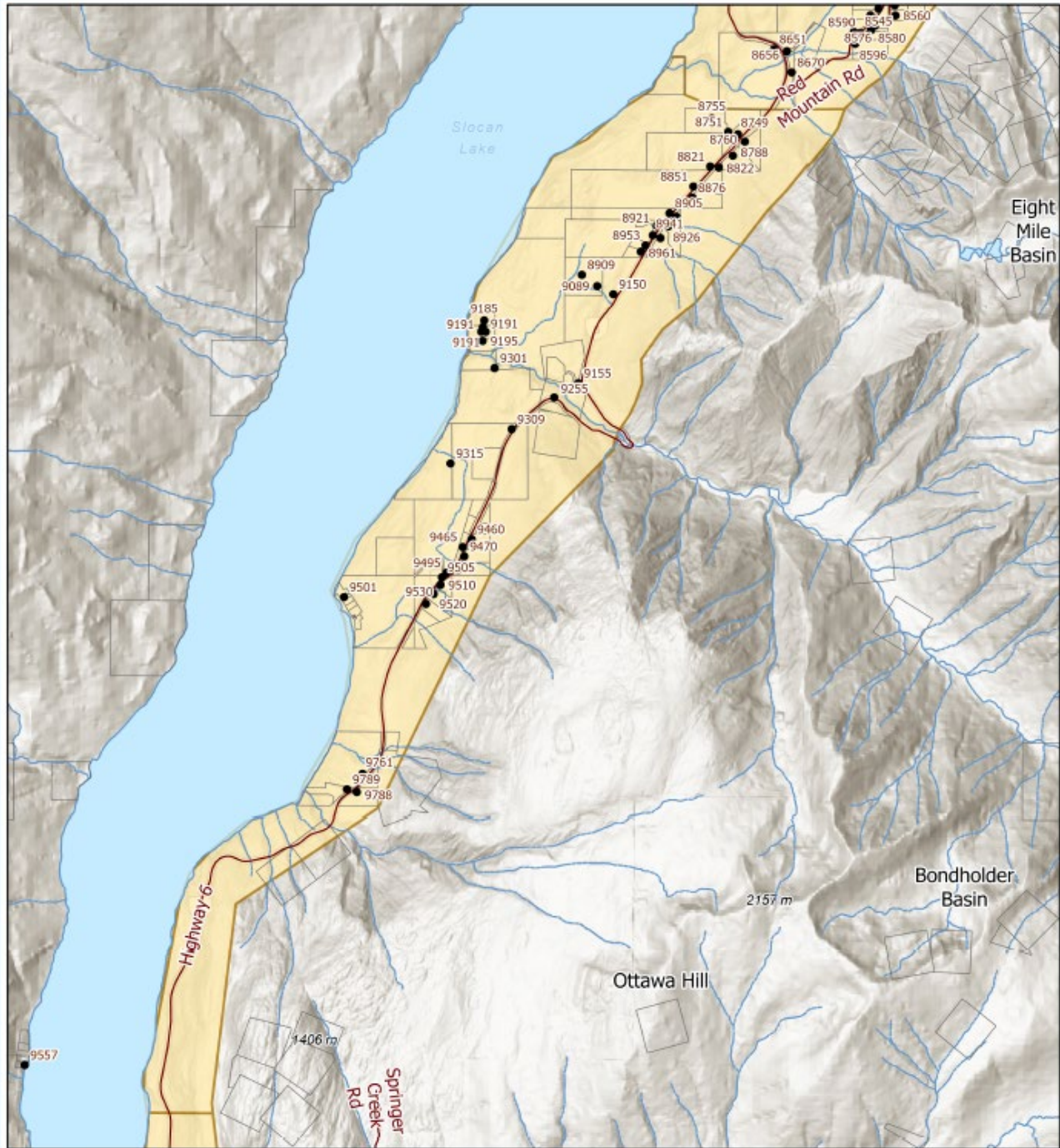
For further information, and media enquiries please contact:

EOC Information Officer

Regional District of Central Kootenay

Tel: 250.352.7701

Email: eocinfo@rdck.bc.ca



**REGIONAL DISTRICT OF
CENTRAL KOOTENAY
EMERGENCY
OPERATIONS CENTRE**

EOC Phone: 250-352-7701 or 1-866-522-7701

Current Emergency Information:

rdck.ca/EOCinfo

Register to receive emergency notifications:

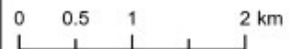
rdck.ca/notifications

To report a flood, landslide, spill or other hazards:
1-800-663-3456

Aylwin Creek Wildfire (Komonko Crk) Evacuation Order Rescind to Evacuation Alert

- Streets
- Addresses
- Legal Parcels
- Evacuation Alert

Map Scale: 1:54,126



The mapping information shown are approximate representations and should only be used for reference purposes. The Regional District of Central Kootenay is not responsible for any errors or omissions on this map.