



EMERGENCY OPERATIONS CENTRE

EVACUATION ALERT

Date: July 23, 2024

Time: 08:00hrs

An Evacuation Alert has been issued by the Village of Slocan.

The Ponderosa Wildfire (N51069) poses a potential danger to life and health. As a precautionary measure, an Evacuation Alert has been issued for the entire Village of Slocan, and includes the following 208 addresses (see attached map):

214 ARLINGTON RD	1119 ARTHUR ST	508 HAROLD ST	1104 HAROLD ST
304 ARLINGTON RD	303 DELANY AVE	509 HAROLD ST	1110 HAROLD ST
404 ARLINGTON RD	316 DELANY AVE	514 HAROLD ST	1111 HAROLD ST
416 ARLINGTON RD	407 DELANY AVE	519 HAROLD ST	1118 HAROLD ST
704 ARLINGTON RD	416 DELANY AVE	520 HAROLD ST	506 HUME ST
910 ARLINGTON RD	511 DELANY AVE	602 HAROLD ST	507 HUME ST
413 ARTHUR ST	610 DELANY AVE	608 HAROLD ST	518 HUME ST
414 ARTHUR ST	705 DELANY AVE	614 HAROLD ST	601 HUME ST
418 ARTHUR ST	807 DELANY AVE	617 HAROLD ST	607 HUME ST
501 ARTHUR ST	814 DELANY AVE	701 HAROLD ST	608 HUME ST
507 ARTHUR ST	815 DELANY AVE	706 HAROLD ST	611 HUME ST
515 ARTHUR ST	313 DICK AVE	707 HAROLD ST	612 HUME ST
516 ARTHUR ST	315 DICK AVE	710 HAROLD ST	617 HUME ST
517 ARTHUR ST	213 FITZ AVE	711 HAROLD ST	708 HUME ST
520 ARTHUR ST	305 FITZ AVE	717 HAROLD ST	709 HUME ST
609 ARTHUR ST	303 FLETCHER AVE	720 HAROLD ST	713 HUME ST
610 ARTHUR ST	315 FLETCHER AVE	801 HAROLD ST	714 HUME ST
615 ARTHUR ST	409 FLETCHER AVE	804 HAROLD ST	809 HUME ST
619 ARTHUR ST	512 FLETCHER AVE	811 HAROLD ST	810 HUME ST
703 ARTHUR ST	515 FLETCHER AVE	812 HAROLD ST	817 HUME ST
709 ARTHUR ST	602 FLETCHER AVE	915 HAROLD ST	903 HUME ST
714 ARTHUR ST	603 FLETCHER AVE	1001 HAROLD ST	1003 HUME ST
715 ARTHUR ST	612 FLETCHER AVE	1004 HAROLD ST	1004 HUME ST
812 ARTHUR ST	703 GIFFIN AVE	1007 HAROLD ST	1012 HUME ST
816 ARTHUR ST	501 HAROLD ST	1018 HAROLD ST	1017 HUME ST
817 ARTHUR ST	502 HAROLD ST	1019 HAROLD ST	1018 HUME ST
1109 ARTHUR ST	505 HAROLD ST	1101 HAROLD ST	1103 HUME ST

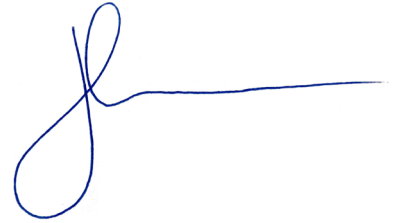
1104 HUME ST	1003 MAIN ST	412 SLOCAN ST	609 SPRINGER ST
1111 HUME ST	1006 MAIN ST	418 SLOCAN ST	610 SPRINGER ST
1112 HUME ST	1011 MAIN ST	503 SLOCAN ST	611 SPRINGER ST
410 MAIN ST	1012 MAIN ST	508 SLOCAN ST	615 SPRINGER ST
411 MAIN ST	1015 MAIN ST	509 SLOCAN ST	618 SPRINGER ST
417 MAIN ST	1018 MAIN ST	514 SLOCAN ST	705 SPRINGER ST
503 MAIN ST	1109 MAIN ST	602 SLOCAN ST	706 SPRINGER ST
510 MAIN ST	1113 MAIN ST	603 SLOCAN ST	709 SPRINGER ST
515 MAIN ST	1114 MAIN ST	611 SLOCAN ST	716 SPRINGER ST
519 MAIN ST	803 NELSON ST	619 SLOCAN ST	719 SPRINGER ST
603 MAIN ST	804 NELSON ST	809 SLOCAN ST	1006 SPRINGER ST
604 MAIN ST	808 NELSON ST	912 SLOCAN ST	1009 SPRINGER ST
607 MAIN ST	810 NELSON ST	1003 SLOCAN ST	1010 SPRINGER ST
612 MAIN ST	818 NELSON ST	1009 SLOCAN ST	1015 SPRINGER ST
613 MAIN ST	1003 NELSON ST	1013 SLOCAN ST	1016 SPRINGER ST
702 MAIN ST	1010 NELSON ST	1102 SLOCAN ST	1019 SPRINGER ST
708 MAIN ST	1011 NELSON ST	1112 SLOCAN ST	1020 SPRINGER ST
714 MAIN ST	1015 NELSON ST	412 SPRINGER ST	1103 SPRINGER ST
718 MAIN ST	1016 NELSON ST	416 SPRINGER ST	1104 SPRINGER ST
812 MAIN ST	1101 NELSON ST	502 SPRINGER ST	1109 SPRINGER ST
907 MAIN ST	507 PARK AVE	505 SPRINGER ST	1112 SPRINGER ST
910 MAIN ST	614 PARK AVE	509 SPRINGER ST	315 WARD AVE
911 MAIN ST	806 PARK AVE	512 SPRINGER ST	403 WARD AVE
917 MAIN ST	1114 RIVER ST	515 SPRINGER ST	516 WARD AVE
918 MAIN ST	320 SLOCAN ST	520 SPRINGER ST	916 WARD AVE

An Evacuation Alert has been issued to prepare you to evacuate your premises or property should it be found necessary. Residents will be given as much advance notice as possible prior to evacuation; however you may receive limited notice due to changing conditions.

WHAT YOU SHOULD DO TO PREPARE UNDER AN EVACUATION ALERT

- Sign up to the RDCK Emergency Notification System. Go to www.rdck.ca/notification
- Locate all family members and designate a meeting area outside the evacuation area, should an Evacuation Order be called while separated.
- Pack a grab and go bag and include essential items such as government-issued ID, medications, eyeglasses, valuable papers (e.g. insurance, credit, and mortgage information), immediate care needs for dependents and, if time and space permits, keepsakes for quick departure.
- Register online with Emergency Support Services <https://ess.gov.bc.ca>. Create a profile in the event you are put on Evacuation Order.
- Prepare to move disabled persons, children and/or neighbours, if assistance is needed.
- Prepare to take pets with you and move livestock to a safe area (if possible). Prepare leashes, pet carriers and food.

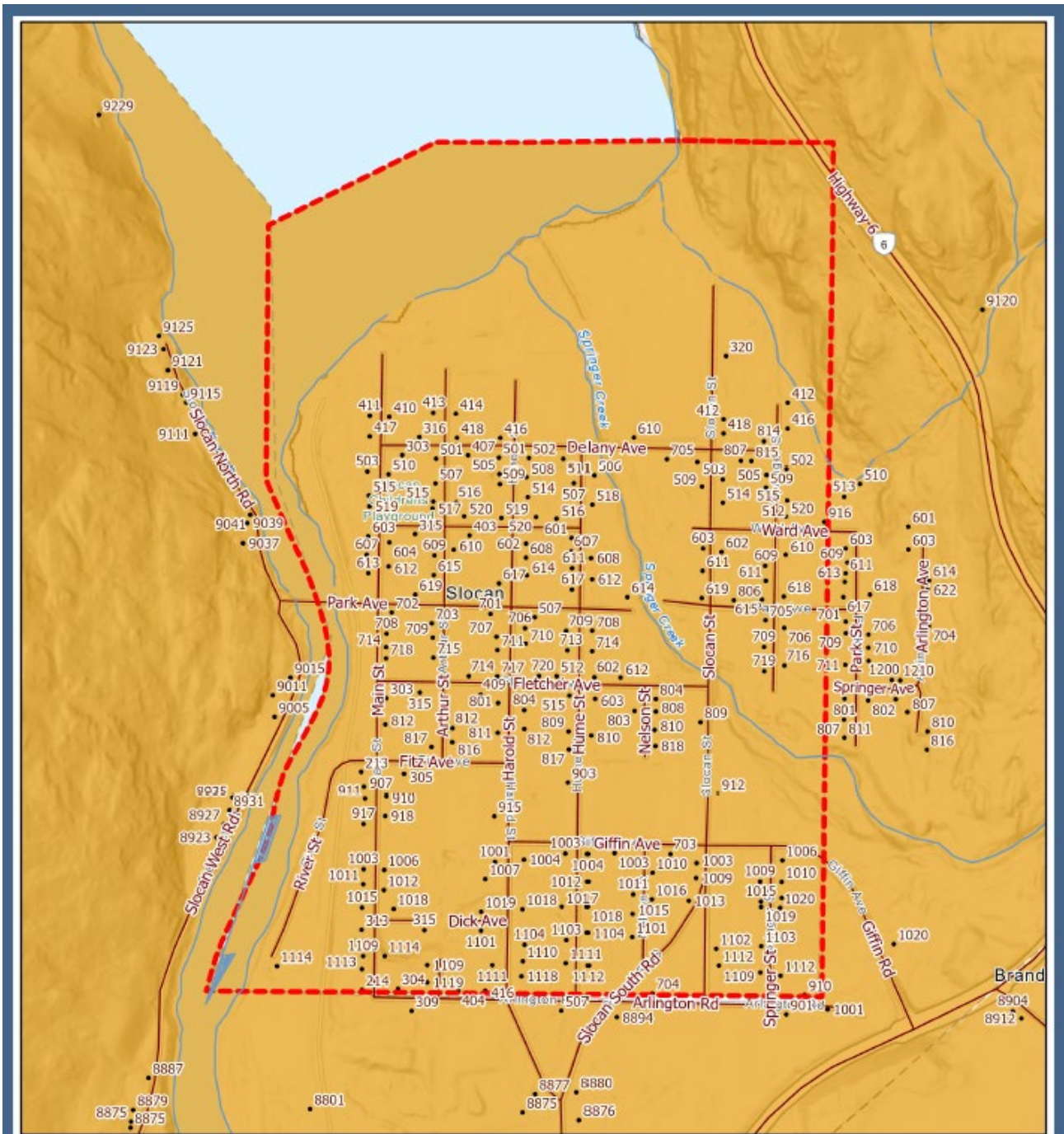
- Arrange transportation for all your household members. Fill the gas tanks of personal vehicles. If transportation assistance is needed, call 250.352.7701 or 1.866.522.7701 (toll free).
- Arrange accommodation for all members of the residence, if possible. In the event of an Evacuation Order, Reception Centres will be opened if required.
- Further information will be issued should the situation change. Please visit www.rdck.ca/EOCinfo for information or call the RDCK Emergency Operation Centre: 250.352.7701 or 1.866.522.7701 (toll free).



Jessica Lunn
Mayor, Village of Slocan

July 23, 2024

Date



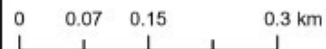
**REGIONAL DISTRICT OF
CENTRAL KOOTENAY
EMERGENCY
OPERATIONS CENTRE**

EOC Phone: 250-352-7701 or 1-866-522-7701
 Current Emergency Information:
rdck.ca/EOCinfo
 Register to receive emergency notifications:
rdck.ca/notifications
 To report a flood, landslide, spill or other hazards:
 1-800-663-3456

Village of Slocan Ponderosa Wildfire Evacuation Alert

- Evacuation Alert
- Streets
- Addresses
- Municipal Boundary

Map Scale: 1:7,000



The mapping information shown are approximate representations and should only be used for reference purposes. The Regional District of Central Kootenay is not responsible for any errors or omissions on this map.