

Raspberry School – Statement of Significance

April 2, 2019

Description of Historic Place

Raspberry School is a Doukhobor style building located in Raspberry, an unincorporated settlement in the Greater Castlegar, British Columbia area. The historic place is confined to the exterior building footprint.

Heritage Values of Historic Place

The heritage value of the Raspberry School is significant as one of the last surviving examples of Doukhobor cooperative building construction in the Greater Castlegar area.

The Raspberry School is a long narrow brick building. It has a wrap-around elevated deck with white tapered columns and a sweeping continuous hip roofline. It is an imposing structure built on a glacial bench overlooking the Columbia River.

The Raspberry School building has an identical twin at Fructova in Grand Forks. Typical of Doukhobor construction of the time, the same building plan was used several times for similar purposes. Glade was another identical school that was built in 1929 by the Doukhobor society. All had classrooms on either end and a four room teacherage in the middle.



Brick for the Raspberry School was manufactured at the local brick factory.

The structure is built into the natural contour of the sloping hillside. Two sets of matching stairways lead to the second-floor entrance of the stately building.

The building's prominent corner location on a major thoroughfare to the town centre makes the Raspberry School a highly visible landmark.




Character-Defining Elements

The character-defining elements of Raspberry School include:

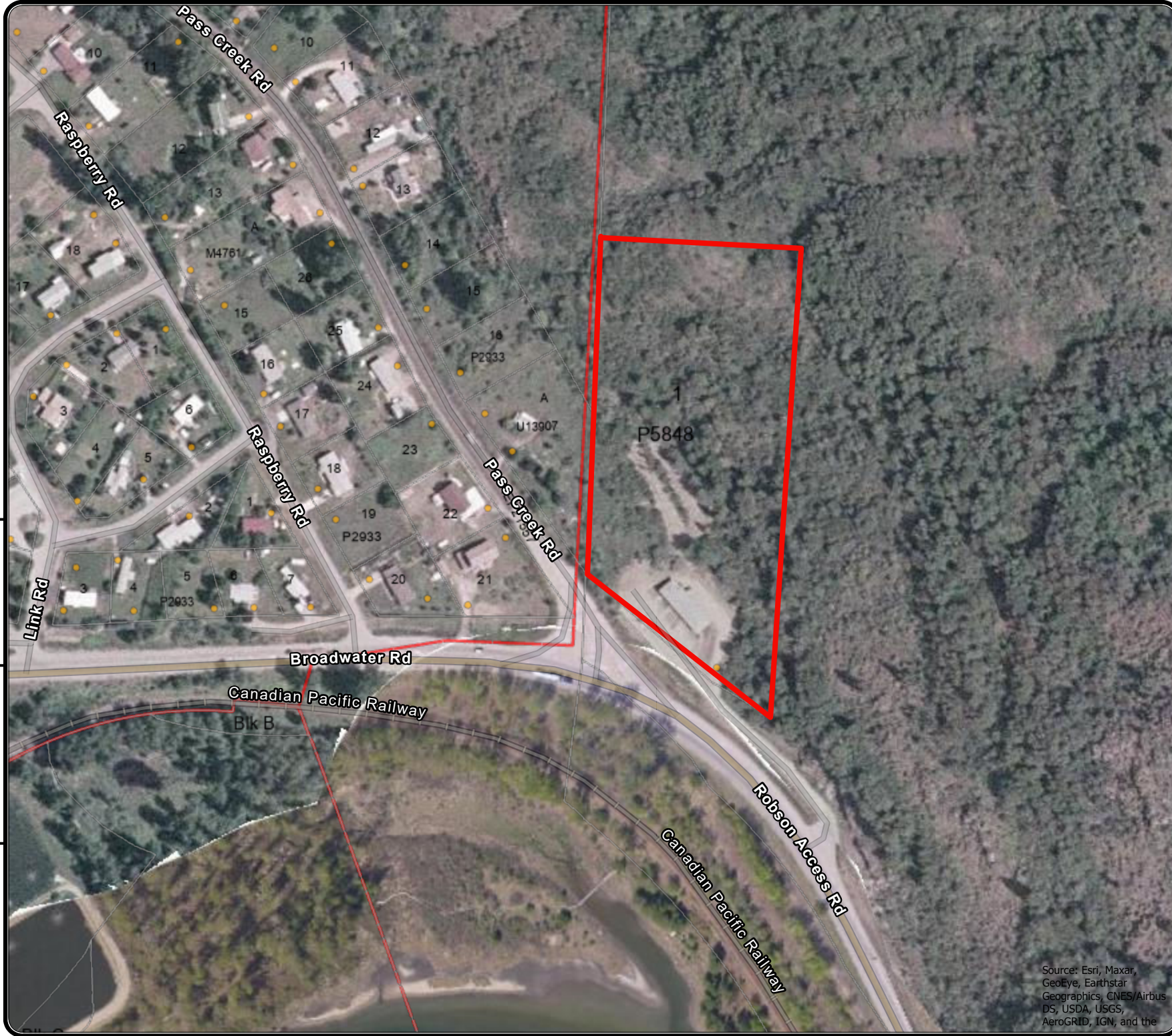
- Its location on a rise overlooking a major road toward the river
- The building's natural projection from the hillside
- Its wrap around deck with tapered columns to the continuous span hip roof
- Two large 2nd floor entrance staircases
- Barrel vault single paned windows trimmed in white
- Doukhobor style construction with community manufactured brick and white façade trim



Legend

-  Electoral Areas
-  Cadastre
-  Civic Address

Raspberry School



Map Scale:

1:4,514



Date:
July 30, 2020

REGIONAL DISTRICT
OF CENTRAL KOOTENAY
Box 590, 202 Lakeside Drive,
Nelson, BC V1L 5R4
Phone: 1-800-268-7325
www.rdck.bc.ca
maps@rdck.bc.ca

The mapping information
shown are approximate
representations and should
be used for reference
purposes only.

The Regional District of
Central Kootenay is not
responsible for any errors or
omissions on this map.

Source: Esri, Maxar,
GeoEye, Earthstar
Geographics, CNES/Airbus
DS, USDA, USGS,
AeroGRID, IGN, and the