

Idaho Peak Recreation Site – Statement of Significance

March 7, 2020

Description of Historic Place

Idaho Peak Recreation Site is a subalpine meadow with hiking trails located southeast of New Denver in the Selkirk Mountain Range. Key features of this site include a blanket of summer-blooming subalpine flowers, and a fire lookout station.

Heritage Values of Historic Place

This historic place is valued as a significant local recreation site. Local region residents and tourists alike flock to this place each summer to take in the natural beauty and unique outdoor experience it offers. With its vibrant display of summer-blooming subalpine flowers, Idaho Peak Recreation Site presents a unique ecological vista to visitors who come for a day hike, or a camping experience. For decades this place has been an icon of the West Kootenay, with images of it used in promotional materials and artistic works promoting the vast natural beauty of the area.



This historic place also has an important connection to the British Columbia Forest Service in the fire lookout present at the apex of Idaho Peak. Situated on the land and designed to maximize the fire lookout's 360-degree views of the surrounding landscape, this building is important because it demonstrates how wildfire control was facilitated prior to the introduction of today's modern technologies. It also reflects the way of life for fire lookouts who were stationed at these sites during the summer months, tasked with monitoring the landscape for any sign of fire. The Idaho Peak Lookout is a good representation of the fire lookouts of the 1940s-60s, with a concrete block foundation, square

massing, and a flat roof. Idaho Peak Lookout illustrates the evolution of design and materials of fire lookouts at this time period.



Idaho Peak is also valued as a remnant industrial landscape, left over from the mining boom days of the late nineteenth and early twentieth centuries. At one time a central location to mines such as the Idaho, the Alamo, and the Queen Bess, this place holds evidence of the rich geology and natural-resource based economy that drove the boom of villages, towns, and cities in the West Kootenay.








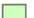
Character-Defining Elements

The character-defining elements of the Idaho Lookout Recreation Site include:

- Its location on Idaho Peak, with commanding 360 degree views from the fire lookout.
- Unimpeded views of Slocan Lake, New Denver, and the surrounding mountainous landscape all the way to the horizon.
- The unique geology of the land, which contributed to the development of the site as a mining landscape.
- Subalpine meadow filled with a wide range of summer-blooming flowers.
- Evidence of the remnant mining landscape, including tailings piles, adits, and trails.
- Its relationship to nearby past and present townsites such as New Denver, Sandon, and Three Forks.
- The routes of the two access trails that converge into one trail to access the fire lookout.
- Accessibility by car on the fire service road.
- Relationship of the site to the Idaho Peak Forest Service Road.
- Presence of the Idaho Fire Lookout tower on the highest point of land, with its square, vertical massing, wood and concrete construction materials, flat roof, and 360-degree views from inside. The wrap-around balcony, exterior staircase, and basement access door are also features relevant to its historical use.

Idaho Peak Recreation Site

Legend

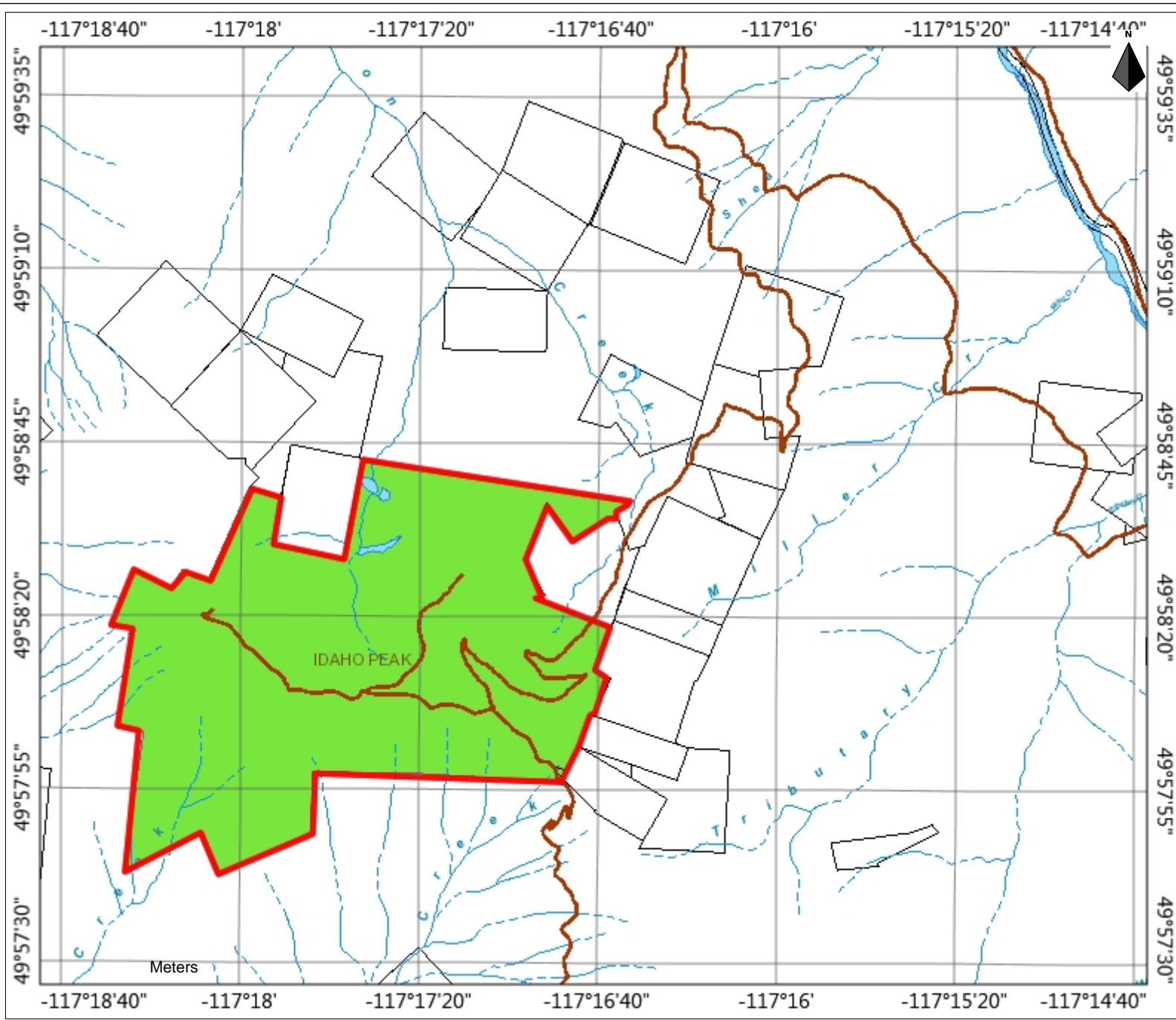
-  Address Range
-  Streams (Large Scale)
-  Cadastre
-  Lakes (Mid Scale)
- ParksAndTenures**
-  Other
-  Park
-  Recreation Site or Reserve
-  Wildlife Management Area

Notes

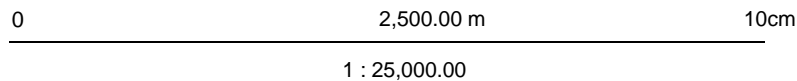
Map Details



202 Lakeside Drive
Nelson, BC
1-800-268-7325
<http://www.rdck.ca>



Meters



Date Plotted: 5/4/2020

This product is for informational purposes and may not have been prepared for, or be suitable for legal, engineering, or surveying purposes. Users of this information should review or consult the primary data and information sources to ascertain the usability of the information.