



**ELECTORAL AREA 'F'  
BYLAW NO. 2225, 2011  
A BYLAW TO AMEND  
REGIONAL DISTRICT OF  
CENTRAL KOOTENAY  
ZONING BYLAW NO. 1675, 2004**

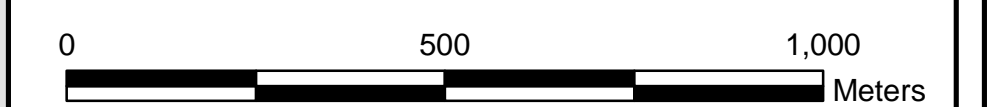
**LEGEND**

- Electoral Area
- Outside Bylaw Area
- Bylaw No. 2225 Area
- Kootenay Lake

**ZONING DESIGNATIONS**

- R1F - Suburban Residential F
- R2 - Country Residential
- R3 - Rural Residential
- R5 - Manufactured Home Park
- R6 - Multi Unit Residential
- R6F - High Density Residential
- C1 - Neighborhood Commercial
- C2 - General Commercial
- C3 - Tourist Commercial
- I - Institutional
- M2 - Medium Industrial
- OS - Open Space
- PR - Park and Recreation
- Q - Quarry

Map Projection: UTM Zone 11  
Map Datum: NAD83 Scale: 1:10000  
Plotted: October 2011 (Final Bylaw)

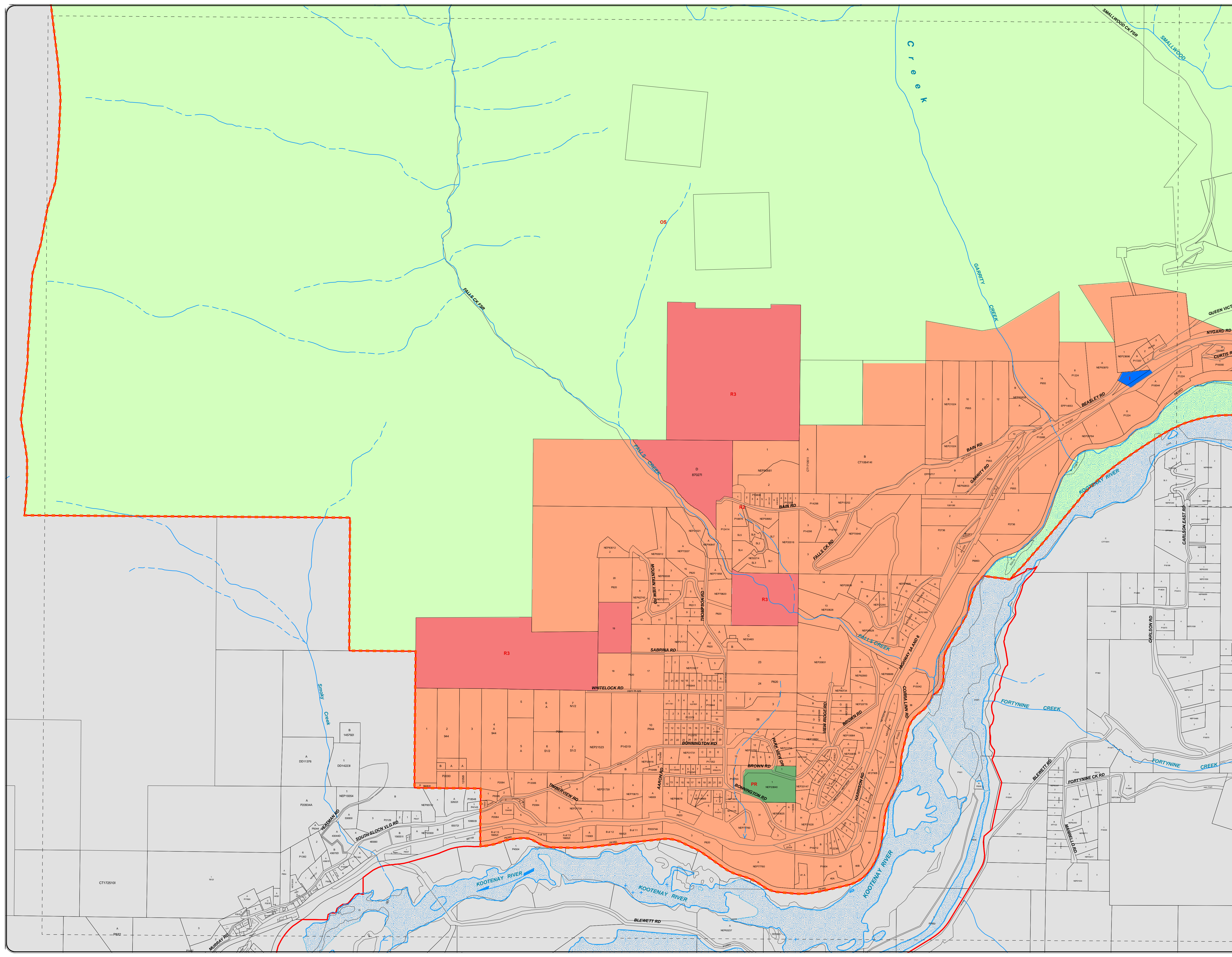


**CAVEAT**

The boundaries of the Zoning Designations listed in this bylaw together with explanatory legends, notations, or references in respect thereof, are delineated and described on the Zoning Map. The Zoning Map consists of the computer record compiled by means of a geographic information system. The Zoning Map is kept in the Office of the Secretary at the Regional District Office. The Zoning Map forms part of this bylaw. A generalized diagrammatic representation of the Zoning Map is annexed to this bylaw as Schedule E.

The Zoning Map forming part of this bylaw is at a scale that provides clear and more detailed information than the generalized diagrammatic representation shown on Schedule 'E' of Bylaw No. 2225. In the event of a conflict or inconsistency between Schedule 'E' and the Zoning Map, and in the event that the Zoning Map shows and provides more information than Schedule 'E', then in all such cases the Zoning Map shall govern.

**SCHEDULE E  
ZONING DESIGNATIONS  
MAP 1 OF 5**







**ELECTORAL AREA 'F'**  
**BYLAW NO. 2225, 2011**  
**A BYLAW TO AMEND**  
**REGIONAL DISTRICT OF**  
**CENTRAL KOOTENAY**  
**ZONING BYLAW NO. 1675, 2004**

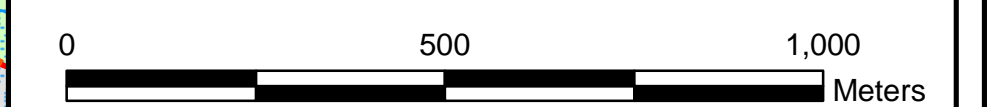
**LEGEND**

- Electoral Area
- Outside Bylaw Area
- Bylaw No. 2225 Area
- Kootenay Lake

**ZONING DESIGNATIONS**

- R1F - Suburban Residential F
- R2 - Country Residential
- R3 - Rural Residential
- R5 - Manufactured Home Park
- R6 - Multi Unit Residential
- R6F - High Density Residential
- C1 - Neighborhood Commercial
- C2 - General Commercial
- C3 - Tourist Commercial
- I - Institutional
- M2 - Medium Industrial
- OS - Open Space
- PR - Park and Recreation
- Q - Quarry

Map Projection: UTM Zone 11  
 Map Datum: NAD83 Scale: 1:10000  
 Plotted: October 2011 (Final Bylaw)

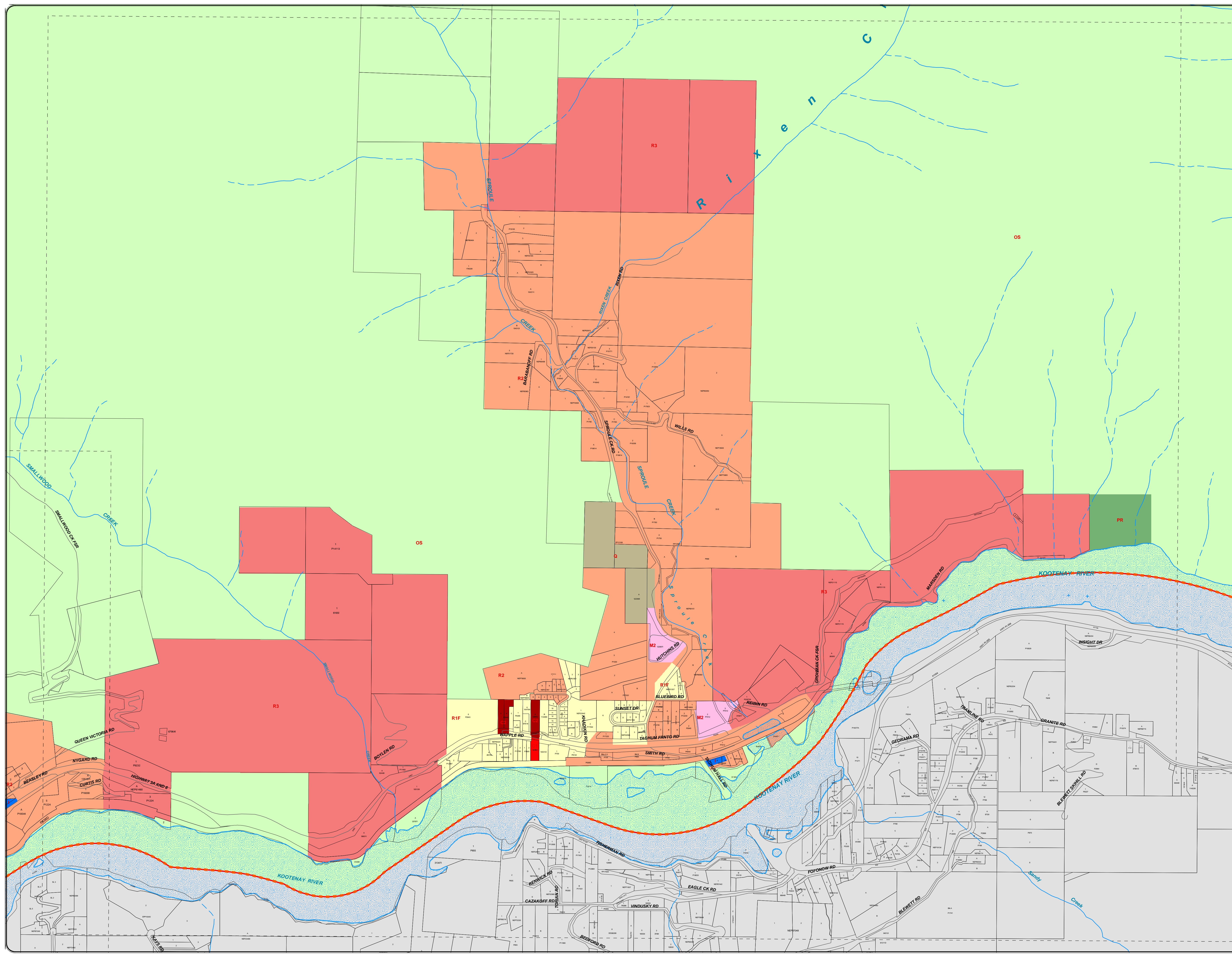


**CAVEAT**

The boundaries of the Zoning Designations listed in this bylaw together with explanatory legends, notations, or references in respect thereof, are delineated and described on the Zoning Map. The Zoning Map consists of the computer record compiled by means of a geographic information system. The Zoning Map is kept in the Office of the Secretary at the Regional District Office. The Zoning Map forms part of this bylaw. A generalized diagrammatic representation of the Zoning Map is annexed to this bylaw as Schedule E.

The Zoning Map forming part of this bylaw is at a scale that provides clear and more detailed information than the generalized diagrammatic representation shown on Schedule 'E' of Bylaw No. 2225. In the event of a conflict or inconsistency between Schedule 'E' and the Zoning Map, and in the event that the Zoning Map shows and provides more information than Schedule 'E', then in all such cases the Zoning Map shall govern.

**SCHEDULE E**  
**ZONING DESIGNATIONS**  
**MAP 2 OF 5**







**ELECTORAL AREA 'F'**  
**BYLAW NO. 2225, 2011**  
**A BYLAW TO AMEND**  
**REGIONAL DISTRICT OF**  
**CENTRAL KOOTENAY**  
**ZONING BYLAW NO. 1675, 2004**

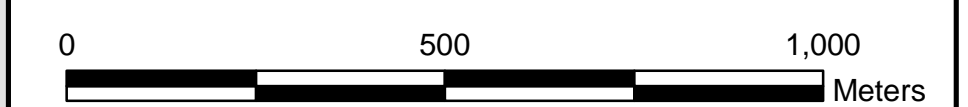
**LEGEND**

- Electoral Area
- Outside Bylaw Area
- Bylaw No. 2225 Area
- Kootenay Lake

**ZONING DESIGNATIONS**

- R1F - Suburban Residential F
- R2 - Country Residential
- R3 - Rural Residential
- R5 - Manufactured Home Park
- R6 - Multi Unit Residential
- R6F - High Density Residential
- C1 - Neighborhood Commercial
- C2 - General Commercial
- C3 - Tourist Commercial
- I - Institutional
- M2 - Medium Industrial
- OS - Open Space
- PR - Park and Recreation
- Q - Quarry

Map Projection: UTM Zone 11  
 Map Datum: NAD83 Scale: 1:10000  
 Plotted: October 2011 (Final Bylaw)

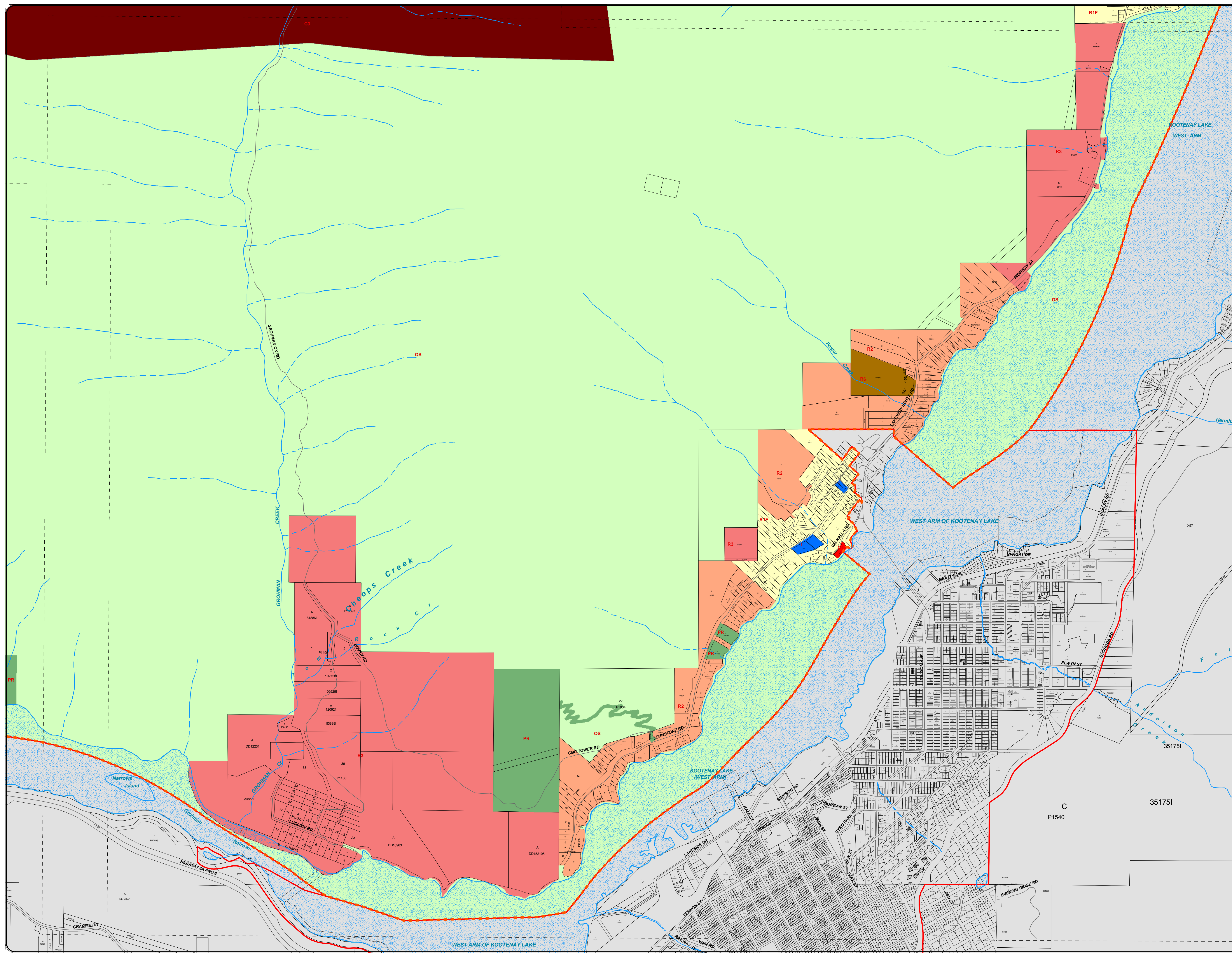


**CAVEAT**

The boundaries of the Zoning Designations listed in this bylaw together with explanatory legends, notations, or references in respect thereof, are delineated and described on the Zoning Map. The Zoning Map consists of the computer record compiled by means of a geographic information system. The Zoning Map is kept in the Office of the Secretary at the Regional District Office. The Zoning Map forms part of this bylaw. A generalized diagrammatic representation of the Zoning Map is annexed to this bylaw as Schedule E.

The Zoning Map forming part of this bylaw is at a scale that provides clear and more detailed information than the generalized diagrammatic representation shown on Schedule 'E' of Bylaw No. 2225. In the event of a conflict or inconsistency between Schedule 'E' and the Zoning Map, and in the event that the Zoning Map shows and provides more information than Schedule 'E', then in all such cases the Zoning Map shall govern.

**SCHEDULE E**  
**ZONING DESIGNATIONS**  
**MAP 3 OF 5**







**ELECTORAL AREA 'F'  
BYLAW NO. 2225, 2011  
A BYLAW TO AMEND  
REGIONAL DISTRICT OF  
CENTRAL KOOTENAY  
ZONING BYLAW NO. 1675, 2004**

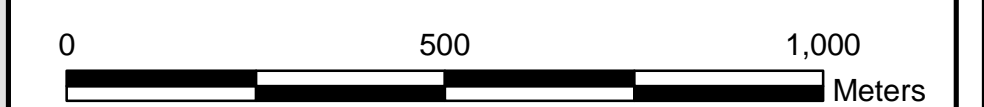
**LEGEND**

- Electoral Area
- Outside Bylaw Area
- Bylaw No. 2225 Area
- Kootenay Lake

**ZONING DESIGNATIONS**

- R1F - Suburban Residential F
- R2 - Country Residential
- R3 - Rural Residential
- R5 - Manufactured Home Park
- R6 - Multi Unit Residential
- R6F - High Density Residential
- C1 - Neighborhood Commercial
- C2 - General Commercial
- C3 - Tourist Commercial
- I - Institutional
- M2 - Medium Industrial
- OS - Open Space
- PR - Park and Recreation
- Q - Quarry

Map Projection: UTM Zone 11  
Map Datum: NAD83 Scale: 1:10000  
Plotted: October 2011 (Final Bylaw)

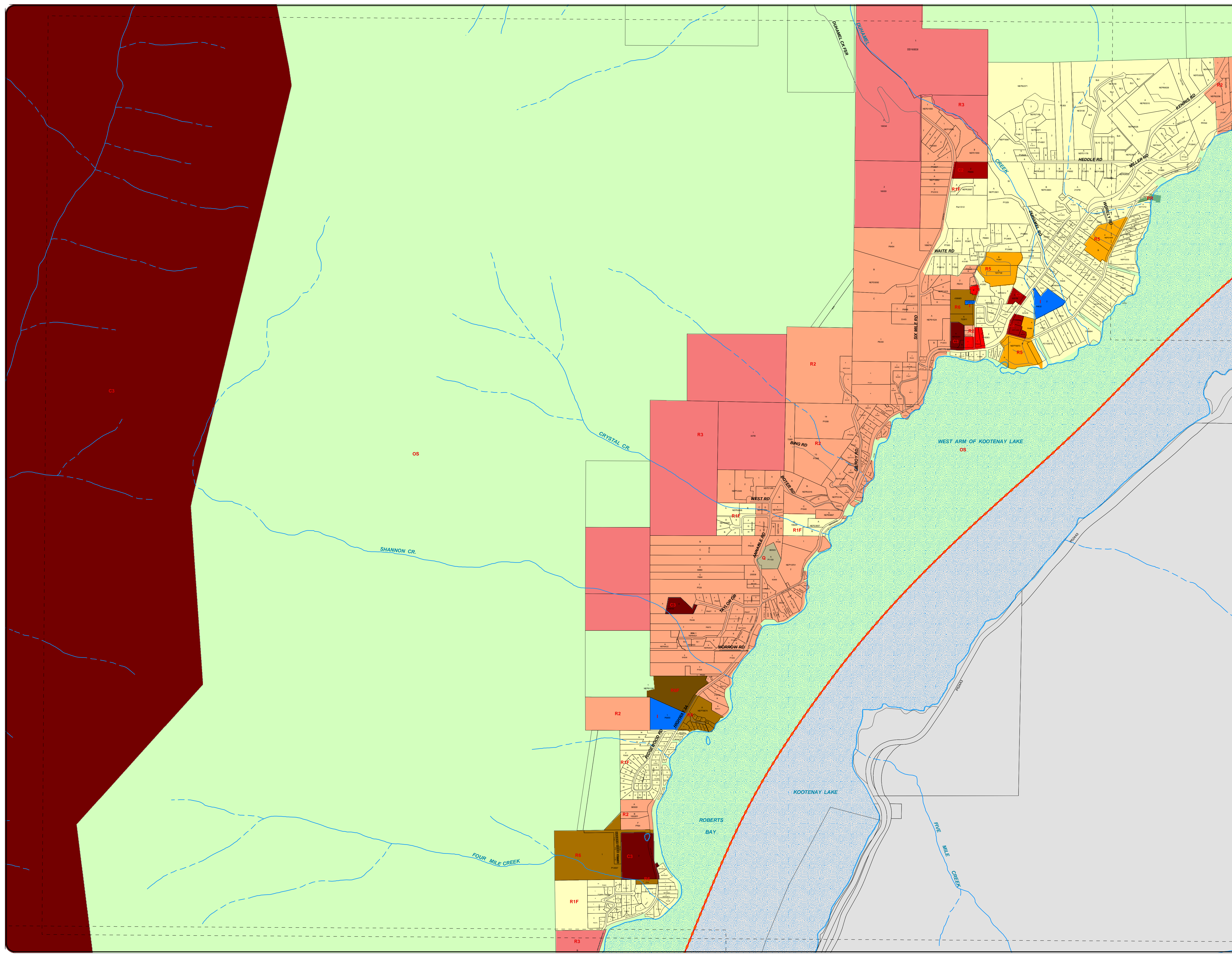


**CAVEAT**

The boundaries of the Zoning Designations listed in this bylaw together with explanatory legends, notations, or references in respect thereof, are delineated and described on the Zoning Map. The Zoning Map consists of the computer record compiled by means of a geographic information system. The Zoning Map is kept in the Office of the Secretary at the Regional District Office. The Zoning Map forms part of this bylaw. A generalized diagrammatic representation of the Zoning Map is annexed to this bylaw as Schedule E.

The Zoning Map forming part of this bylaw is at a scale that provides clear and more detailed information than the generalized diagrammatic representation shown on Schedule 'E' of Bylaw No. 2225. In the event of a conflict or inconsistency between Schedule 'E' and the Zoning Map, and in the event that the Zoning Map shows and provides more information than Schedule 'E', then in all such cases the Zoning Map shall govern.

**SCHEDULE E  
ZONING DESIGNATIONS  
MAP 4 OF 5**







**ELECTORAL AREA 'F'**  
**BYLAW NO. 2225, 2011**  
**A BYLAW TO AMEND**  
**REGIONAL DISTRICT OF**  
**CENTRAL KOOTENAY**  
**ZONING BYLAW NO. 1675, 2004**

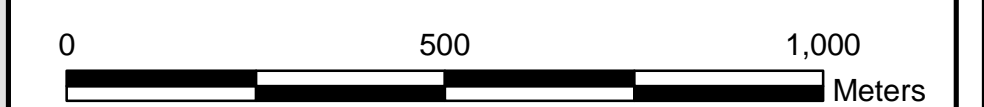
**LEGEND**

- Electoral Area
- Outside Bylaw Area
- Bylaw No. 2225 Area
- Kootenay Lake

**ZONING DESIGNATIONS**

- R1F - Suburban Residential F
- R2 - Country Residential
- R3 - Rural Residential
- R5 - Manufactured Home Park
- R6 - Multi Unit Residential
- R6F - High Density Residential
- C1 - Neighborhood Commercial
- C2 - General Commercial
- C3 - Tourist Commercial
- I - Institutional
- M2 - Medium Industrial
- OS - Open Space
- PR - Park and Recreation
- Q - Quarry

Map Projection: UTM Zone 11  
 Map Datum: NAD83 Scale: 1:10000  
 Plotted: October 2011 (Final Bylaw)

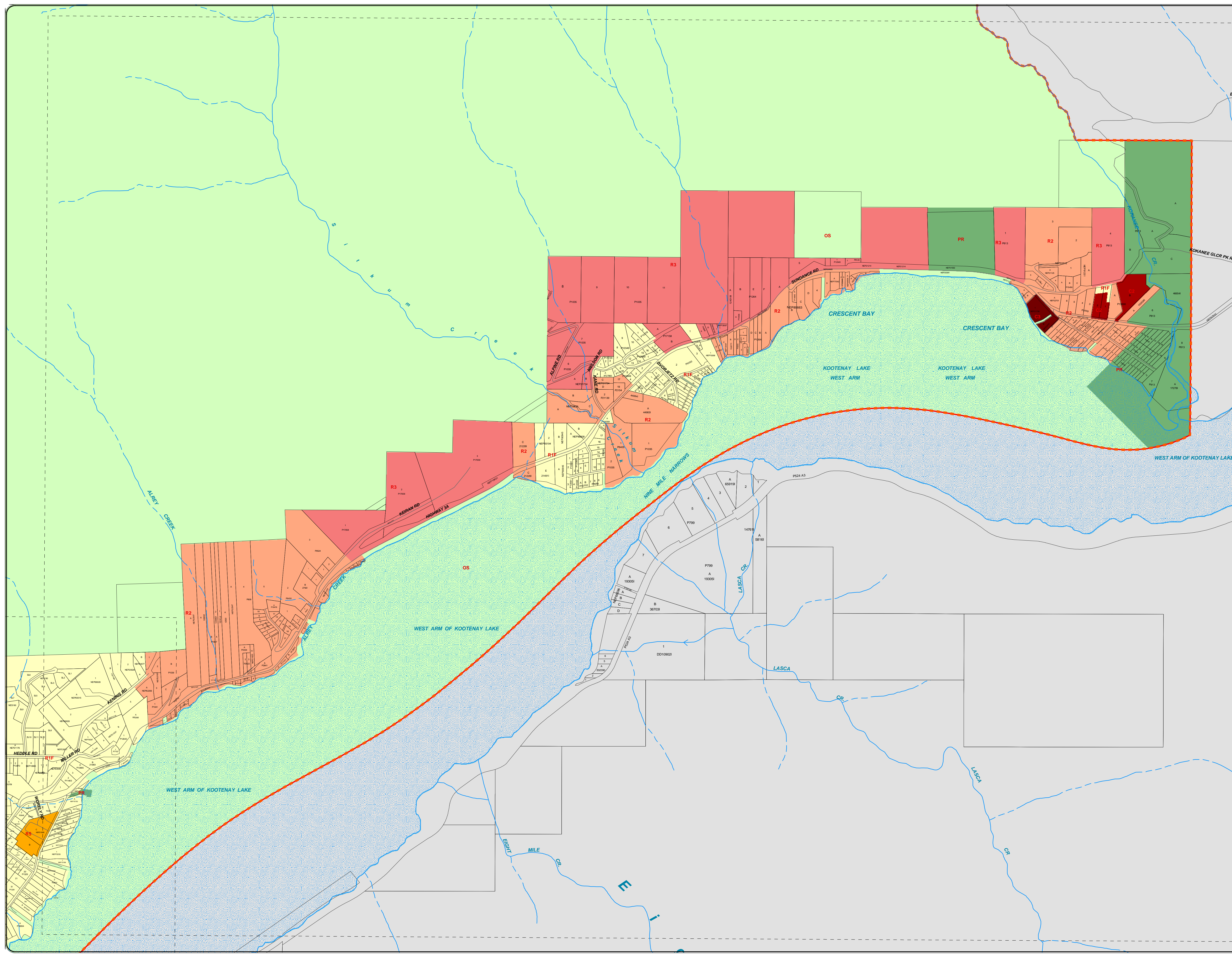


**CAVEAT**

The boundaries of the Zoning Designations listed in this bylaw together with explanatory legends, notations, or references in respect thereof, are delineated and described on the Zoning Map. The Zoning Map consists of the computer record compiled by means of a geographic information system. The Zoning Map is kept in the Office of the Secretary at the Regional District Office. The Zoning Map forms part of this bylaw. A generalized diagrammatic representation of the Zoning Map is annexed to this bylaw as Schedule E.

The Zoning Map forming part of this bylaw is at a scale that provides clear and more detailed information than the generalized diagrammatic representation shown on Schedule 'E' of Bylaw No. 2225. In the event of a conflict or inconsistency between Schedule 'E' and the Zoning Map, and in the event that the Zoning Map shows and provides more information than Schedule 'E', then in all such cases the Zoning Map shall govern.

**SCHEDULE E**  
**ZONING DESIGNATIONS**  
**MAP 5 OF 5**







**ELECTORAL AREA 'F'  
BYLAW NO. 2225, 2011  
A BYLAW TO AMEND  
REGIONAL DISTRICT OF  
CENTRAL KOOTENAY  
ZONING BYLAW NO. 1675, 2004**

**LEGEND**

- Electoral Area
- Outside Bylaw Area
- Bylaw No. 2225 Area
- Kootenay Lake

**ZONING DESIGNATIONS**

- R1F - Suburban Residential F
- R2 - Country Residential
- R3 - Rural Residential
- R5 - Manufactured Home Park
- R6 - Multi Unit Residential
- R6F - High Density Residential
- C1 - Neighborhood Commercial
- C2 - General Commercial
- C3 - Tourist Commercial
- I - Institutional
- M2 - Medium Industrial
- OS - Open Space
- PR - Park and Recreation
- Q - Quarry

Map Projection: UTM Zone 11  
Map Datum: NAD83 Scale: 1:60000  
Plotted: October 2011 (Final Bylaw)

**CAVEAT**

The boundaries of the Zoning Designations listed in this bylaw together with explanatory legends, notations, or references in respect thereof, are delineated and described on the Zoning Map. The Zoning Map consists of the computer record compiled by means of a geographic information system. The Zoning Map is kept in the Office of the Secretary at the Regional District Office. The Zoning Map forms part of this bylaw. A generalized diagrammatic representation of the Zoning Map is annexed to this bylaw as Schedule E.

The Zoning Map forming part of this bylaw is at a scale that provides clear and more detailed information than the generalized diagrammatic representation shown on Schedule 'E' of Bylaw No. 2225. In the event of a conflict or inconsistency between Schedule 'E' and the Zoning Map, and in the event that the Zoning Map shows and provides more information than Schedule 'E', then in all such cases the Zoning Map shall govern.

**SCHEDULE E  
ZONING DESIGNATIONS  
INDEX**

