



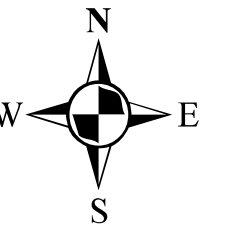
**ELECTORAL AREA 'D'
COMPREHENSIVE
LAND USE PLAN
BYLAW NO. 2435, 2016**

Legend

- Electoral Area D
- Area D Comprehensive Land Use Plan Area
- Outside Plan Area

Land Use Designations

- Agriculture (AG)
- Resource Area (RA)
- Environmental Reserve (ER)
- Suburban Residential (RS)
- Country Residential (RC)
- Rural Residential (RR)
- Comprehensive Development Zone (CDZ)
- General Commercial (GC)
- Tourist Commercial (TC)
- Industrial (M)
- Community Service (CS)
- Parks and Recreation (PR)



Map Projection: UTM Zone 11 1:2,500
Map Datum: NAD83

CAVEAT

The boundaries of the Land Use Designations listed in this bylaw together with explanatory legends, notations, or references in respect thereof, are delineated and described on the Land Use Designation Map. The Land Use Designation Map consists of the computer record compiled by means of a geographic information system. The Land Use Designation Map is kept in the Office of the Secretary at the Regional District Office. The Land Use Designation Map forms part of this bylaw. A generalized diagrammatic representation of the Land Use Designation Map is annexed to this bylaw as Schedule B. The Land Use Designation Map forming part of this bylaw is at a scale that provides clear and more detailed information than the generalized diagrammatic representation shown on Schedule 'B' of Bylaw No. 2435. In the event of a conflict of inconsistency between Schedule 'B' and the Land Use Designation Map, and in the event that the Land Use Designation Map shows and provides more information than Schedule 'B', then in all such cases the Land Use Designation Map shall govern.

**SCHEDULE A1
LAND USE DESIGNATIONS
MAP 1 OF 5 Ainsworth**

This is Schedule 'B1' Map 1 of 5 Electoral Area 'D' Comprehensive Land Use Bylaw No. 2435, 2016

ADOPTED this ____ day of _____, 2016

Chair _____

Secretary _____

DATA SOURCES

The following sources of data are updated as changes occur:

Cadastral Lot - Surveyed lots/parcels of land: Sources: Crown Land Registry Services and RDCK

District Lot: Source: Crown Land Registry Services, Integrated Cadastral Initiative (ICI) and RDCK

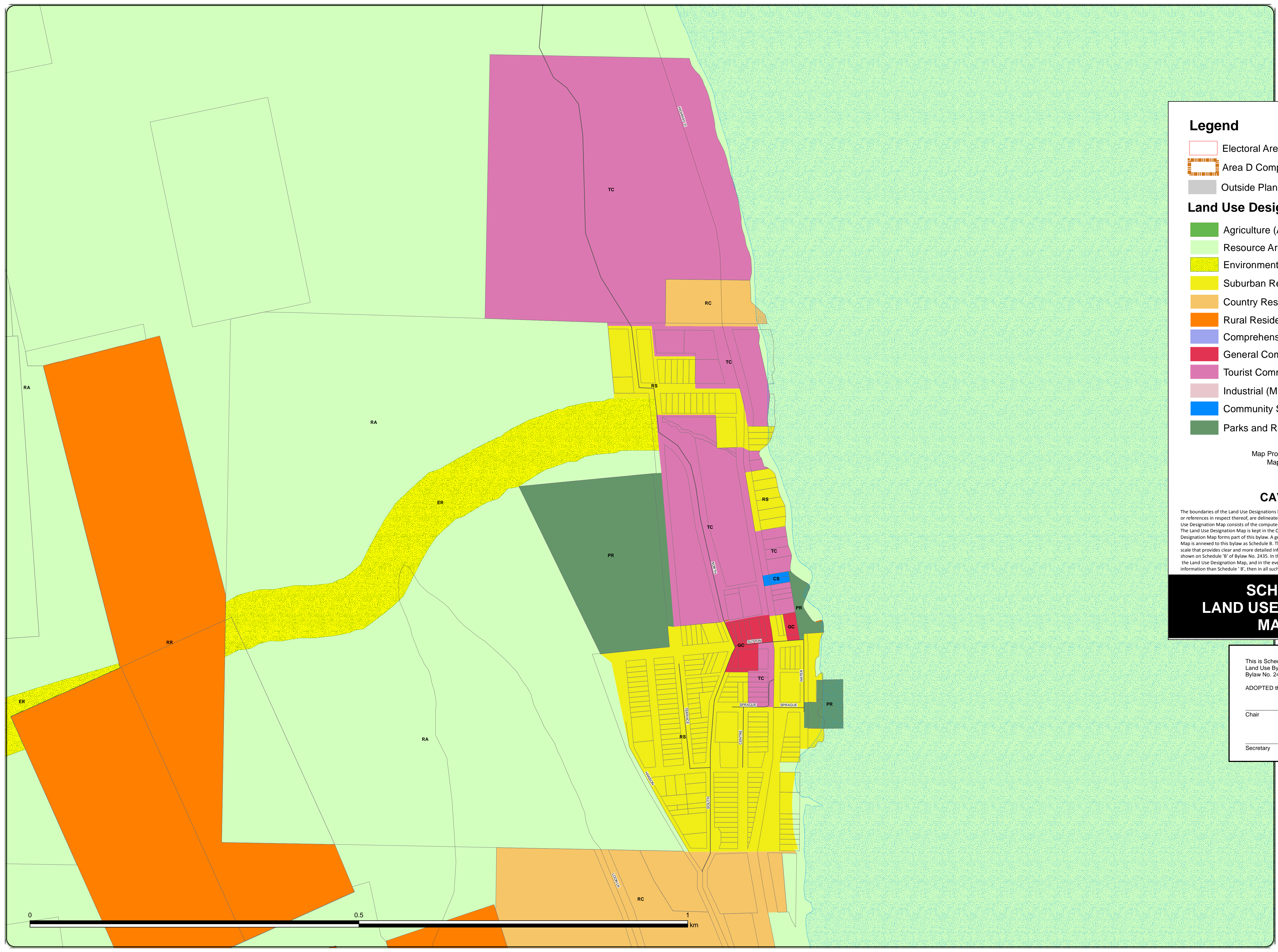
TRIM Data - Planimetry, Unsurveyed Roads, and Contours: Source: Ministry of Water, Land and Air Protection

ALR - Agricultural Land Reserve: Source: BC Land Reserve Commission

Zoning - Rural Land Use, Land Use and Zoning Bylaws, where bylaws are in place: Source: RDCK

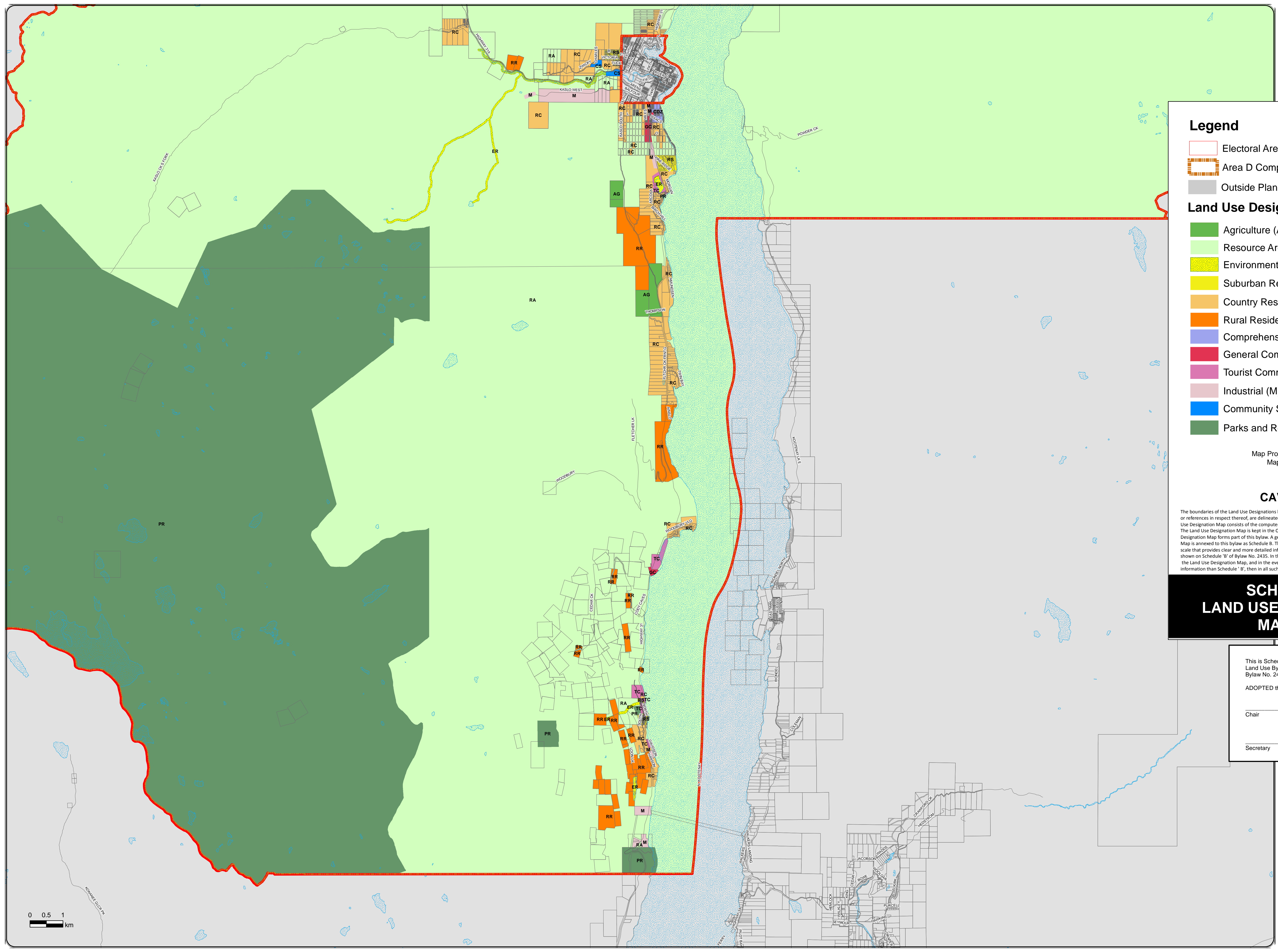
Roads - Road centerline compiled 2003; Source: RDCK

Regional District of Central Kootenay
Box 590, 202 Lakeside Drive, Nelson, BC V1L 5R4
Phone: (250) 352-6665
Toll-Free 1-800-268-7325 (BC)
Fax: (250) 352-9500 Internet: www.rdck.bc.ca



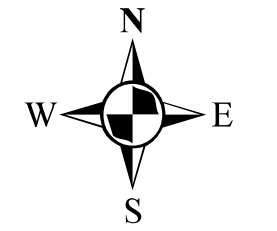


**ELECTORAL AREA 'D'
COMPREHENSIVE
LAND USE PLAN
BYLAW NO. 2435, 2016**



Legend

- Electoral Area D
 - Area D Comprehensive Land Use Plan Area
 - Outside Plan Area
- Land Use Designations**
- Agriculture (AG)
 - Resource Area (RA)
 - Environmental Reserve (ER)
 - Suburban Residential (RS)
 - Country Residential (RC)
 - Rural Residential (RR)
 - Comprehensive Development Zone (CDZ)
 - General Commercial (GC)
 - Tourist Commercial (TC)
 - Industrial (M)
 - Community Service (CS)
 - Parks and Recreation (PR)



Map Projection: UTM Zone 11 1:50,000
Map Datum: NAD83

CAVEAT

The boundaries of the Land Use Designations listed in this bylaw together with explanatory legends, notations, or references in respect thereof, are delineated and described on the Land Use Designation Map. The Land Use Designation Map consists of the computer record compiled by means of a geographic information system. The Land Use Designation Map is kept in the Office of the Secretary at the Regional District Office. The Land Use Designation Map forms part of this bylaw. A generalized diagrammatic representation of the Land Use Designation Map is annexed to this bylaw as Schedule B. The Land Use Designation Map forming part of this bylaw is at a scale that provides clear and more detailed information than the generalized diagrammatic representation shown on Schedule 'B' of Bylaw No. 2435. In the event of a conflict of inconsistency between Schedule 'B' and the Land Use Designation Map, and in the event that the Land Use Designation Map shows and provides more information than Schedule 'B', then in all such cases the Land Use Designation Map shall govern.

**SCHEDULE A1
LAND USE DESIGNATIONS
MAP 2 OF 5 South**

This is Schedule 'B1' Map 2 of 5 Electoral Area 'D' Comprehensive Land Use Bylaw No. 2435, 2016

ADOPTED this ____ day of _____, 2016

Chair _____

Secretary _____

DATA SOURCES

The following sources of data are updated as changes occur:

- Cadastral Lot - Surveyed lots/parcels of land: Sources: Crown Land Registry Services and RDCK
- District Lot: Source: Crown Land Registry Services, Integrated Cadastral Initiative (ICI) and RDCK
- TRIM Data - Planimetry, Unsurveyed Roads, and Contours: Source: Ministry of Water, Land and Air Protection
- ALR - Agricultural Land Reserve: Source: BC Land Reserve Commission
- Zoning - Rural Land Use, Land Use and Zoning Bylaws, where bylaws are in place: Source: RDCK
- Roads - Road centerline compiled 2003; Source: RDCK
- Regional District of Central Kootenay
Box 590, 202 Lakeside Drive, Nelson, BC V1L 5R4
Phone: (250) 352-6665
Toll-Free 1-800-268-7325 (BC)
Fax: (250) 352-9300 Internet: www.rdck.bc.ca

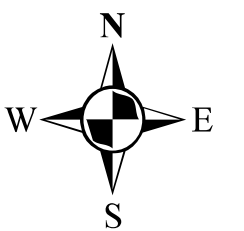




**ELECTORAL AREA 'D'
COMPREHENSIVE
LAND USE PLAN
BYLAW NO. 2435, 2016**

Legend

- Electoral Area D
 - Area D Comprehensive Land Use Plan Area
 - Outside Plan Area
- Land Use Designations**
- Agriculture (AG)
 - Resource Area (RA)
 - Environmental Reserve (ER)
 - Suburban Residential (RS)
 - Country Residential (RC)
 - Rural Residential (RR)
 - Comprehensive Development Zone (CDZ)
 - General Commercial (GC)
 - Tourist Commercial (TC)
 - Industrial (M)
 - Community Service (CS)
 - Parks and Recreation (PR)



Map Projection: UTM Zone 11 1:50,000
Map Datum: NAD83

CAVEAT

The boundaries of the Land Use Designations listed in this bylaw together with explanatory legends, notations, or references in respect thereof, are delineated and described on the Land Use Designation Map. The Land Use Designation Map consists of the computer record compiled by means of a geographic information system. The Land Use Designation Map is kept in the Office of the Secretary at the Regional District Office. The Land Use Designation Map forms part of this bylaw. A generalized diagrammatic representation of the Land Use Designation Map is annexed to this bylaw as Schedule B. The Land Use Designation Map forming part of this bylaw is at a scale that provides clear and more detailed information than the generalized diagrammatic representation shown on Schedule 'B' of Bylaw No. 2435. In the event of a conflict of inconsistency between Schedule 'B' and the Land Use Designation Map, and in the event that the Land Use Designation Map shows and provides more information than Schedule 'B', then in all such cases the Land Use Designation Map shall govern.

**SCHEDULE A1
LAND USE DESIGNATIONS
MAP 3 OF 5 Central**

This is Schedule 'B1' Map 3 of 5 Electoral Area 'D' Comprehensive Land Use Bylaw No. 2435, 2016

ADOPTED this ____ day of _____, 2016

Chair _____

Secretary _____

DATA SOURCES

The following sources of data are updated as changes occur:

Cadastral Lot - Surveyed lots/parcels of land:
Sources: Crown Land Registry Services and RDCK

District Lot: Source: Crown Land Registry Services, Integrated Cadastral Initiative (ICI) and RDCK

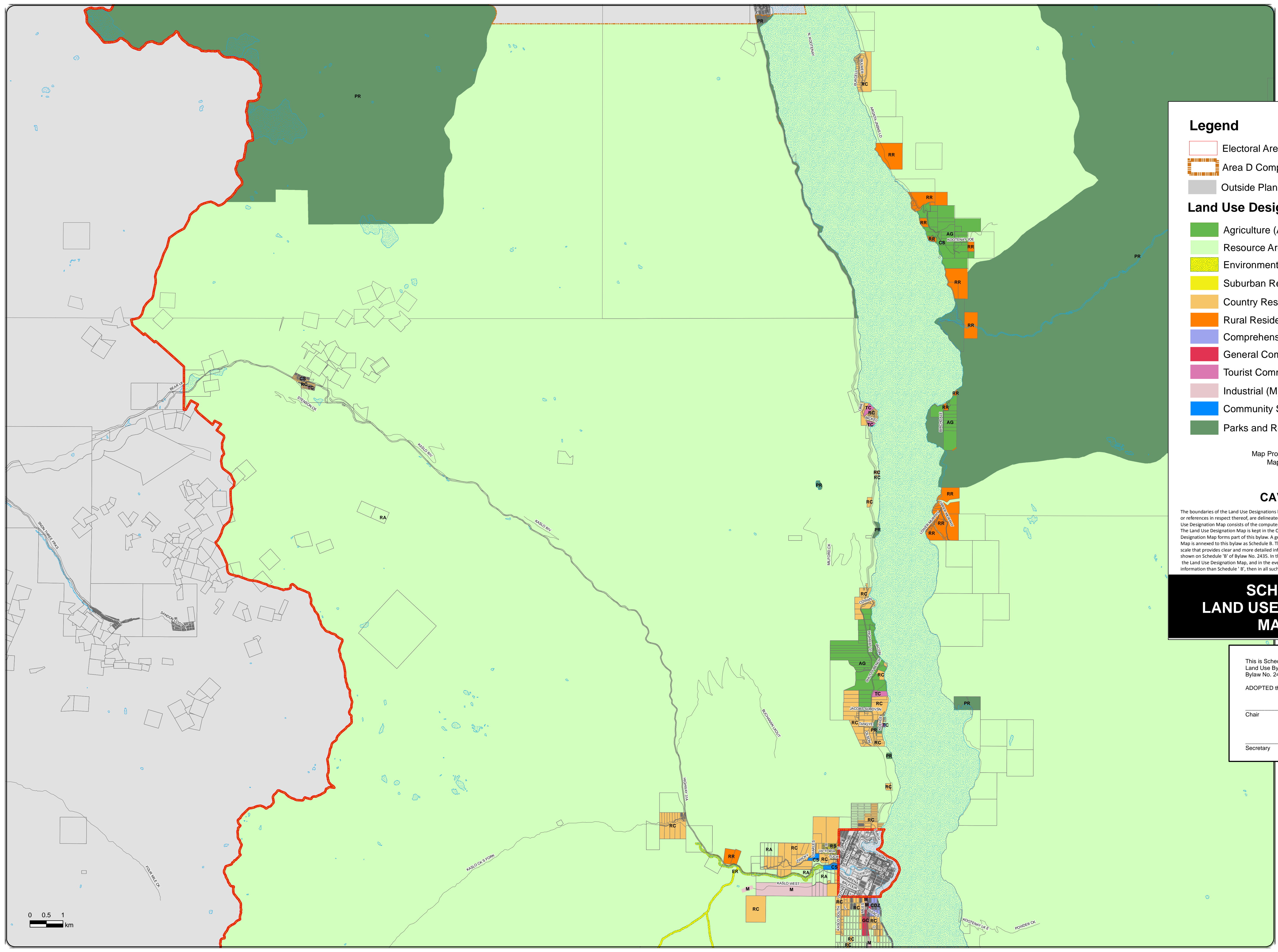
TRIM Data - Planimetry, Unsurveyed Roads, and Contours; Source: Ministry of Water, Land and Air Protection

ALR - Agricultural Land Reserve; Source: BC Land Reserve Commission

Zoning - Rural Land Use, Land Use and Zoning Bylaws, where bylaws are in place; Source: RDCK

Roads - Road centerline compiled 2003; Source: RDCK

Regional District of Central Kootenay
Box 590, 202 Lakeside Drive, Nelson, BC V1L 5R4
Phone: (250) 352-6665
Toll-Free 1-800-268-7325 (BC)
Fax: (250) 352-9500 Internet: www.rdck.bc.ca

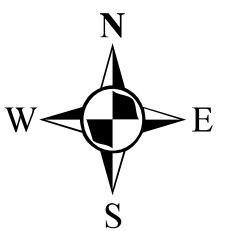




**ELECTORAL AREA 'D'
COMPREHENSIVE
LAND USE PLAN
BYLAW NO. 2435, 2016**

Legend

- Electoral Area D
 - Area D Comprehensive Land Use Plan Area
 - Outside Plan Area
- Land Use Designations**
- Agriculture (AG)
 - Resource Area (RA)
 - Environmental Reserve (ER)
 - Suburban Residential (RS)
 - Country Residential (RC)
 - Rural Residential (RR)
 - Comprehensive Development Zone (CDZ)
 - General Commercial (GC)
 - Tourist Commercial (TC)
 - Industrial (M)
 - Community Service (CS)
 - Parks and Recreation (PR)



Map Projection: UTM Zone 11 1:12,000
Map Datum: NAD83

CAVEAT

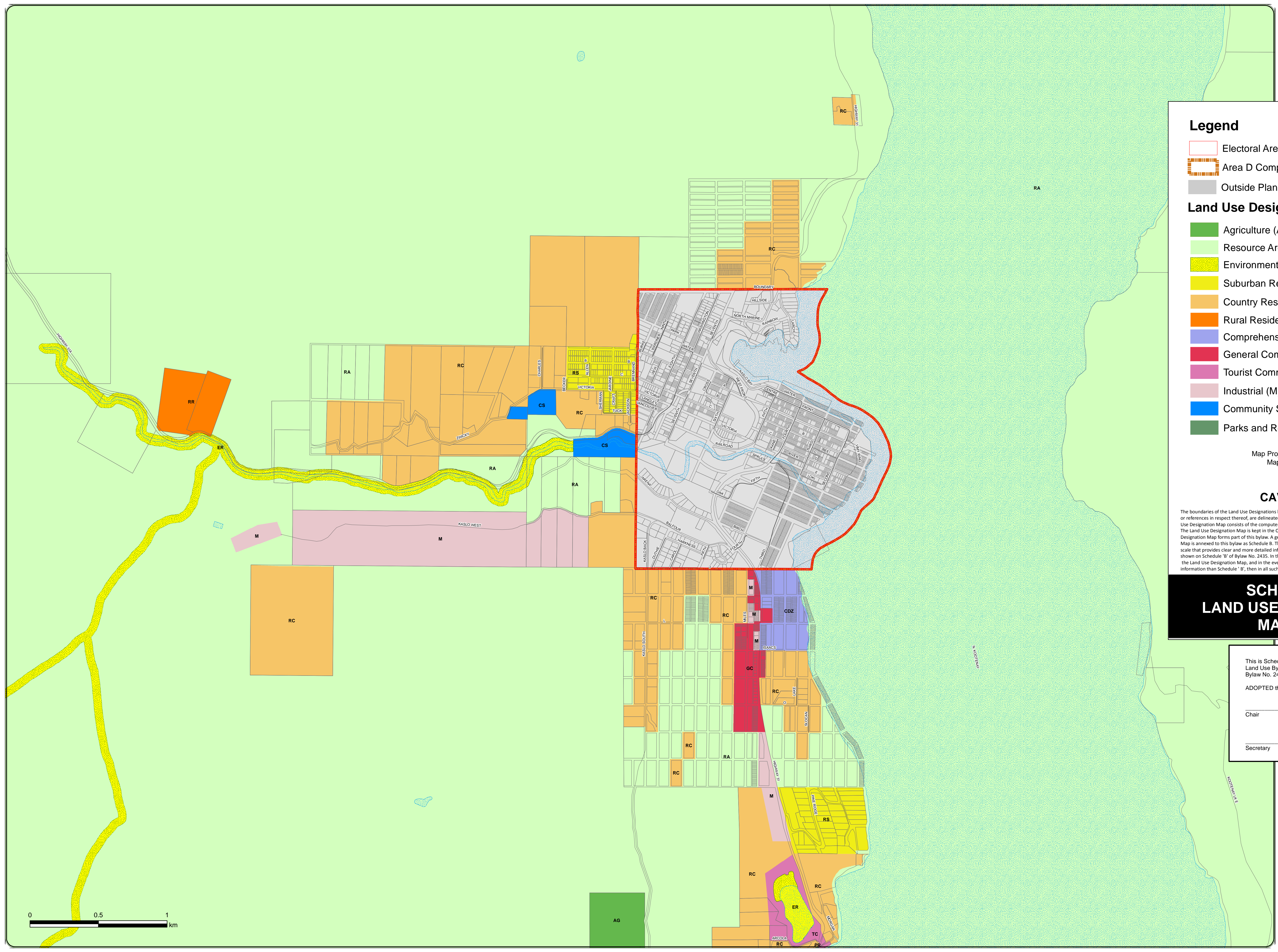
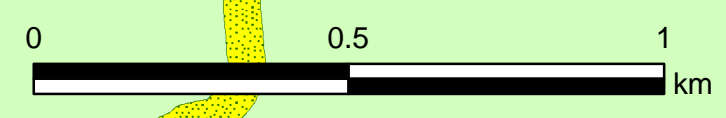
The boundaries of the Land Use Designations listed in this bylaw together with explanatory legends, notations, or references in respect thereof, are delineated and described on the Land Use Designation Map. The Land Use Designation Map consists of the computer record compiled by means of a geographic information system. The Land Use Designation Map is kept in the Office of the Secretary at the Regional District Office. The Land Use Designation Map forms part of this bylaw. A generalized diagrammatic representation of the Land Use Designation Map is annexed to this bylaw as Schedule B. The Land Use Designation Map forming part of this bylaw is at a scale that provides clear and more detailed information than the generalized diagrammatic representation shown on Schedule 'B' of Bylaw No. 2435. In the event of a conflict of inconsistency between Schedule 'B' and the Land Use Designation Map, and in the event that the Land Use Designation Map shows and provides more information than Schedule 'B', then in all such cases the Land Use Designation Map shall govern.

**SCHEDULE A1
LAND USE DESIGNATIONS
MAP 4 OF 5 Kaslo**

This is Schedule 'B1' Map 4 of 5 Electoral Area 'D' Comprehensive Land Use Bylaw
Bylaw No. 2435, 2016
ADOPTED this ____ day of _____, 2016
Chair _____
Secretary _____

DATA SOURCES

The following sources of data are updated as changes occur:
Cadastral Lot - Surveyed lots/parcels of land: Sources: Crown Land Registry Services and RDCK
District Lot: Source: Crown Land Registry Services, Integrated Cadastral Initiative (ICI) and RDCK
TRIM Data - Planimetry, Unsurveyed Roads, and Contours: Source: Ministry of Water, Land and Air Protection
ALR - Agricultural Land Reserve: Source: BC Land Reserve Commission
Zoning - Rural Land Use, Land Use and Zoning Bylaws, where bylaws are in place: Source: RDCK
Roads - Road centerline compiled 2003; Source: RDCK
Regional District of Central Kootenay
Box 590, 202 Lakeside Drive, Nelson, BC V1L 5R4
Phone: (250) 352-6665
Toll-Free 1-800-268-7325 (BC)
Fax: (250) 352-9500 Internet: www.rdck.bc.ca





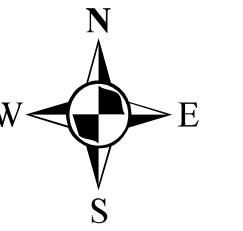
**ELECTORAL AREA 'D'
COMPREHENSIVE
LAND USE PLAN
BYLAW NO. 2435, 2016**

Legend

- Electoral Area D
- Area D Comprehensive Land Use Plan Area
- Outside Plan Area

Land Use Designations

- Agriculture (AG)
- Resource Area (RA)
- Environmental Reserve (ER)
- Suburban Residential (RS)
- Country Residential (RC)
- Rural Residential (RR)
- Comprehensive Development Zone (CDZ)
- General Commercial (GC)
- Tourist Commercial (TC)
- Industrial (M)
- Community Service (CS)
- Parks and Recreation (PR)



Map Projection: UTM Zone 11 1:50,000
Map Datum: NAD83

CAVEAT

The boundaries of the Land Use Designations listed in this bylaw together with explanatory legends, notations, or references in respect thereof, are delineated and described on the Land Use Designation Map. The Land Use Designation Map consists of the computer record compiled by means of a geographic information system. The Land Use Designation Map is kept in the Office of the Secretary at the Regional District Office. The Land Use Designation Map forms part of this bylaw. A generalized diagrammatic representation of the Land Use Designation Map is annexed to this bylaw as Schedule B. The Land Use Designation Map forming part of this bylaw is at a scale that provides clear and more detailed information than the generalized diagrammatic representation shown on Schedule 'B' of Bylaw No. 2435. In the event of a conflict of inconsistency between Schedule 'B' and the Land Use Designation Map, and in the event that the Land Use Designation Map shows and provides more information than Schedule 'B', then in all such cases the Land Use Designation Map shall govern.

**SCHEDULE A1
LAND USE DESIGNATIONS
MAP 5 OF 5 North**

This is Schedule 'B1' Map 5 of 5 Electoral Area 'D' Comprehensive Land Use Bylaw No. 2435, 2016

ADOPTED this ____ day of _____, 2016

Chair _____

Secretary _____

DATA SOURCES

The following sources of data are updated as changes occur:

Cadastral Lot - Surveyed lots/parcels of land:
Sources: Crown Land Registry Services and RDCK

District Lot: Source: Crown Land Registry Services, Integrated Cadastral Initiative (ICI) and RDCK

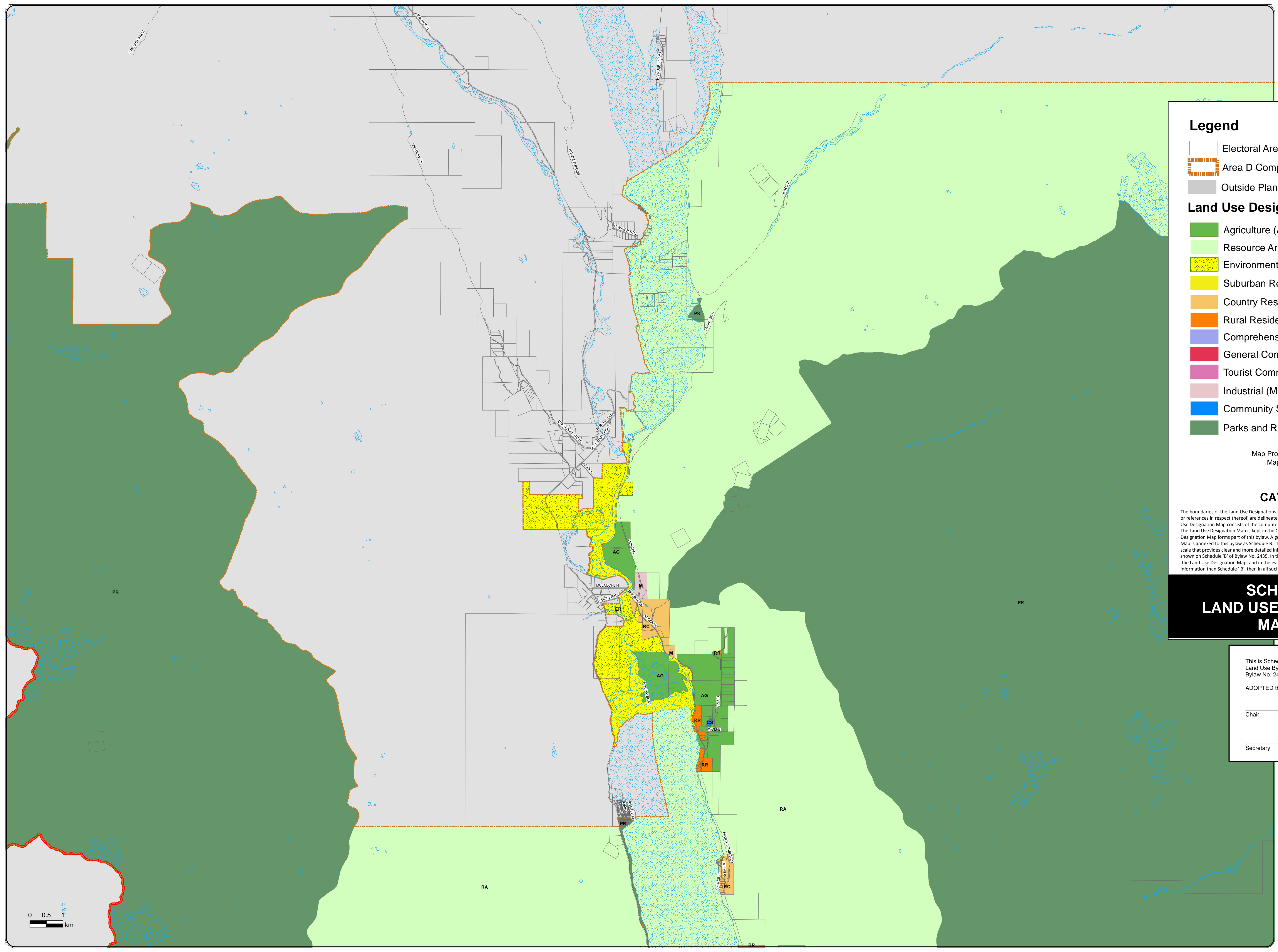
TRIM Data - Planimetry, Unsurveyed Roads, and Contours; Source: Ministry of Water, Land and Air Protection

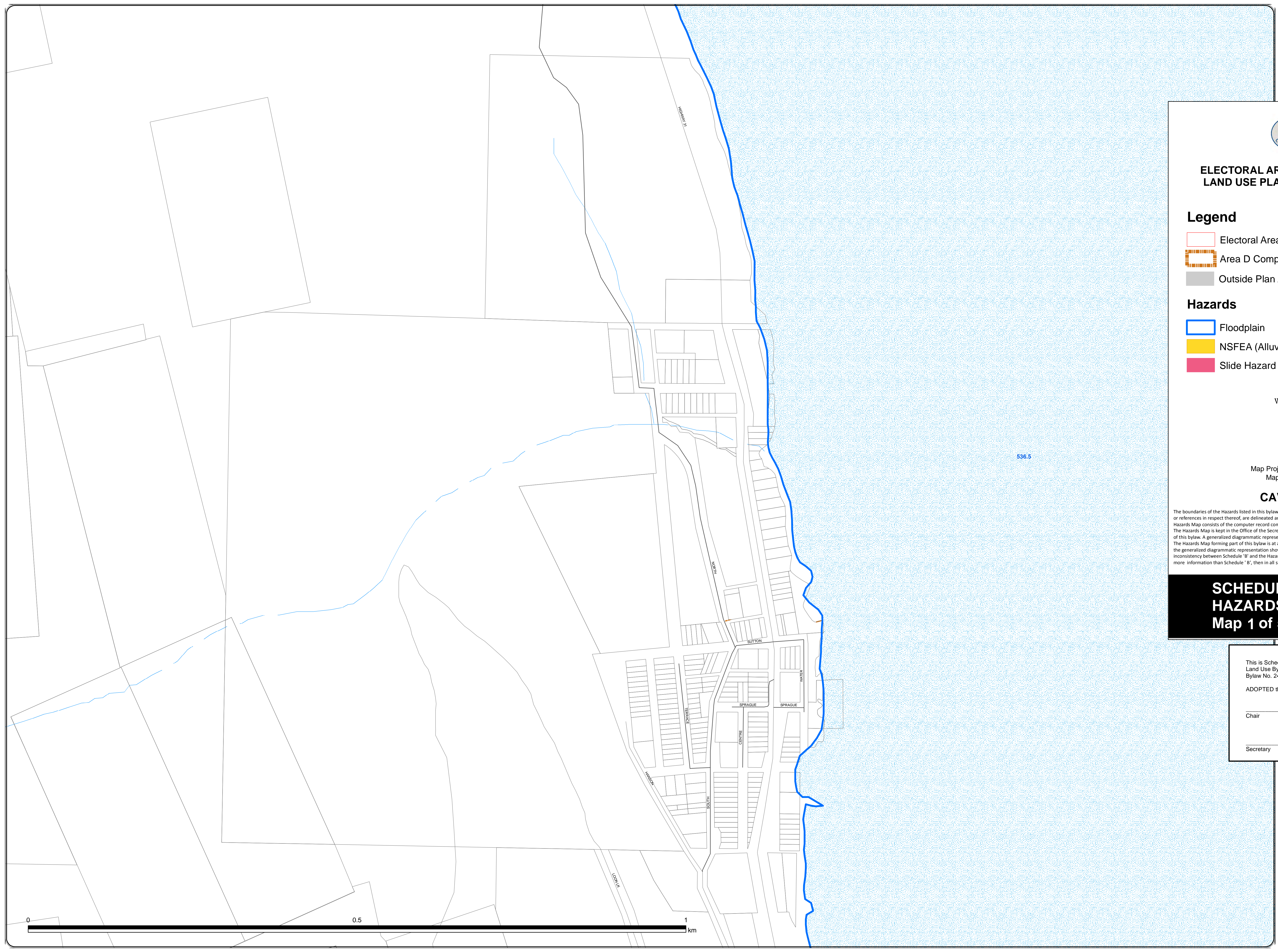
ALR - Agricultural Land Reserve; Source: BC Land Reserve Commission

Zoning - Rural Land Use, Land Use and Zoning Bylaws, where bylaws are in place; Source: RDCK

Roads - Road centerline compiled 2003; Source: RDCK

Regional District of Central Kootenay
Box 590, 202 Lakeside Drive, Nelson, BC V1L 5R4
Phone: (250) 352-6665
Toll-Free 1-800-268-7325 (BC)
Fax: (250) 352-9500 Internet: www.rdck.bc.ca





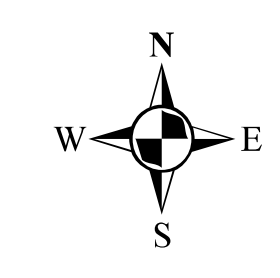
ELECTORAL AREA 'D' COMPREHENSIVE LAND USE PLAN BYLAW NO. 2435, 2016

Legend

- Electoral Area D
- Area D Comprehensive Land Use Plan Area
- Outside Plan Area

Hazards

- Floodplain
- NSFEA (Alluvial Fans)
- Slide Hazard



1:2,500

Map Projection: UTM Zone 11
Map Datum: NAD83

CAVEAT

The boundaries of the Hazards listed in this bylaw together with explanatory legends, notations, or references in respect thereof, are delineated and described on the Hazards Map. The Hazards Map consists of the computer record compiled by means of a geographic information system. The Hazards Map is kept in the Office of the Secretary at the Regional District Office. The Hazards Map forms part of this bylaw. A generalized diagrammatic representation of the Hazards Map is annexed to this bylaw as Schedule B. The Hazards Map forming part of this bylaw is at a scale that provides clear and more detailed information than the generalized diagrammatic representation shown on Schedule 'B' of Bylaw No. 2435. In the event of a conflict of inconsistency between Schedule 'B' and the Hazards Map, and in the event that the Hazards Map shows and provides more information than Schedule 'B', then in all such cases the Hazards Map shall govern.

**SCHEDULE A2
HAZARDS
Map 1 of 5 Ainsworth**

This is Schedule 'B2' Map 1 of 5 Electoral Area 'D' Comprehensive Land Use Bylaw No. 2435, 2016

ADOPTED this ____ day of ____, 2016

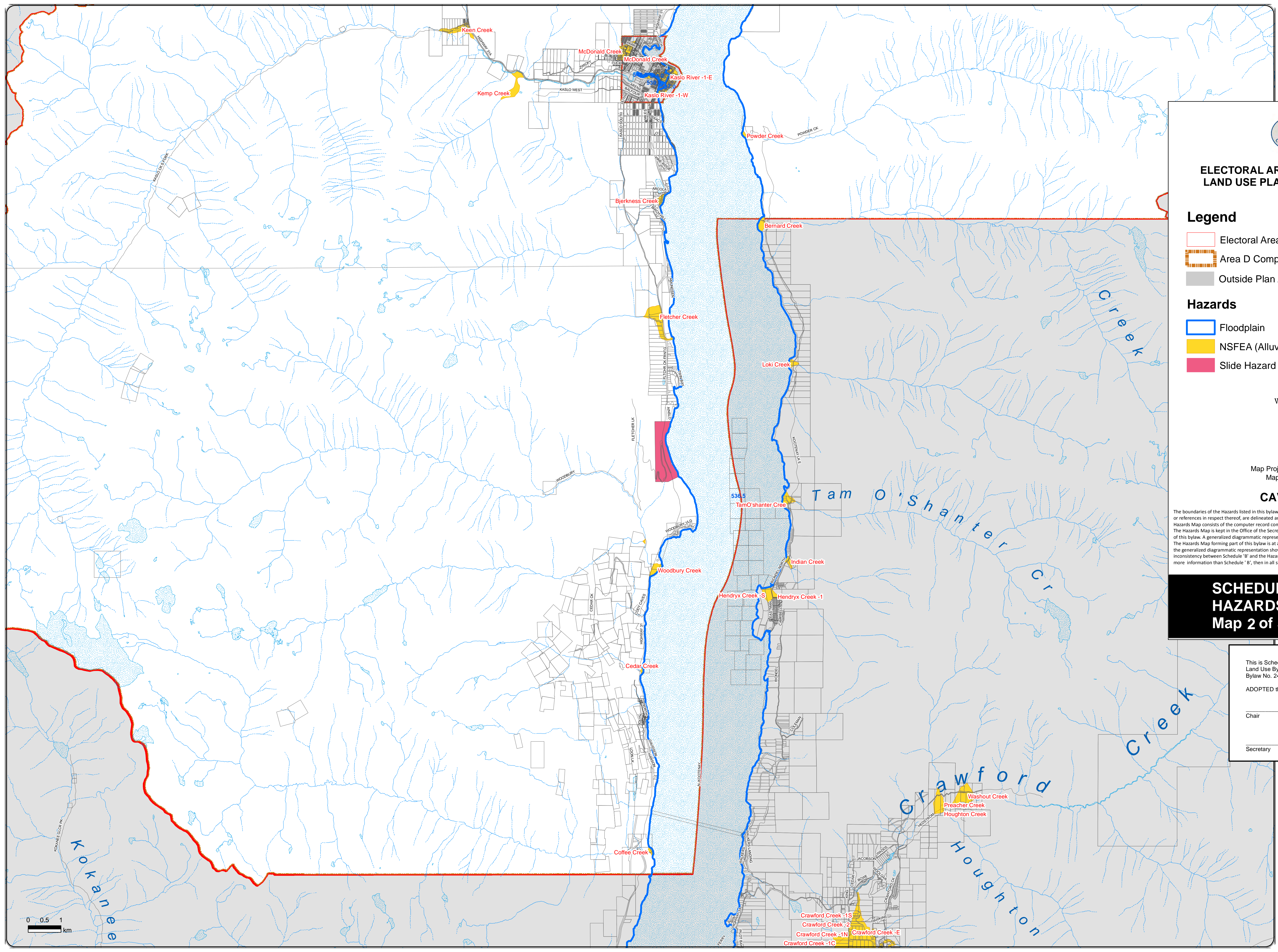
Chair _____

Secretary _____

DATA SOURCES

The following sources of data are updated as changes occur:

- Cadastral Lot - Surveyed lots/parcels of land: Sources: Crown Land Registry Services and RDCK
- District Lot: Source: Crown Land Registry Services, Integrated Cadastral Initiative (ICI) and RDCK
- TRIM Data - Planimetry, Unsurveyed Roads, and Contours: Source: Ministry of Water, Land and Air Protection
- ALR - Agricultural Land Reserve: Source: BC Land Reserve Commission
- Zoning - Rural Land Use, Land Use and Zoning Bylaws, where bylaws are in place: Source: RDCK
- Roads - Road centerline compiled 2003; Source: RDCK
- Regional District of Central Kootenay
Box 590, 202 Lakeside Drive, Nelson, BC V1L 5R4
Phone: (250) 352-6665
Toll-Free 1-800-268-7325 (BC)
Fax: (250) 352-9500 Internet: www.rdck.bc.ca



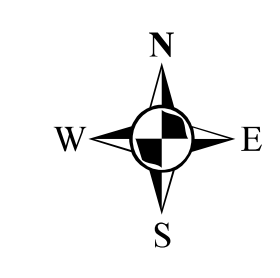
ELECTORAL AREA 'D' COMPREHENSIVE LAND USE PLAN BYLAW NO. 2435, 2016

Legend

- Electoral Area D
- Area D Comprehensive Land Use Plan Area
- Outside Plan Area

Hazards

- Floodplain
- NSFEA (Alluvial Fans)
- Slide Hazard



1:50,000

Map Projection: UTM Zone 11
Map Datum: NAD83

CAVEAT

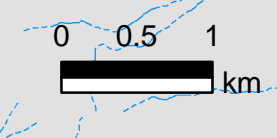
The boundaries of the Hazards listed in this bylaw together with explanatory legends, notations, or references in respect thereof, are delineated and described on the Hazards Map. The Hazards Map consists of the computer record compiled by means of a geographic information system. The Hazards Map is kept in the Office of the Secretary at the Regional District Office. The Hazards Map forms part of this bylaw. A generalized diagrammatic representation of the Hazards Map is annexed to this bylaw as Schedule B. The Hazards Map forming part of this bylaw is at a scale that provides clear and more detailed information than the generalized diagrammatic representation shown on Schedule 'B' of Bylaw No. 2435. In the event of a conflict of inconsistency between Schedule 'B' and the Hazards Map, and in the event that the Hazards Map shows and provides more information than Schedule 'B', then in all such cases the Hazards Map shall govern.

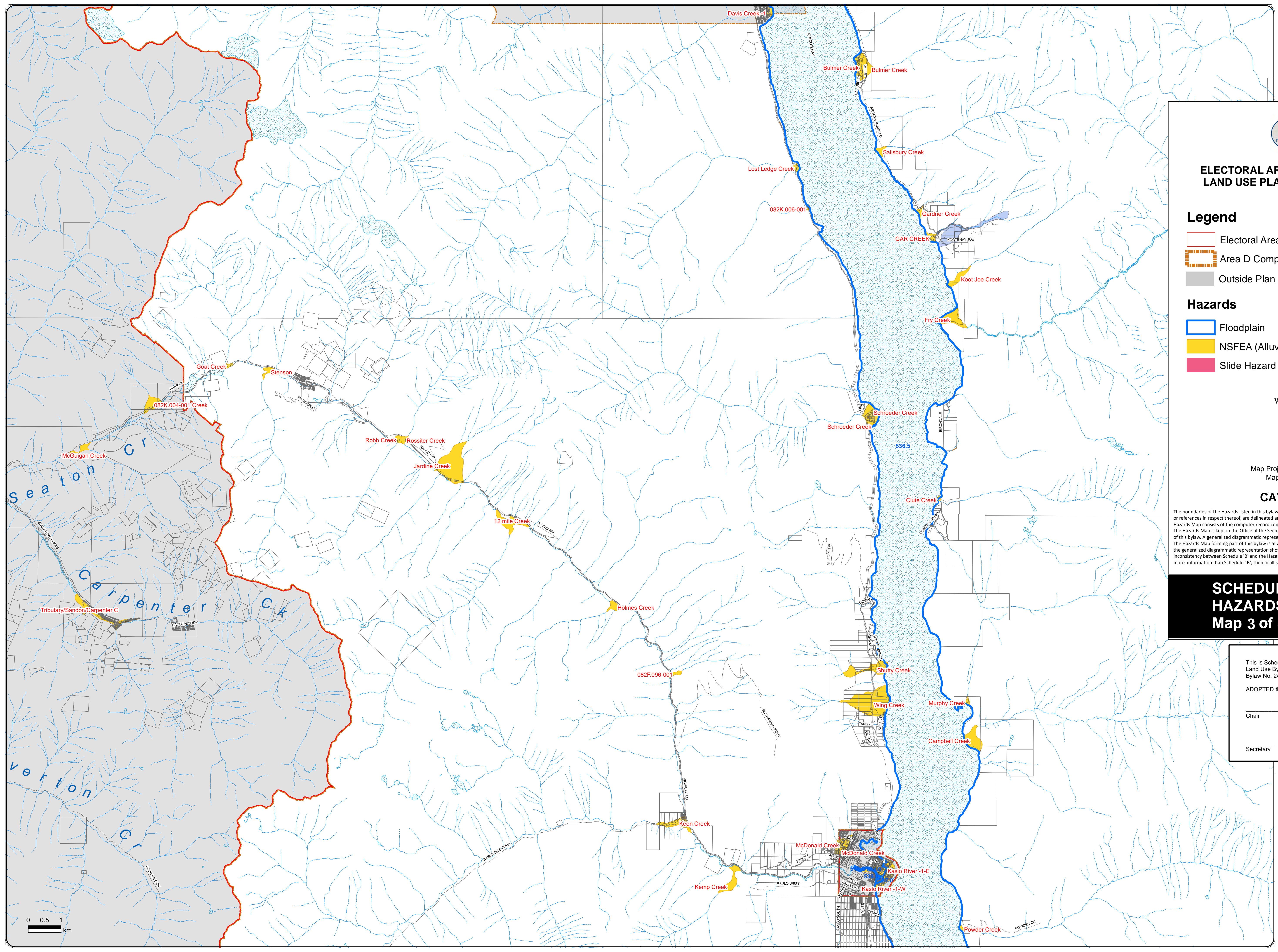
SCHEDULE A2 HAZARDS Map 2 of 5 South

This is Schedule 'B2' Map 2 of 5 Electoral Area 'D' Comprehensive Land Use Bylaw No. 2435, 2016
ADOPTED this ____ day of _____, 2016
Chair _____
Secretary _____

DATA SOURCES

The following sources of data are updated as changes occur:
Cadastral Lot - Surveyed lots/parcels of land: Sources: Crown Land Registry Services and RDCK
District Lot: Source: Crown Land Registry Services, Integrated Cadastral Initiative (ICI) and RDCK
TRIM Data - Planimetry, Unsurveyed Roads, and Contours: Source: Ministry of Water, Land and Air Protection
ALR - Agricultural Land Reserve: Source: BC Land Reserve Commission
Zoning - Rural Land Use, Land Use and Zoning Bylaws, where bylaws are in place: Source: RDCK
Roads - Road centerline compiled 2003; Source: RDCK
Regional District of Central Kootenay
Box 590, 202 Lakeside Drive, Nelson, BC V1L 5R4
Phone: (250) 352-6665
Toll-Free 1-800-268-7325 (BC)
Fax: (250) 352-9300 Internet: www.rdck.bc.ca





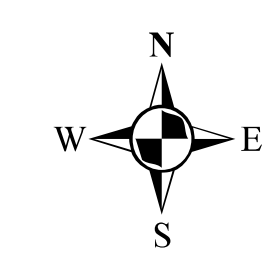
ELECTORAL AREA 'D' COMPREHENSIVE LAND USE PLAN BYLAW NO. 2435, 2016

Legend

- Electoral Area D
- Area D Comprehensive Land Use Plan Area
- Outside Plan Area

Hazards

- Floodplain
- NSFEA (Alluvial Fans)
- Slide Hazard



1:50,000

Map Projection: UTM Zone 11
Map Datum: NAD83

CAVEAT

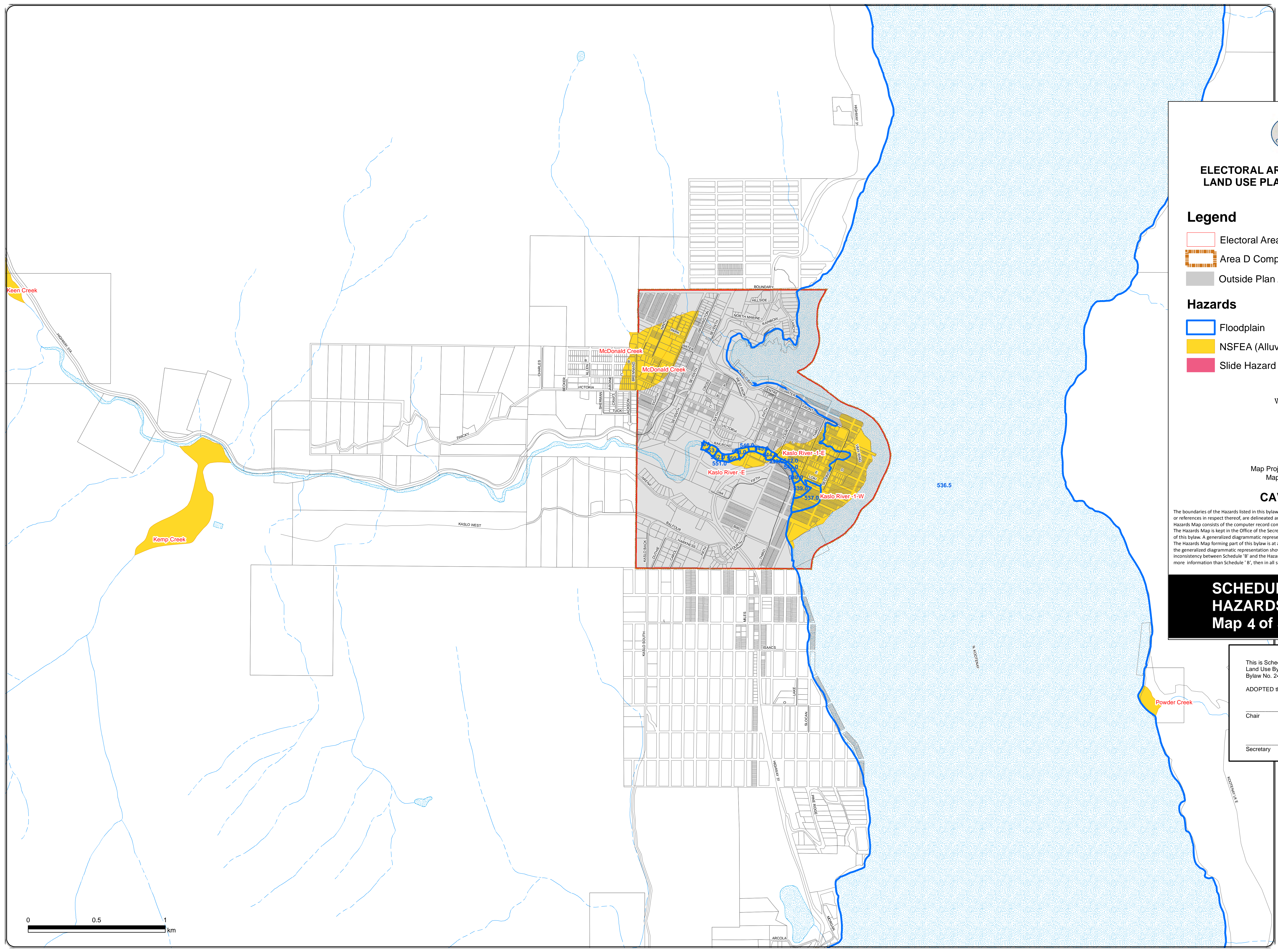
The boundaries of the Hazards listed in this bylaw together with explanatory legends, notations, or references in respect thereof, are delineated and described on the Hazards Map. The Hazards Map consists of the computer record compiled by means of a geographic information system. The Hazards Map is kept in the Office of the Secretary at the Regional District Office. The Hazards Map forms part of this bylaw. A generalized diagrammatic representation of the Hazards Map is annexed to this bylaw as Schedule B. The Hazards Map forming part of this bylaw is at a scale that provides clear and more detailed information than the generalized diagrammatic representation shown on Schedule 'B' of Bylaw No. 2435. In the event of a conflict of inconsistency between Schedule 'B' and the Hazards Map, and in the event that the Hazards Map shows and provides more information than Schedule 'B', then in all such cases the Hazards Map shall govern.

SCHEDULE A2 HAZARDS Map 3 of 5 Central

This is Schedule 'B2' Map 3 of 5 Electoral Area 'D' Comprehensive Land Use Bylaw No. 2435, 2016
ADOPTED this ____ day of _____, 2016
Chair _____
Secretary _____

DATA SOURCES

The following sources of data are updated as changes occur:
Cadastral Lot - Surveyed lots/parcels of land: Sources: Crown Land Registry Services and RDCK
District Lot: Source: Crown Land Registry Services, Integrated Cadastral Initiative (ICI) and RDCK
TRIM Data - Planimetry, Unsurveyed Roads, and Contours: Source: Ministry of Water, Land and Air Protection
ALR - Agricultural Land Reserve: Source: BC Land Reserve Commission
Zoning - Rural Land Use, Land Use and Zoning Bylaws, where bylaws are in place: Source: RDCK
Roads - Road centerline compiled 2003; Source: RDCK
Regional District of Central Kootenay
Box 590, 202 Lakeside Drive, Nelson, BC V1L 5R4
Phone: (250) 352-6665
Toll-Free 1-800-268-7325 (BC)
Fax: (250) 352-9300 Internet: www.rdck.bc.ca



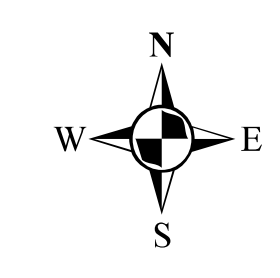
**ELECTORAL AREA 'D' COMPREHENSIVE
LAND USE PLAN BYLAW NO. 2435, 2016**

Legend

- Electoral Area D
- Area D Comprehensive Land Use Plan Area
- Outside Plan Area

Hazards

- Floodplain
- NSFEA (Alluvial Fans)
- Slide Hazard



1:12,000

Map Projection: UTM Zone 11
Map Datum: NAD83

CAVEAT

The boundaries of the Hazards listed in this bylaw together with explanatory legends, notations, or references in respect thereof, are delineated and described on the Hazards Map. The Hazards Map consists of the computer record compiled by means of a geographic information system. The Hazards Map is kept in the Office of the Secretary at the Regional District Office. The Hazards Map forms part of this bylaw. A generalized diagrammatic representation of the Hazards Map is annexed to this bylaw as Schedule B. The Hazards Map forming part of this bylaw is at a scale that provides clear and more detailed information than the generalized diagrammatic representation shown on Schedule 'B' of Bylaw No. 2435. In the event of a conflict of inconsistency between Schedule 'B' and the Hazards Map, and in the event that the Hazards Map shows and provides more information than Schedule 'B', then in all such cases the Hazards Map shall govern.

**SCHEDULE A2
HAZARDS
Map 4 of 5 Kaslo**

This is Schedule 'B2' Map 4 of 5 Electoral Area 'D' Comprehensive Land Use Bylaw No. 2435, 2016

ADOPTED this ____ day of _____, 2016

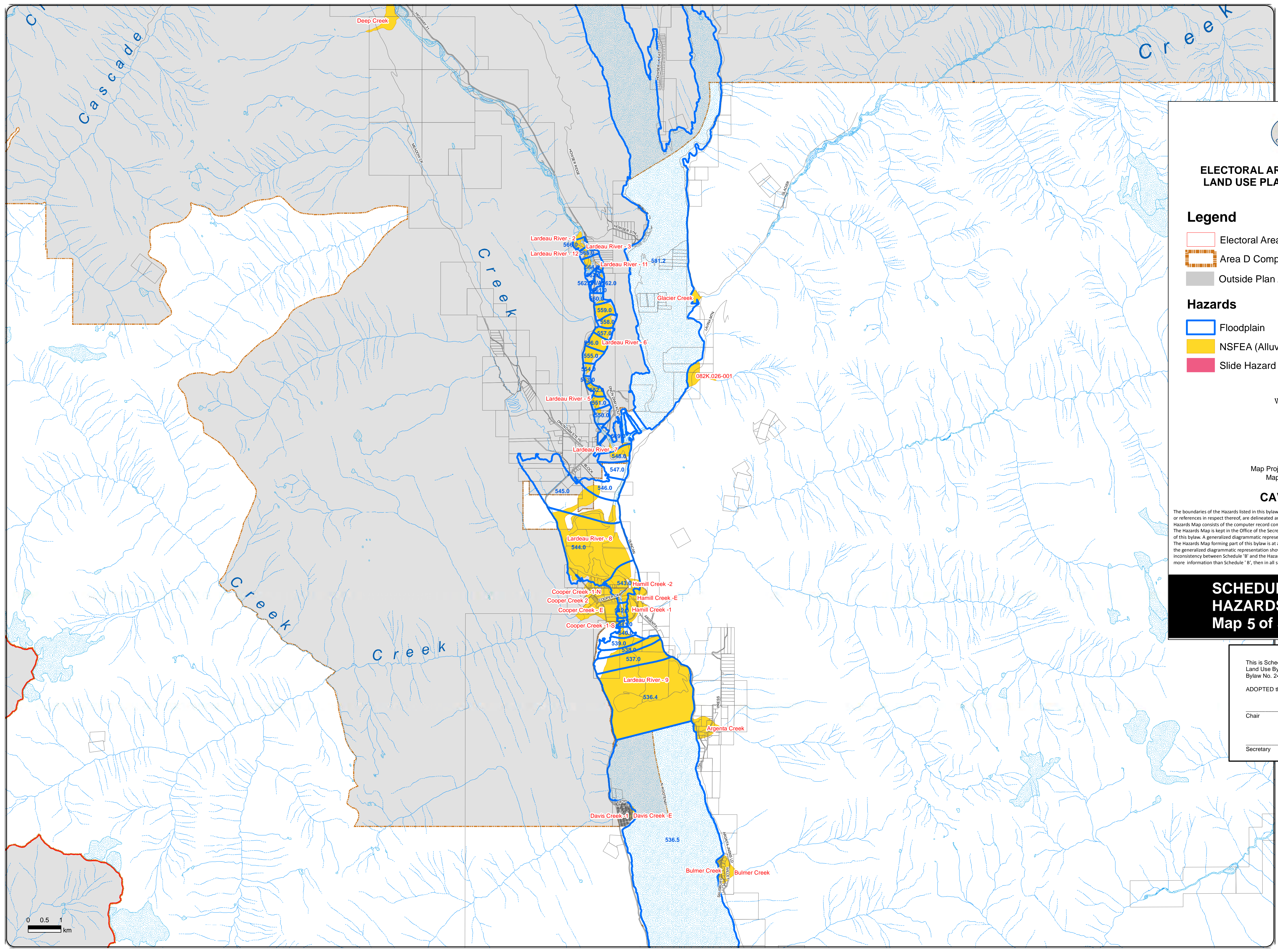
Chair _____

Secretary _____

DATA SOURCES

The following sources of data are updated as changes occur:

- Cadastral Lot - Surveyed lots/parcels of land: Sources: Crown Land Registry Services and RDCK
- District Lot: Source: Crown Land Registry Services, Integrated Cadastral Initiative (ICI) and RDCK
- TRIM Data - Planimetry, Unsurveyed Roads, and Contours: Source: Ministry of Water, Land and Air Protection
- ALR - Agricultural Land Reserve: Source: BC Land Reserve Commission
- Zoning - Rural Land Use, Land Use and Zoning Bylaws, where bylaws are in place: Source: RDCK
- Roads - Road centerline compiled 2003; Source: RDCK
- Regional District of Central Kootenay
Box 590, 202 Lakeside Drive, Nelson, BC V1L 5R4
Phone: (250) 352-6665
Toll-Free 1-800-268-7325 (BC)
Fax: (250) 352-9500 Internet: www.rdck.bc.ca



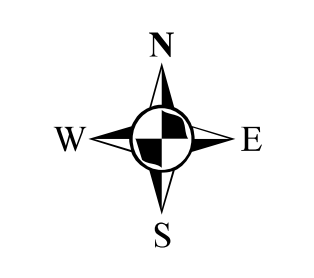
**ELECTORAL AREA 'D' COMPREHENSIVE
LAND USE PLAN BYLAW NO. 2435, 2016**

Legend

- Electoral Area D
- Area D Comprehensive Land Use Plan Area
- Outside Plan Area

Hazards

- Floodplain
- NSFEA (Alluvial Fans)
- Slide Hazard



1:50,000

Map Projection: UTM Zone 11
Map Datum: NAD83

CAVEAT

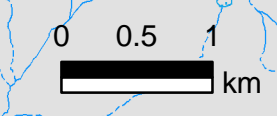
The boundaries of the Hazards listed in this bylaw together with explanatory legends, notations, or references in respect thereof, are delineated and described on the Hazards Map. The Hazards Map consists of the computer record compiled by means of a geographic information system. The Hazards Map is kept in the Office of the Secretary at the Regional District Office. The Hazards Map forms part of this bylaw. A generalized diagrammatic representation of the Hazards Map is annexed to this bylaw as Schedule B. The Hazards Map forming part of this bylaw is at a scale that provides clear and more detailed information than the generalized diagrammatic representation shown on Schedule 'B' of Bylaw No. 2435. In the event of a conflict of inconsistency between Schedule 'B' and the Hazards Map, and in the event that the Hazards Map shows and provides more information than Schedule 'B', then in all such cases the Hazards Map shall govern.

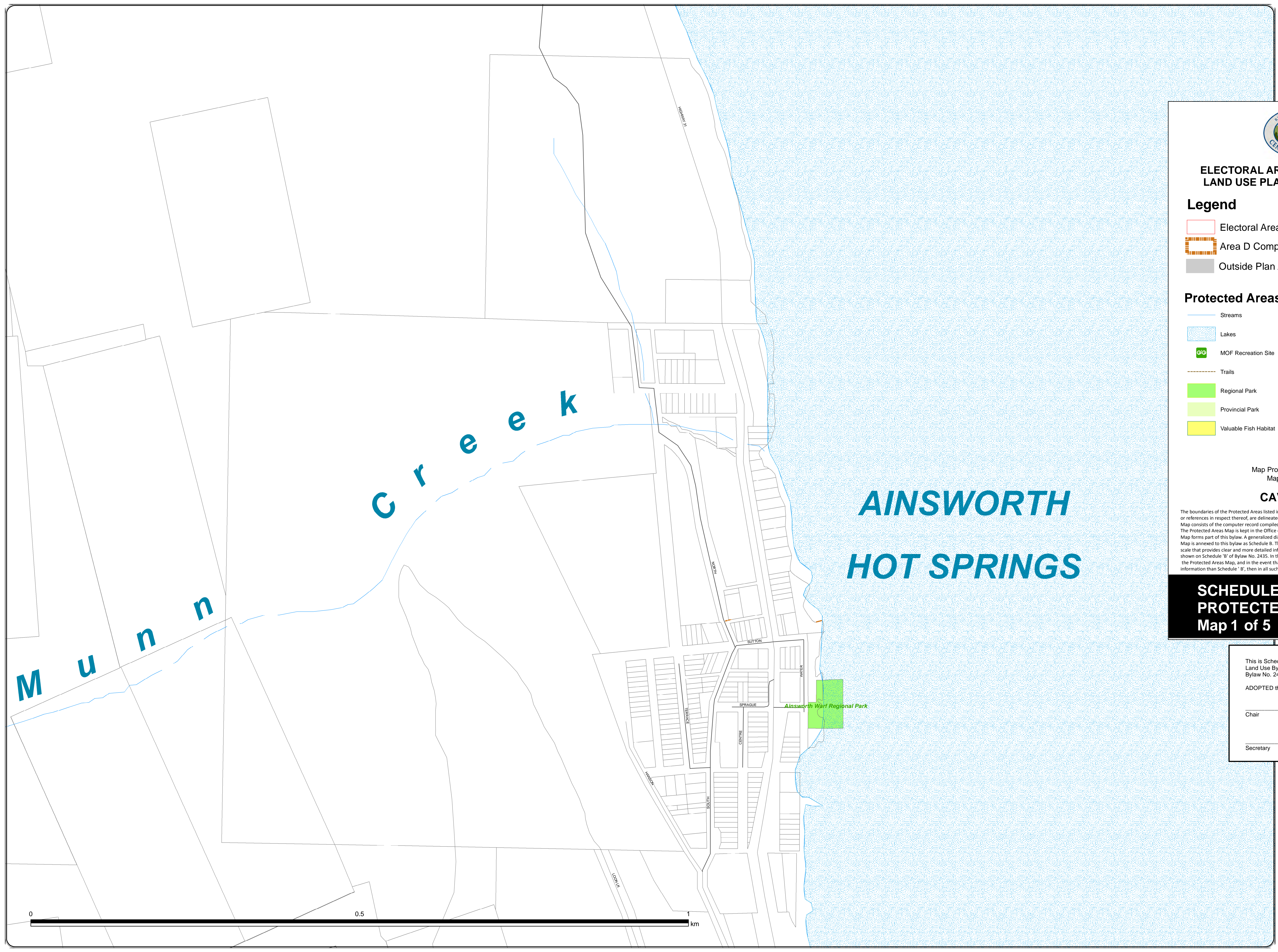
**SCHEDULE A2
HAZARDS
Map 5 of 5 North**

This is Schedule 'B2' Map 5 of 5 Electoral Area 'D' Comprehensive Land Use Bylaw No. 2435, 2016
ADOPTED this ____ day of _____, 2016
Chair _____
Secretary _____

DATA SOURCES




The following sources of data are updated as changes occur:
Cadastral Lot - Surveyed lots/parcels of land: Sources: Crown Land Registry Services and RDCK
District Lot: Source: Crown Land Registry Services, Integrated Cadastral Initiative (ICI) and RDCK
TRIM Data - Planimetry, Unsurveyed Roads, and Contours: Source: Ministry of Water, Land and Air Protection
ALR - Agricultural Land Reserve: Source: BC Land Reserve Commission
Zoning - Rural Land Use, Land Use and Zoning Bylaws, where bylaws are in place: Source: RDCK
Roads - Road centerline compiled 2003; Source: RDCK
Regional District of Central Kootenay
Box 590, 202 Lakeside Drive, Nelson, BC V1L 5R4
Phone: (250) 352-6665
Toll-Free 1-800-268-7325 (BC)
Fax: (250) 352-9300 Internet: www.rdck.bc.ca





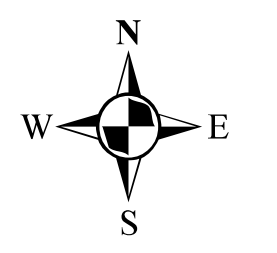
ELECTORAL AREA 'D' COMPREHENSIVE LAND USE PLAN BYLAW NO. 2435, 2016

Legend

-  Electoral Area D
-  Area D Comprehensive Land Use Plan Area
-  Outside Plan Area

Protected Areas

-  Streams
-  Lakes
-  MOF Recreation Site
-  Trails
-  Regional Park
-  Provincial Park
-  Valuable Fish Habitat



1:2,500

Map Projection: UTM Zone 11
Map Datum: NAD83

CAVEAT

The boundaries of the Protected Areas listed in this bylaw together with explanatory legends, notations, or references in respect thereof, are delineated and described on the Protected Areas Map. The Protected Areas Map consists of the computer record compiled by means of a geographic information system. The Protected Areas Map is kept in the Office of the Secretary at the Regional District Office. The Protected Areas Map forms part of this bylaw. A generalized diagrammatic representation of the Protected Areas Map is annexed to this bylaw as Schedule B. The Protected Areas Map forming part of this bylaw is at a scale that provides clear and more detailed information than the generalized diagrammatic representation shown on Schedule 'B' of Bylaw No. 2435. In the event of a conflict of inconsistency between Schedule 'B' and the Protected Areas Map, and in the event that the Land Use Designation Map shows and provides more information than Schedule 'B', then in all such cases the Protected Areas Map shall govern.

**SCHEDULE A3
PROTECTED AREAS
Map 1 of 5 Ainsworth**

This is Schedule 'B3' Map 1 of 5 Electoral Area 'D' Comprehensive Land Use Bylaw No. 2435, 2016

ADOPTED this ____ day of _____, 2016

Chair _____

Secretary _____

DATA SOURCES

The following sources of data are updated as changes occur:

Cadastral Lot - Surveyed lots/parcels of land: Sources: Crown Land Registry Services and RDCK

District Lot: Source: Crown Land Registry Services, Integrated Cadastral Initiative (ICI) and RDCK

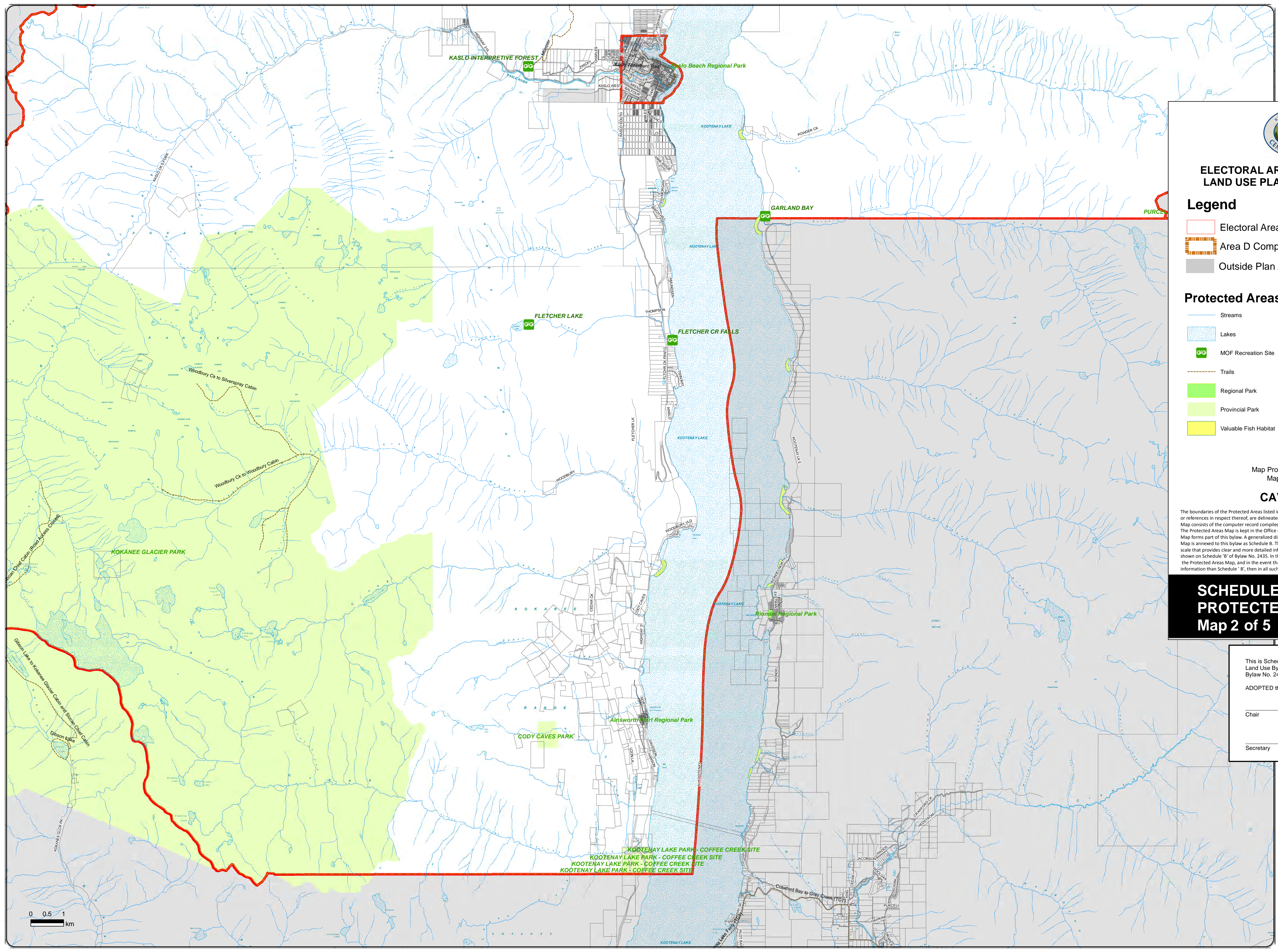
TRIM Data - Planimetry, Unsurveyed Roads, and Contours: Source: Ministry of Water, Land and Air Protection

ALR - Agricultural Land Reserve: Source: BC Land Reserve Commission

Zoning - Rural Land Use, Land Use and Zoning Bylaws, where bylaws are in place: Source: RDCK

Roads - Road centerline compiled 2003; Source: RDCK

Regional District of Central Kootenay
Box 590, 202 Lakeside Drive, Nelson, BC V1L 5R4
Phone: (250) 352-6665
Toll-Free 1-800-268-7325 (BC)
Fax: (250) 352-9500 Internet: www.rdck.bc.ca



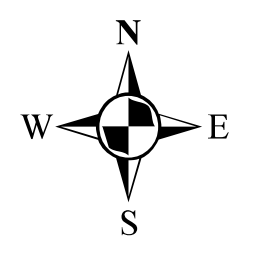
ELECTORAL AREA 'D' COMPREHENSIVE LAND USE PLAN BYLAW NO. 2435, 2016

Legend

- Electoral Area D
- Area D Comprehensive Land Use Plan Area
- Outside Plan Area

Protected Areas

- Streams
- Lakes
- MOF Recreation Site
- Trails
- Regional Park
- Provincial Park
- Valuable Fish Habitat



1:50,000

Map Projection: UTM Zone 11
Map Datum: NAD83

CAVEAT

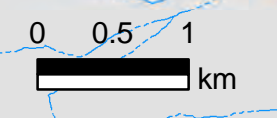
The boundaries of the Protected Areas listed in this bylaw together with explanatory legends, notations, or references in respect thereof, are delineated and described on the Protected Areas Map. The Protected Areas Map consists of the computer record compiled by means of a geographic information system. The Protected Areas Map is kept in the Office of the Secretary at the Regional District Office. The Protected Areas Map forms part of this bylaw. A generalized diagrammatic representation of the Protected Areas Map is annexed to this bylaw as Schedule B. The Protected Areas Map forming part of this bylaw is at a scale that provides clear and more detailed information than the generalized diagrammatic representation shown on Schedule 'B' of Bylaw No. 2435. In the event of a conflict of inconsistency between Schedule 'B' and the Protected Areas Map, and in the event that the Land Use Designation Map shows and provides more information than Schedule 'B', then in all such cases the Protected Areas Map shall govern.

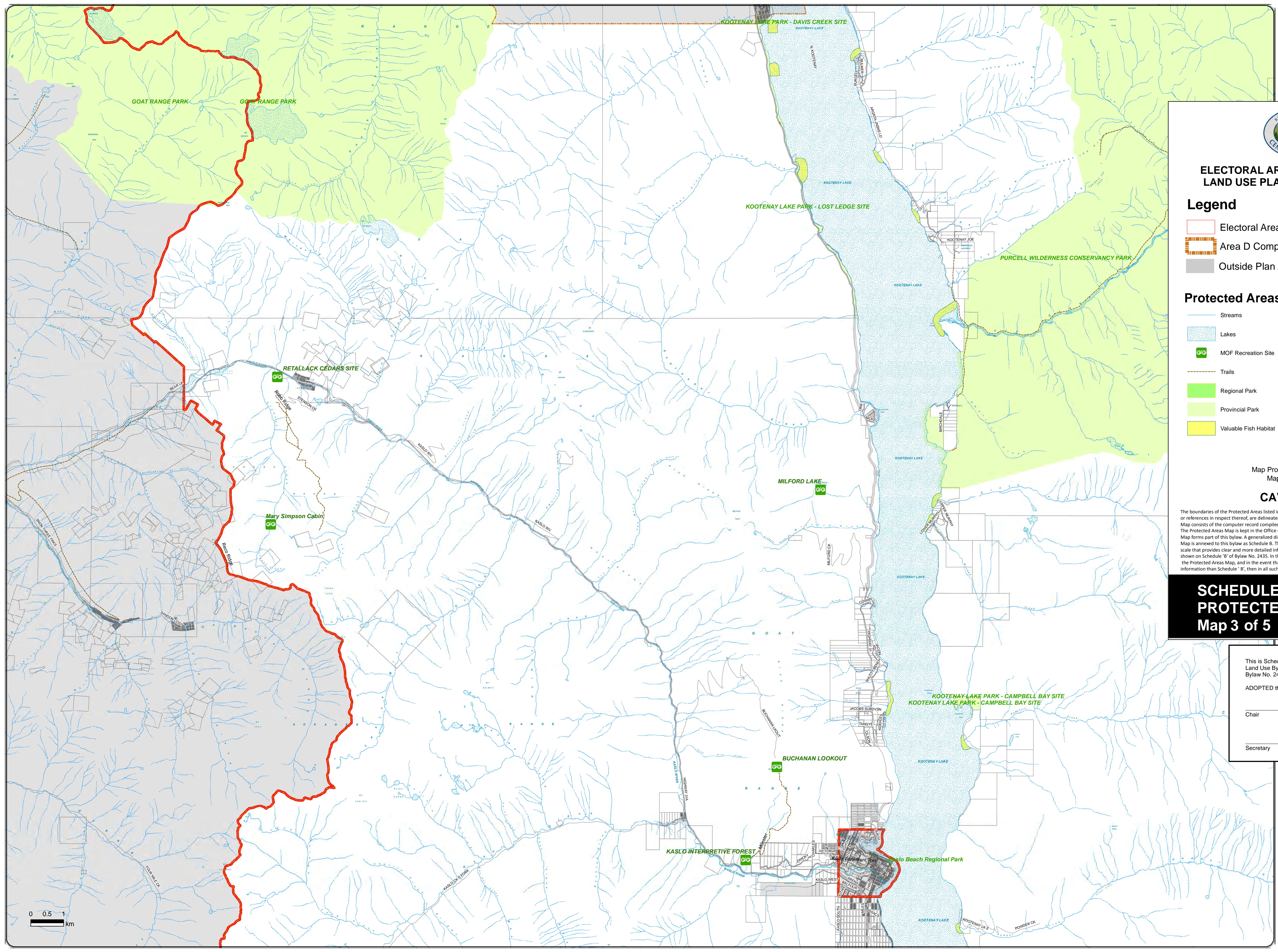
**SCHEDULE A3
PROTECTED AREAS
Map 2 of 5 South**

This is Schedule 'B3' Map 2 of 5 Electoral Area 'D' Comprehensive Land Use Bylaw No. 2435, 2016
ADOPTED this ____ day of _____, 2016
Chair _____
Secretary _____

DATA SOURCES

The following sources of data are updated as changes occur:
Cadastral Lot - Surveyed lots/parcels of land: Sources: Crown Land Registry Services and RDCK
District Lot: Source: Crown Land Registry Services, Integrated Cadastral Initiative (ICI) and RDCK
TRIM Data - Planimetry, Unsurveyed Roads, and Contours: Source: Ministry of Water, Land and Air Protection
ALR - Agricultural Land Reserve: Source: BC Land Reserve Commission
Zoning - Rural Land Use, Land Use and Zoning Bylaws, where bylaws are in place: Source: RDCK
Roads - Road centerline compiled 2003; Source: RDCK
Regional District of Central Kootenay
Box 590, 202 Lakeside Drive, Nelson, BC V1L 5R4
Phone: (250) 352-6665
Toll-Free 1-800-268-7325 (BC)
Fax: (250) 352-9300 Internet: www.rdck.bc.ca





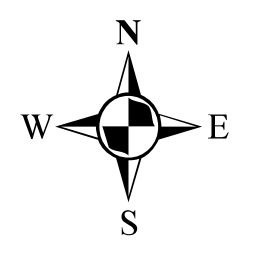
ELECTORAL AREA 'D' COMPREHENSIVE LAND USE PLAN BYLAW NO. 2435, 2016

Legend

- Electoral Area D
- Area D Comprehensive Land Use Plan Area
- Outside Plan Area

Protected Areas

- ~~~~~ Streams
- Lakes
- MOF Recreation Site
- ~~~~~ Trails
- Regional Park
- Provincial Park
- Valuable Fish Habitat



1:50,000

Map Projection: UTM Zone 11
Map Datum: NAD83

CAVEAT

The boundaries of the Protected Areas listed in this bylaw together with explanatory legends, notations, or references in respect thereof, are delineated and described on the Protected Areas Map. The Protected Areas Map consists of the computer record compiled by means of a geographic information system. The Protected Areas Map is kept in the Office of the Secretary at the Regional District Office. The Protected Areas Map forms part of this bylaw. A generalized diagrammatic representation of the Protected Areas Map is annexed to this bylaw as Schedule B. The Protected Areas Map forming part of this bylaw is at a scale that provides clear and more detailed information than the generalized diagrammatic representation shown on Schedule 'B' of Bylaw No. 2435. In the event of a conflict of inconsistency between Schedule 'B' and the Protected Areas Map, and in the event that the Land Use Designation Map shows and provides more information than Schedule 'B', then in all such cases the Protected Areas Map shall govern.

**SCHEDULE A3
PROTECTED AREAS
Map 3 of 5 Central**

This is Schedule 'B3' Map 3 of 5 Electoral Area 'D' Comprehensive Land Use Bylaw No. 2435, 2016

ADOPTED this ____ day of _____, 2016

Chair _____

Secretary _____

DATA SOURCES

The following sources of data are updated as changes occur:

Cadastral Lot - Surveyed lots/parcels of land:
Sources: Crown Land Registry Services and RDCK

District Lot: Source: Crown Land Registry Services, Integrated Cadastral Initiative (ICI) and RDCK

TRIM Data - Planimetry, Unsurveyed Roads, and Contours: Source: Ministry of Water, Land and Air Protection

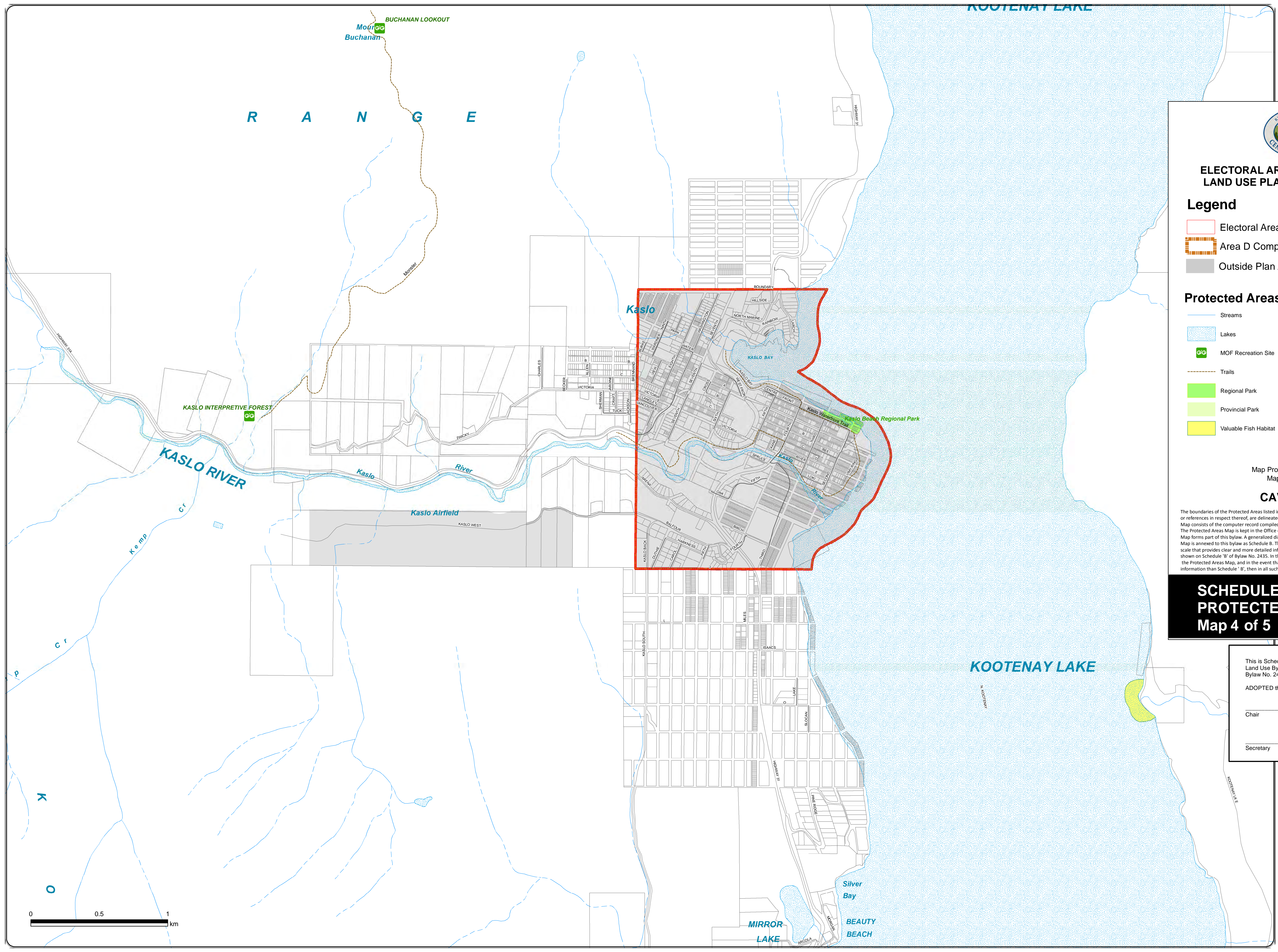
ALR - Agricultural Land Reserve: Source: BC Land Reserve Commission

Zoning - Rural Land Use, Land Use and Zoning Bylaws, where bylaws are in place: Source: RDCK

Roads - Road centerline compiled 2003; Source: RDCK

Regional District of Central Kootenay
Box 590, 202 Lakeside Drive, Nelson, BC V1L 5R4
Phone: (250) 352-6665
Toll-Free 1-800-268-7325 (BC)
Fax: (250) 352-9300 Internet: www.rdck.bc.ca

0 0.5 1 km



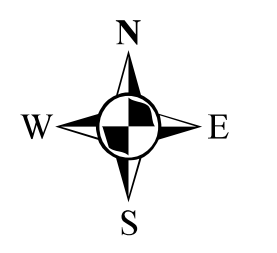
ELECTORAL AREA 'D' COMPREHENSIVE LAND USE PLAN BYLAW NO. 2435, 2016

Legend

- Electoral Area D
- Area D Comprehensive Land Use Plan Area
- Outside Plan Area

Protected Areas

- Streams
- Lakes
- MOF Recreation Site
- Trails
- Regional Park
- Provincial Park
- Valuable Fish Habitat



1:12,000

Map Projection: UTM Zone 11
Map Datum: NAD83

CAVEAT

The boundaries of the Protected Areas listed in this bylaw together with explanatory legends, notations, or references in respect thereof, are delineated and described on the Protected Areas Map. The Protected Areas Map consists of the computer record compiled by means of a geographic information system. The Protected Areas Map is kept in the Office of the Secretary at the Regional District Office. The Protected Areas Map forms part of this bylaw. A generalized diagrammatic representation of the Protected Areas Map is annexed to this bylaw as Schedule B. The Protected Areas Map forming part of this bylaw is at a scale that provides clear and more detailed information than the generalized diagrammatic representation shown on Schedule 'B' of Bylaw No. 2435. In the event of a conflict of inconsistency between Schedule 'B' and the Protected Areas Map, and in the event that the Land Use Designation Map shows and provides more information than Schedule 'B', then in all such cases the Protected Areas Map shall govern.

**SCHEDULE A3
PROTECTED AREAS
Map 4 of 5 Kaslo**

This is Schedule 'B3' Map 4 of 5 Electoral Area 'D' Comprehensive Land Use Bylaw No. 2435, 2016

ADOPTED this _____ day of _____, 2016

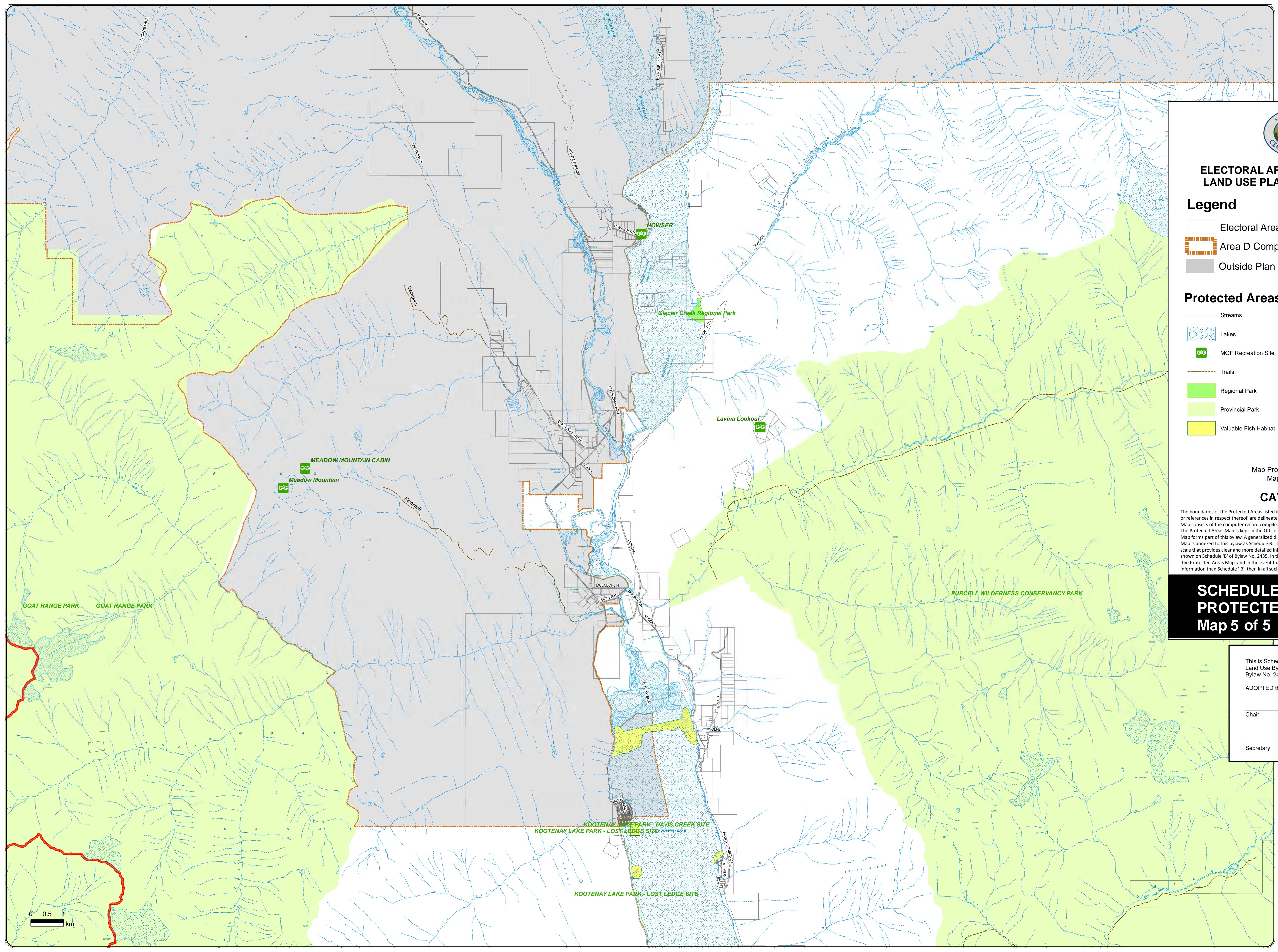
Chair _____

Secretary _____

DATA SOURCES

The following sources of data are updated as changes occur:

- Cadastral Lot - Surveyed lots/parcels of land: Sources: Crown Land Registry Services and RDCK
- District Lot: Source: Crown Land Registry Services, Integrated Cadastral Initiative (ICI) and RDCK
- TRIM Data - Planimetry, Unsurveyed Roads, and Contours: Source: Ministry of Water, Land and Air Protection
- ALR - Agricultural Land Reserve: Source: BC Land Reserve Commission
- Zoning - Rural Land Use, Land Use and Zoning Bylaws, where bylaws are in place: Source: RDCK
- Roads - Road centerline compiled 2003; Source: RDCK
- Regional District of Central Kootenay
Box 590, 202 Lakeside Drive, Nelson, BC V1L 5R4
Phone: (250) 352-6665
Toll-Free 1-800-268-7325 (BC)
Fax: (250) 352-9500 Internet: www.rdck.bc.ca



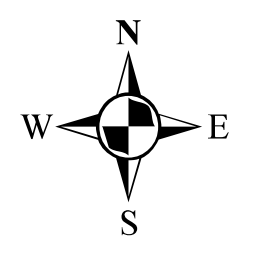
ELECTORAL AREA 'D' COMPREHENSIVE LAND USE PLAN BYLAW NO. 2435, 2016

Legend

- Electoral Area D
- Area D Comprehensive Land Use Plan Area
- Outside Plan Area

Protected Areas

- Streams
- Lakes
- MOF Recreation Site
- Trails
- Regional Park
- Provincial Park
- Valuable Fish Habitat



1:50,000

Map Projection: UTM Zone 11
Map Datum: NAD83

CAVEAT

The boundaries of the Protected Areas listed in this bylaw together with explanatory legends, notations, or references in respect thereof, are delineated and described on the Protected Areas Map. The Protected Areas Map consists of the computer record compiled by means of a geographic information system. The Protected Areas Map is kept in the Office of the Secretary at the Regional District Office. The Protected Areas Map forms part of this bylaw. A generalized diagrammatic representation of the Protected Areas Map is annexed to this bylaw as Schedule B. The Protected Areas Map forming part of this bylaw is at a scale that provides clear and more detailed information than the generalized diagrammatic representation shown on Schedule 'B' of Bylaw No. 2435. In the event of a conflict of inconsistency between Schedule 'B' and the Protected Areas Map, and in the event that the Land Use Designation Map shows and provides more information than Schedule 'B', then in all such cases the Protected Areas Map shall govern.

**SCHEDULE A3
PROTECTED AREAS
Map 5 of 5 North**

This is Schedule 'B3' Map 5 of 5 Electoral Area 'D' Comprehensive Land Use Bylaw No. 2435, 2016

ADOPTED this ____ day of ____, 2016

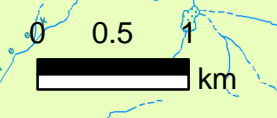
Chair _____

Secretary _____

DATA SOURCES

The following sources of data are updated as changes occur:

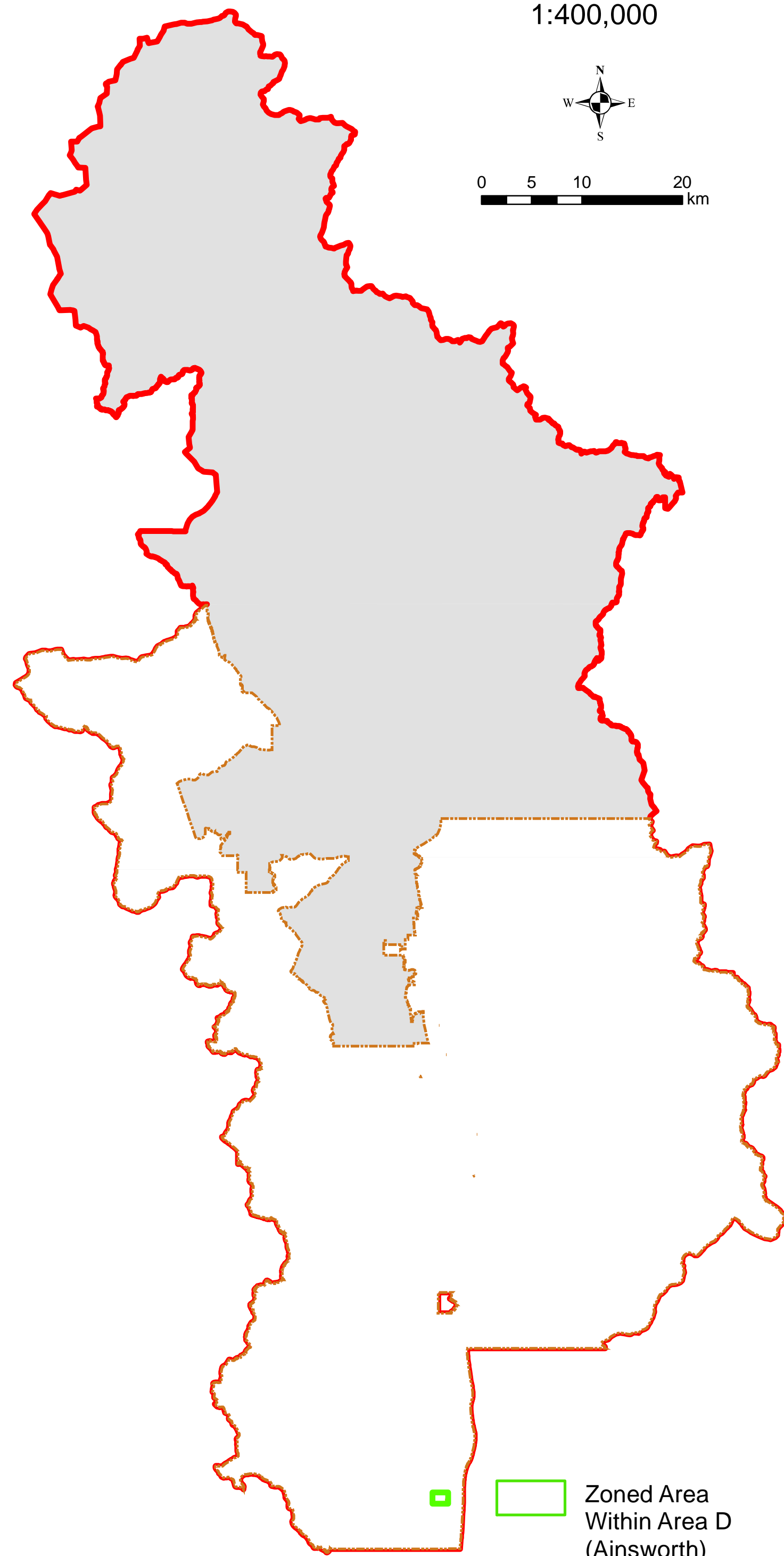
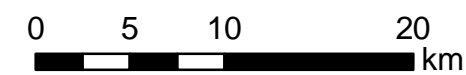
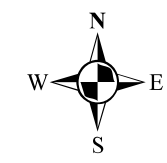
- Cadastral Lot - Surveyed lots/parcels of land: Sources: Crown Land Registry Services and RDCK
- District Lot: Source: Crown Land Registry Services, Integrated Cadastral Initiative (ICI) and RDCK
- TRIM Data - Planimetry, Unsurveyed Roads, and Contours: Source: Ministry of Water, Land and Air Protection
- ALR - Agricultural Land Reserve: Source: BC Land Reserve Commission
- Zoning - Rural Land Use, Land Use and Zoning Bylaws, where bylaws are in place: Source: RDCK
- Roads - Road centerline compiled 2003: Source: RDCK
- Regional District of Central Kootenay
Box 590, 202 Lakeside Drive, Nelson, BC V1L 5R4
Phone: (250) 352-6665
Toll-Free 1-800-268-7325 (BC)
Fax: (250) 352-9300 Internet: www.rdck.bc.ca





**ELECTORAL AREA 'D'
COMPREHENSIVE
LAND USE PLAN
BYLAW NO. 2435, 2016**

1:400,000

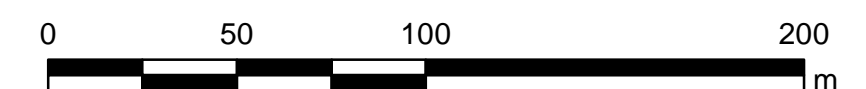
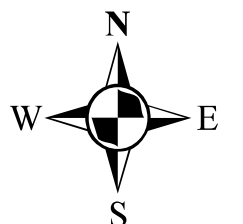


Zoned Area Within Area D (Ainsworth)

Legend

- Electoral Area D
- Area D Comprehensive Land Use Plan Area
- Outside Plan Area
- Zoning Class**
- General Commercial - C1
- Tourist Commercial - C2
- Ainsworth Resort Commercial - C3
- Community Service - CS
- Environmental Reserve - ER
- Parks and Recreation - PR
- Parks and Recreation Ainsworth Resort - PR1
- Suburban Residential - R1
- Rural Residential - R3
- RA - Resource Area

Map Projection: UTM Zone 11
Map Datum: NAD83
1:2,000



CAVEAT

The boundaries of the Zoning listed in this bylaw together with explanatory legends, notations, or references in respect thereof, are delineated and described on the Zoning Map. The Zoning Map consists of the computer record compiled by means of a geographic information system. The Zoning Map is kept in the Office of the Secretary at the Regional District Office. The Zoning Map forms part of this bylaw. A generalized diagrammatic representation of the Zoning Map is annexed to this bylaw as Schedule B. The Zoning Map forming part of this bylaw is at a scale that provides clear and more detailed information than the generalized diagrammatic representation shown on Schedule 'B' of Bylaw No. 2435. In the event of a conflict of inconsistency between Schedule 'B' and the Zoning Map, and in the event that the Zoning Map shows and provides more information than Schedule 'B', then in all such cases the Zoning Map shall govern.

**SCHEDULE B1
ZONING**

This is Schedule 'B4' Map Electoral Area 'D' Comprehensive Land Use Bylaw No. 2435, 2016

ADOPTED this ____ day of _____, 2016

Chair _____

Secretary _____

DATA SOURCES

The following sources of data are updated as changes occur:
 Cadastral Lot - Surveyed lots/parcels of land: Sources: Crown Land Registry Services and RDCK
 District Lot: Source: Crown Land Registry Services, Integrated Cadastral Initiative (ICI) and RDCK
 TRIM Data - Planimetry, Unsurveyed Roads, and Contours: Source: Ministry of Water, Land and Air Protection
 ALR - Agricultural Land Reserve: Source: BC Land Reserve Commission
 Zoning - Rural Land Use, Land Use and Zoning Bylaws, where bylaws are in place: Source: RDCK
 Roads - Road centerline compiled 2003; Source: RDCK
 Regional District of Central Kootenay
 Box 590, 202 Lakeside Drive, Nelson, BC V1L 5R4
 Phone: (250) 352-6665
 Toll-Free 1-800-268-7325 (BC)
 Fax: (250) 352-9500 Internet: www.rdck.bc.ca