



SLOCAN LAKE NORTH PORTION OF ELECTORAL AREA H OFFICIAL COMMUNITY PLAN BYLAW NO. 1967, 2009

SCHEDULE B.1 LAND DESIGNATION MAP

Legend

- Electoral Area
- Outside Plan Area
- Area H North OCP Area
- OCP Designation**
- Agricultural (AG)
- General Commercial (C1)
- Tourist Commercial (C2)
- Administrative & Institutional (I)
- Industrial (M1)
- Parks, Rec, Culture, and Heritage (PA)
- Suburban Residential (R1)
- Country Residential (R2)
- Rural Residential (R3)
- Multi-Family Residential (R4)
- Resource Area (RA)

Map Projection: UTM Zone 11
Map Datum: NAD83
Date Plotted: Jun 05, 2009

The boundaries of the Land Use Designations listed in this bylaw together with explanatory legends, notations, or references in respect thereof are delineated and described on the Land Use Designation Map. The Land Use Designation Map consists of the computer record compiled by means of a geographic information system. The Land Use Designation Map is kept in the Office of the Secretary at the Regional District Office. The Land Use Designation Map forms part of this bylaw. A generalized diagrammatic representation of the Land Use Designation Map is annexed to this bylaw as Schedule B.1.

The Land Use Designation Map forming part of this bylaw is at a scale that provides clear and more detailed information than the generalized diagrammatic representation shown on Schedule 'B.1' of Bylaw No. 1967, in the event of a conflict of inconsistency between Schedule 'B.1' and the Land Use Designation Map, and in the event that the Land Use Designation Map shows and provides more information than Schedule 'B.1', then in all such cases the Land Use Designation Map shall govern.

**Schedule B.1
Land Use Designation
Map 1 of 7
Cape Horn**

This is Schedule 'B.1' Map 1 of 7 of The Slocan Lake North Portion of Electoral Area 'H'-Official Community Plan Bylaw No. 1967, 2009.

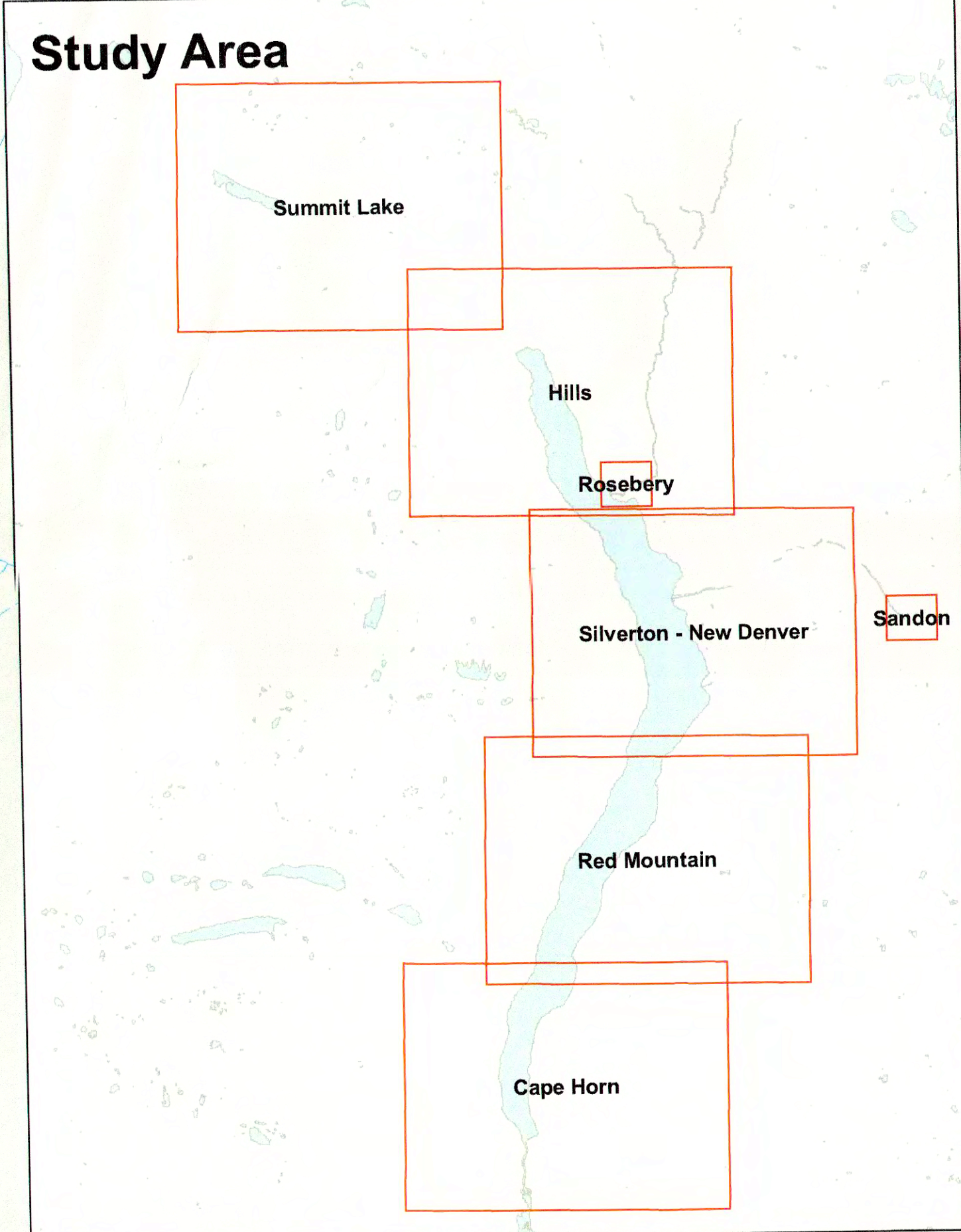
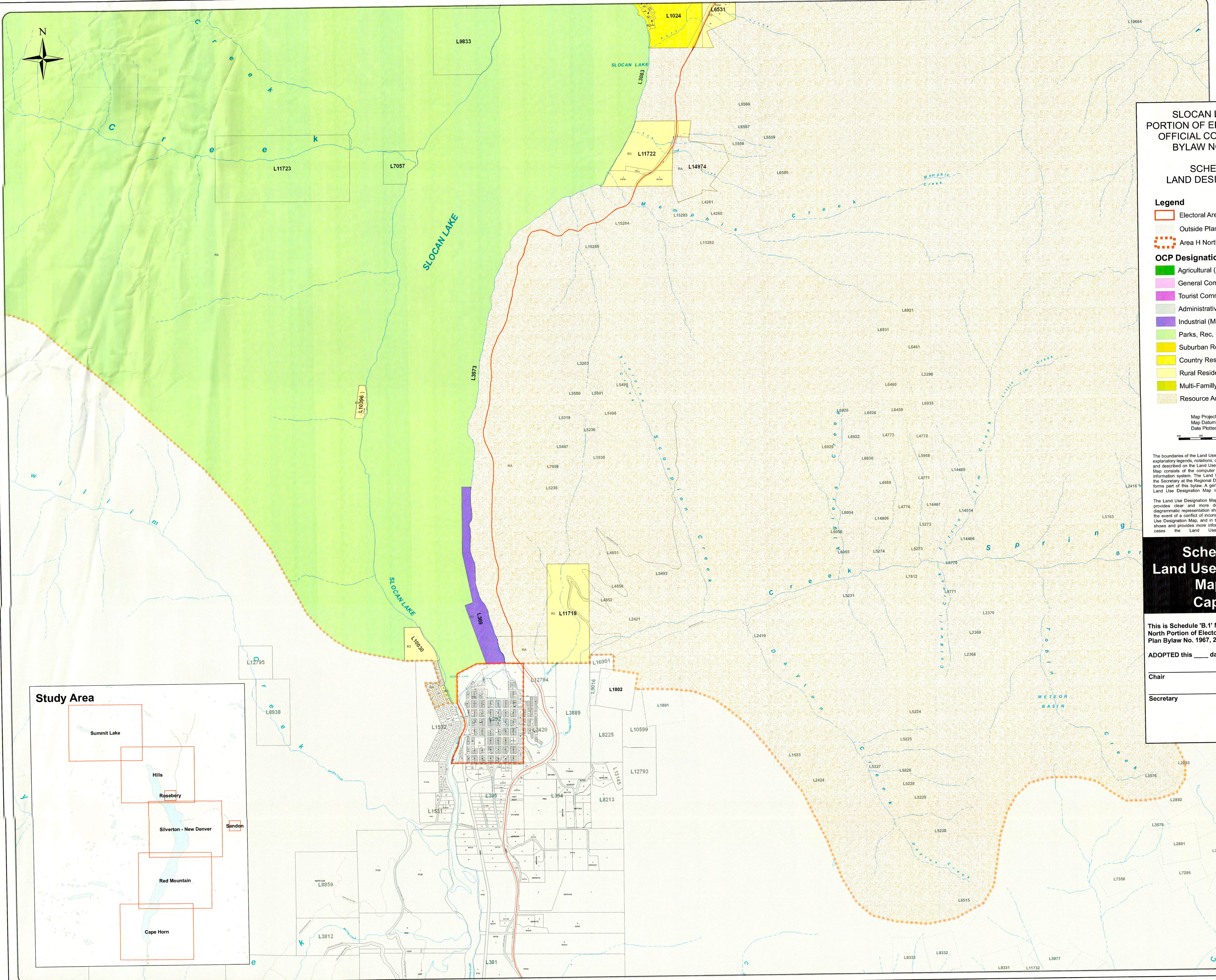
ADOPTED this ___ day of _____, 2009.

Chair _____

Secretary _____

DATA SOURCES

The following sources of data are updated as changes occur:
Cadastral Lot - Surveyed lots/parcels of land; Sources: Crown Land Registry Services and RDCK
District Lot: Source: Crown Land Registry Services; Integrated Cadastral Initiative (ICI) and RDCK
TRIM Data - Planimetry, Unsurveyed Roads, and Contours; Source: Ministry of Water, Land and Air Protection
ALR - Agricultural Land Reserve; Source: BC Land Reserve Commission
Zoning - Rural Land Use, Land Use and Zoning Bylaws, where bylaws are in place; Source: RDCK
Roads - Road centerline compiled 2003; Source: RDCK
Regional District of Central Kootenay
Box 590, 202 Lakeside Drive, Nelson, BC V1L 5P4
Phone: (250) 352-8665
Toll-Free: 1-800-265-7325 (BC)
Fax: (250) 352-9300 Internet: www.rdck.bc.ca



Slocan Lake North OCP
Bylaw 1967 Schedule B1
Map 1 of 7 - Schedule B.1
New Owner



SLOCAN LAKE NORTH PORTION OF ELECTORAL AREA H OFFICIAL COMMUNITY PLAN BYLAW NO. 1967, 2009

SCHEDULE B.1 LAND DESIGNATION MAP

Legend

- Electoral Area
- Outside Plan Area
- Area H North OCP Area
- OCP Designation**
- Agricultural (AG)
- General Commercial (C1)
- Tourist Commercial (C2)
- Administrative & Institutional (I)
- Industrial (M1)
- Parks, Rec, Culture, and Heritage (PA)
- Suburban Residential (R1)
- Country Residential (R2)
- Rural Residential (R3)
- Multi-Family Residential (R4)
- Resource Area (RA)

Map Projection: UTM Zone 11
Map Datum: NAD83
Date Plotted: Jun 01, 2009

The boundaries of the Land Use Designations listed in this bylaw together with explanatory legends, notations, or references in respect thereof, are delineated and described on the Land Use Designation Map. The Land Use Designation Map consists of the computer record compiled by means of a geographic information system. The Land Use Designation Map is kept in the Office of the Secretary at the Regional District Office. The Land Use Designation Map forms part of this bylaw. A generalized diagrammatic representation of the Land Use Designation Map is annexed to this bylaw as Schedule B.1.

Schedule B.1 Land Use Designation Map 3 of 7 Silverton - New Denver

This is Schedule 'B.1' Map 3 of 7 of The Slocan Lake North Portion of Electoral Area 'H'-Official Community Plan Bylaw No. 1967, 2009.

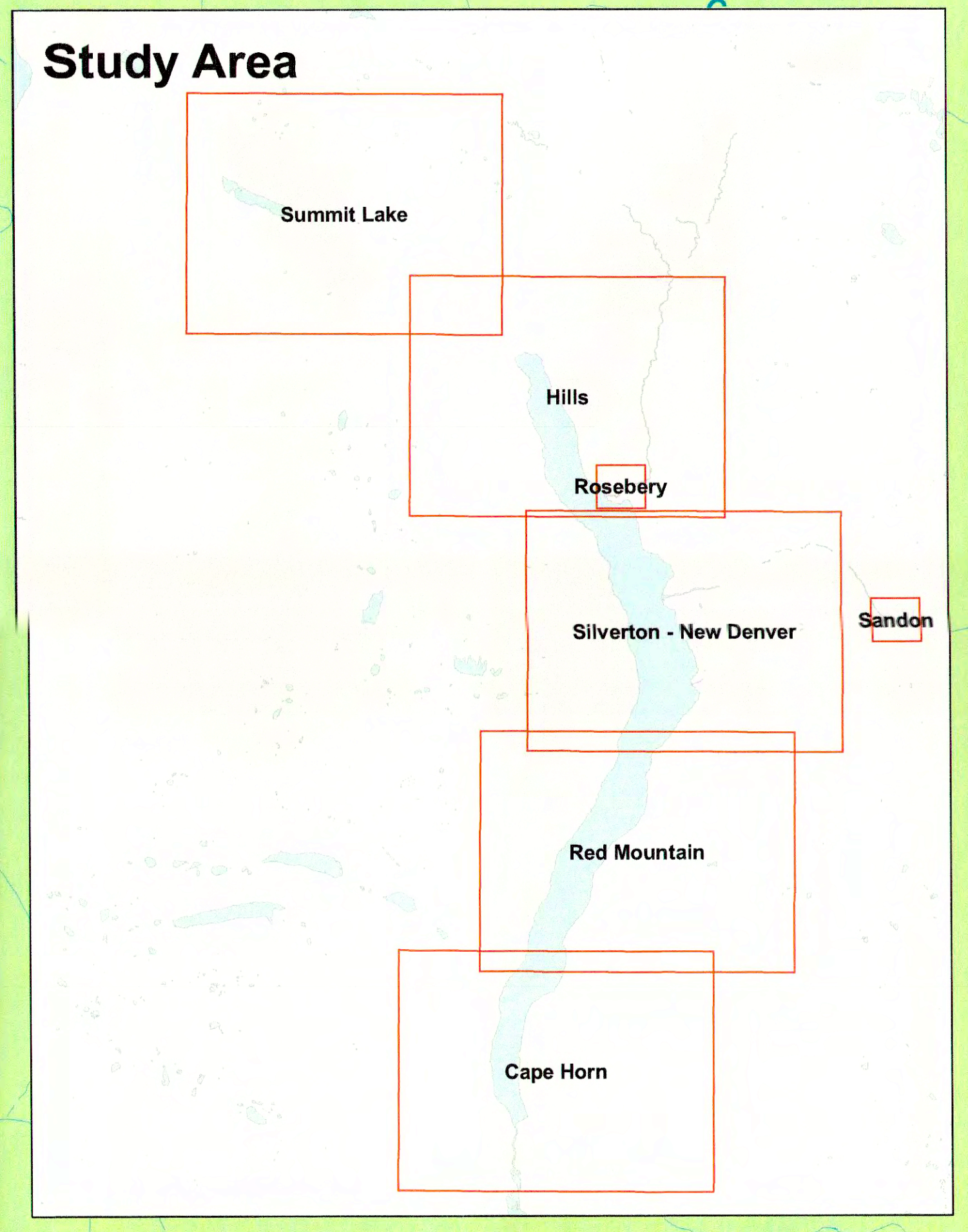
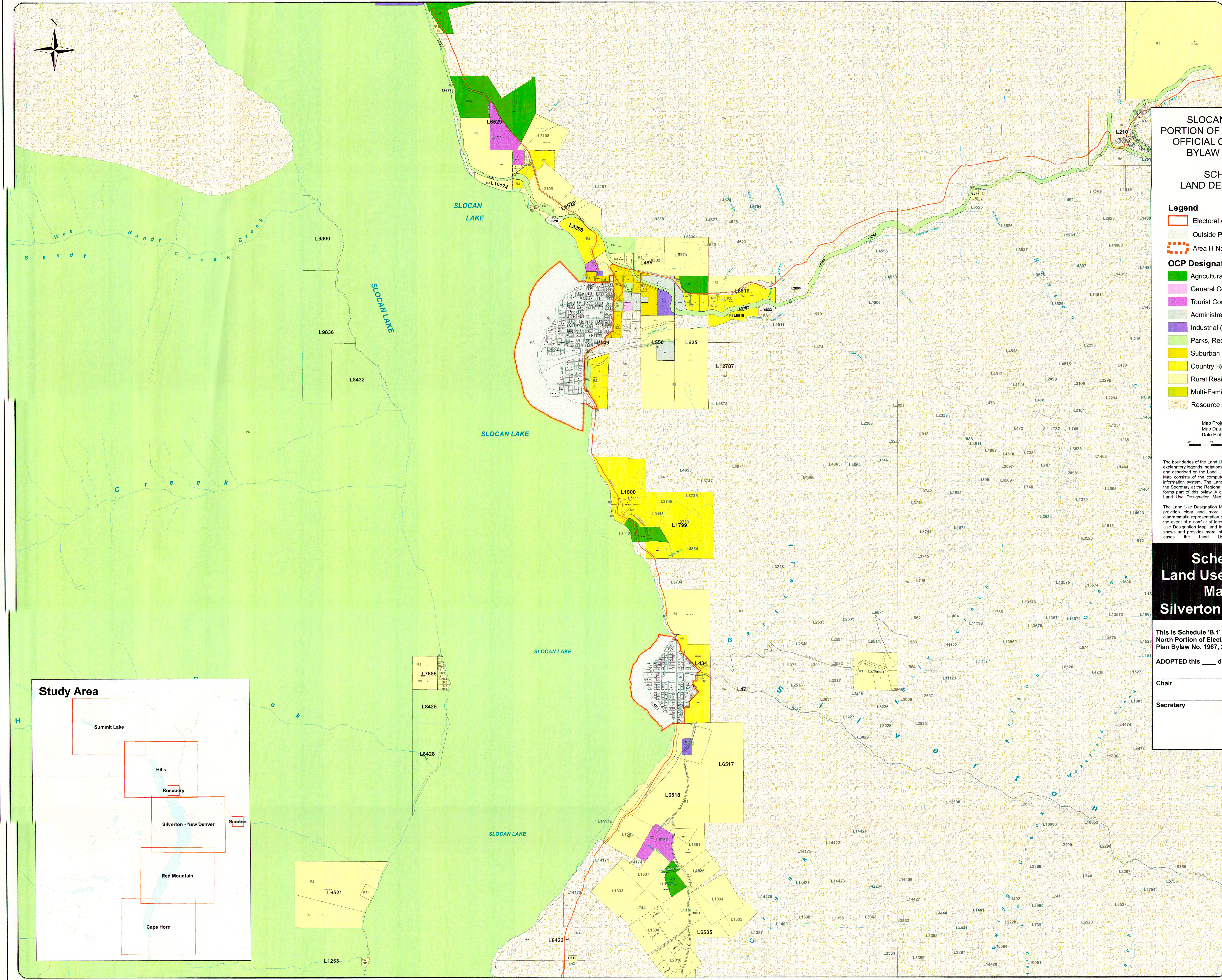
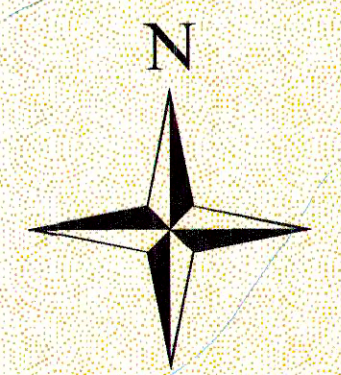
ADOPTED this ___ day of ___, 2009.

Chair _____

Secretary _____

DATA SOURCES

The following sources of data are updated as changes occur:
Cadastral Lot - Surveyed lots/parcels of land; Sources: Crown Land Registry Services and RDCK
District Lot: Source: Crown Land Registry Services, Integrated Cadastral Initiative (ICI) and RDCK
TRIM Data - Planimetry, Unsurveyed Roads, and Contours: Source: Ministry of Water, Land and Air Protection
ALR - Agricultural Land Reserve: Source: BC Land Reserve Commission
Zoning - Rural Land Use, Land Use and Zoning Bylaws, where bylaws are in place: Source: RDCK
Roads - Road centerline compiled 2003; Source: RDCK
Regional District of Central Kootenay
Box 500, 202 Lakeside Drive, Nelson, BC V1L 5R4
Phone: (250) 352-6688
Toll-Free: 1-800-368-7325 (BC)
Fax: (250) 352-9300 Internet: www.rdck.bc.ca





REGIONAL DISTRICT OF
CENTRAL KOOTENAY

SLOCAN LAKE NORTH
PORTION OF ELECTORAL AREA H
OFFICIAL COMMUNITY PLAN
BYLAW NO. 1967, 2009

SCHEDULE B.1
LAND DESIGNATION MAP

Legend

- Electoral Area
- Outside Plan Area
- Area H North OCP Area
- OCP Designation**
- Agricultural (AG)
- General Commercial (C1)
- Tourist Commercial (C2)
- Administrative & Institutional (I)
- Industrial (M1)
- Parks, Rec, Culture, and Heritage (PA)
- Suburban Residential (R1)
- Country Residential (R2)
- Rural Residential (R3)
- Multi-Family Residential (R4)
- Resource Area (RA)

Map Projection: UTM Zone 11
Map Datum: NAD83
Date Plotted: Jun 01, 2009

The boundaries of the Land Use Designations listed in this bylaw together with explanatory legends, notations, or references in respect thereof, are delineated and described on the Land Use Designation Map. The Land Use Designation Map consists of the computer record compiled by means of a geographic information system. The Land Use Designation Map is kept in the Office of the Secretary at the Regional District Office. The Land Use Designation Map forms part of this bylaw. A generalized diagrammatic representation of the Land Use Designation Map is annexed to this bylaw as Schedule B.1.

The Land Use Designation Map forming part of this bylaw is at a scale that provides clear and more detailed information than the generalized diagrammatic representation shown on Schedule B.1 of Bylaw No. 1967, in the event of a conflict of inconsistency between Schedule B.1 and the Land Use Designation Map, and in the event that the Land Use Designation Map shows and provides more information than Schedule B.1, then in all such cases the Land Use Designation Map shall govern.

**Schedule B.1
Land Use Designation
Map 4 of 7
Sandon**

This is Schedule 'B.1' Map 4 of 7 of The Slocan Lake North Portion of Electoral Area 'H'—Official Community Plan Bylaw No. 1967, 2009.

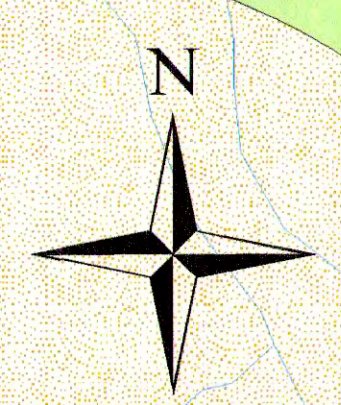
ADOPTED this ___ day of _____, 2009.

Chair _____

Secretary _____

DATA SOURCES

The following sources of data are updated as changes occur:
Cadastral Lot - Surveyed lots/parcels of land; Sources: Crown Land Registry Services and RDCK
District Lot: Source: Crown Land Registry Services, Integrated Cadastral Initiative (ICI) and RDCK
TRIM Data - Planimetry, Unsurveyed Roads, and Contours; Source: Ministry of Water, Land and Air Protection
ALR - Agricultural Land Reserve; Source: BC Land Reserve Commission
Zoning - Rural Land Use, Land Use and Zoning Bylaws, where bylaws are in place; Source: RDCK
Roads - Road centerline compiled 2003; Source: RDCK
Regional District of Central Kootenay
Box 590, 202 Lakeside Drive, Nelson, BC V1L 5G4
Phone: (250) 352-6665
Toll-Free 1-800-268-7325 (BC)
Fax: (250) 352-6300 Internet: www.rdck.bc.ca



L5195

L3154

L3264

L1648

L2032
97521

L5194

L809

L6870

L2139

Tributary Cr
L2029

L2031

L2030

L727

L482

L4878

L2036

L840

L5368

L841

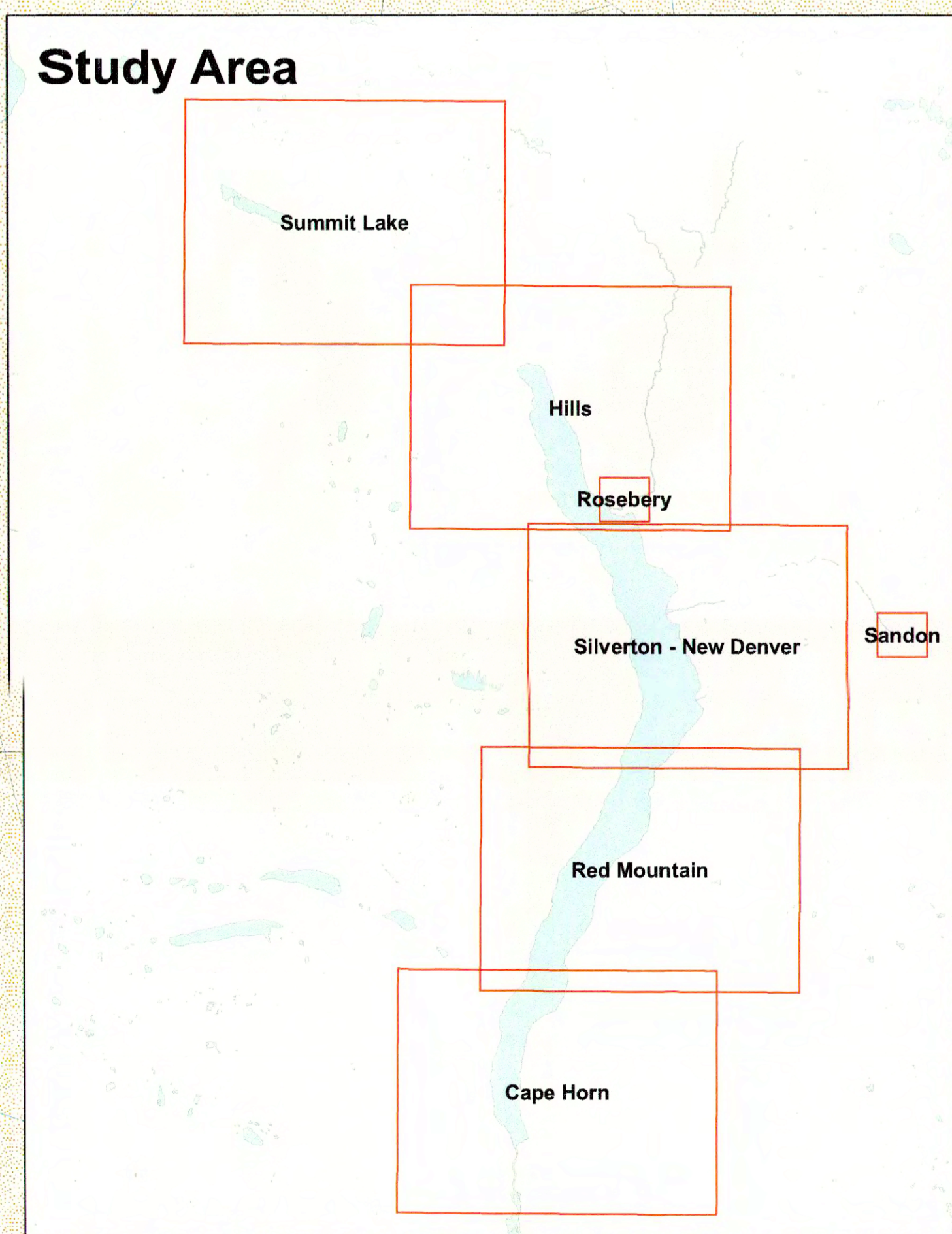
L6522

L842

L1845

L754

L4858



Slocan Valley North OCP
Bylaw 1967 Schedule B.1
Land Use Designations
Map 4 of 7 Sandon



REGIONAL DISTRICT OF CENTRAL KOOTENAY

SLOCAN LAKE NORTH
PORTION OF ELECTORAL AREA H
OFFICIAL COMMUNITY PLAN
BYLAW NO. 1967, 2009

SCHEDULE B.1
LAND DESIGNATION MAP

Legend

- Electoral Area
- Outside Plan Area
- Area H North OCP Area
- OCP Designation**
- Agricultural (AG)
- General Commercial (C1)
- Tourist Commercial (C2)
- Administrative & Institutional (I)
- Industrial (M1)
- Parks, Rec, Culture, and Heritage (PA)
- Suburban Residential (R1)
- Country Residential (R2)
- Rural Residential (R3)
- Multi-Family Residential (R4)
- Resource Area (RA)

Map Projection: UTM Zone 11
Map Datum: NAD83
Date Plotted: Jun 01, 2009

The boundaries of the Land Use Designations listed in this bylaw together with explanatory legends, notations, or references in respect thereof, are delineated and described on the Land Use Designation Map. The Land Use Designation Map consists of the computer records compiled by means of a geographic information system. The Land Use Designation Map is kept in the Office of the Secretary at the Regional District Office. The Land Use Designation Map forms part of this bylaw. A generalized diagrammatic representation of the Land Use Designation Map is annexed to this bylaw as Schedule B.1.

The Land Use Designation Map forming part of this bylaw is at a scale that provides clear and more detailed information than the generalized diagrammatic representation shown on Schedule "B.1" of Bylaw No. 1967. In the event of a conflict of inconsistency between Schedule "B.1" and the Land Use Designation Map, and in the event that the Land Use Designation Map shows and provides more information than Schedule "B.1", then in all such cases the Land Use Designation Map shall govern.

**Schedule B.1
Land Use Designation
Map 5 of 7
Hills**

This is Schedule "B.1" Map 5 of 7 of the Slocan Lake North Portion of Electoral Area "H"-Official Community Plan Bylaw No. 1967, 2009.

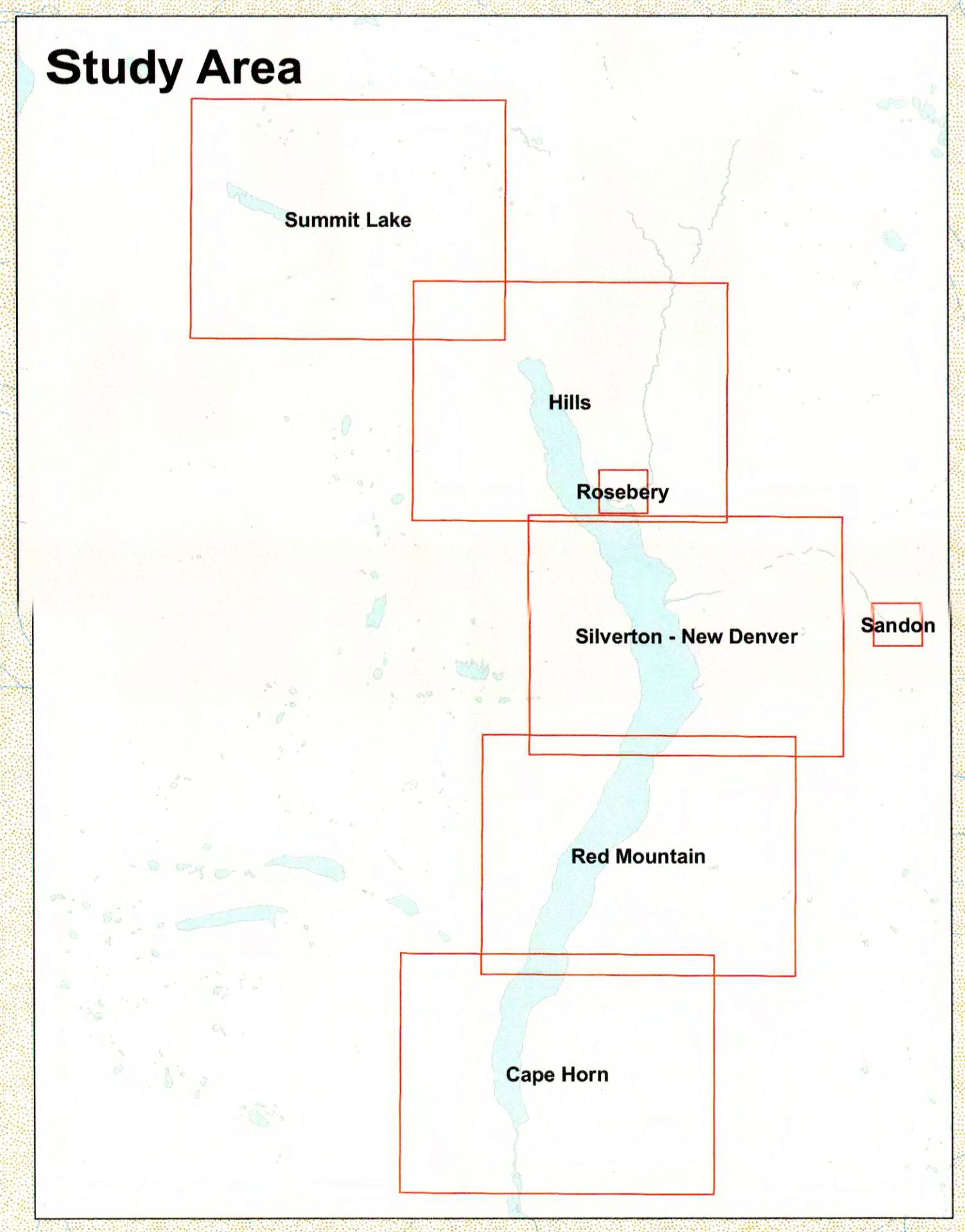
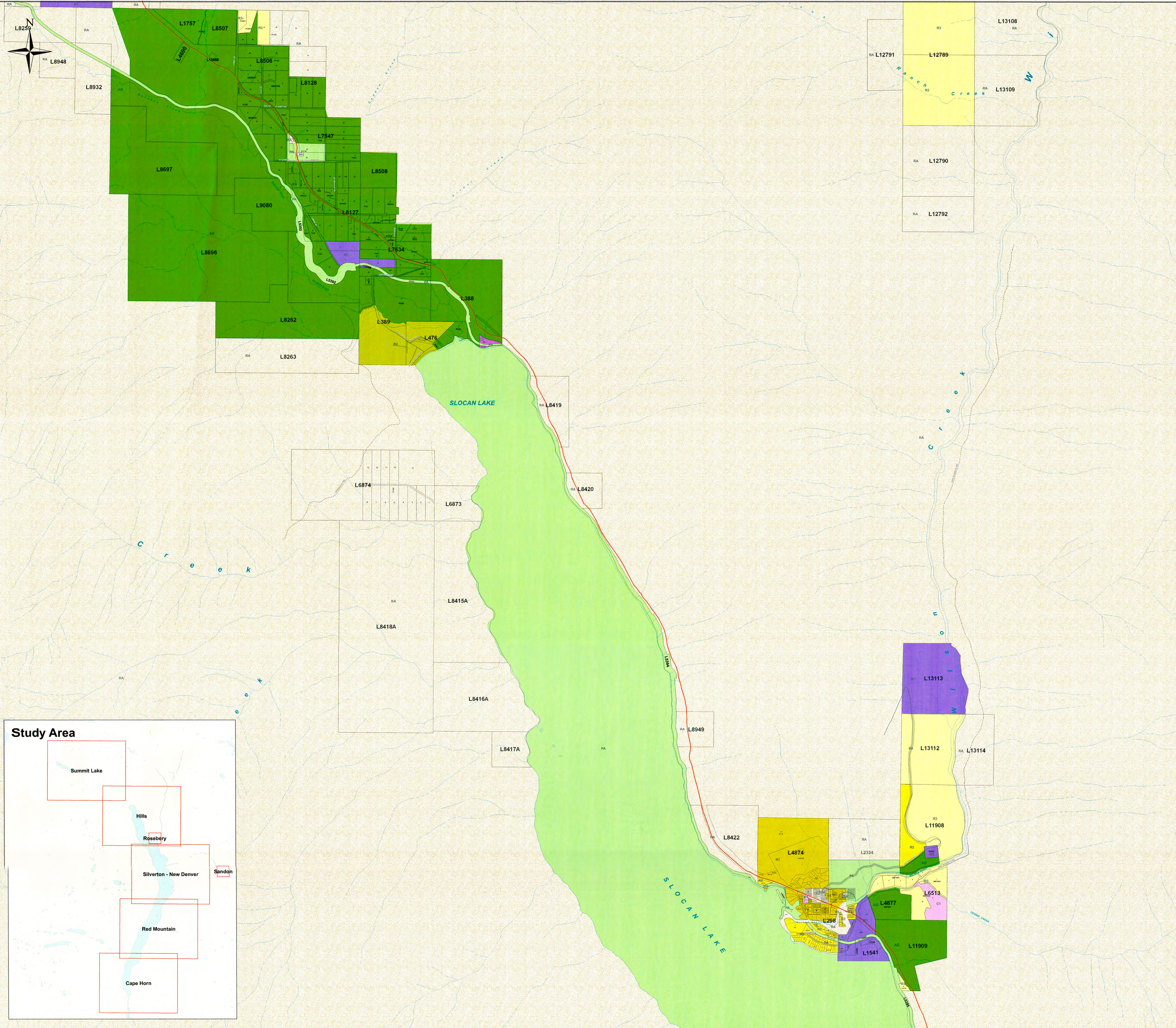
ADOPTED this ___ day of ___, 2009.

Chair _____

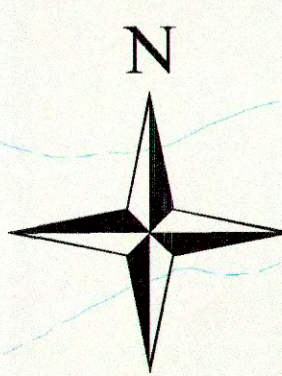
Secretary _____

DATA SOURCES

The following sources of data are updated as changes occur:
Cadastral Lot - Surveyed lots/parcels of land; Source: Crown Land Registry Services and RDCK
District Lot - Source: Crown Land Registry Services, Integrated Cadastral Initiative (ICI) and RDCK
TRIM Data - Planimetry, Unsurveyed Roads, and Contours; Source: Ministry of Water, Land and Air Protection
ALR - Agricultural Land Reserve; Source: BC Land Reserve Commission
Zoning - Rural Land Use, Land Use and Zoning Bylaws, where bylaws are in place; Source: RDCK
Roads - Road centerline compiled 2003; Source: RDCK
Regional District of Central Kootenay
Box 590, 202 Lakeside Drive, Nelson, BC V1L 6S4
Phone: (250) 352-6665
Toll-Free 1-800-268-7325 (BC)
Fax: (250) 352-6300 Internet: www.rdck.bc.ca



Slocan Lake North OCP
Land Use Designations
Map 5 of 7 - Hills



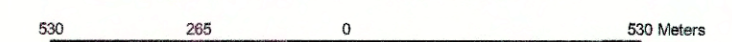
SLOCAN LAKE NORTH
PORTION OF ELECTORAL AREA H
OFFICIAL COMMUNITY PLAN
BYLAW NO. 1967, 2009

SCHEDULE B.1
LAND DESIGNATION MAP

Legend

- Electoral Area
- Outside Plan Area
- Area H North OCP Area
- OCP Designation**
- Agricultural (AG)
- General Commercial (C1)
- Tourist Commercial (C2)
- Administrative & Institutional (I)
- Industrial (M1)
- Parks, Rec, Culture, and Heritage (PA)
- Suburban Residential (R1)
- Country Residential (R2)
- Rural Residential (R3)
- Multi-Family Residential (R4)
- Resource Area (RA)

Map Projection: UTM Zone 11
Map Datum: NAD83
Date Plotted: Jun 01, 2009



The boundaries of the Land Use Designations listed in this bylaw together with explanatory legends, notations, or references in respect thereof, are delineated and described on the Land Use Designation Map. The Land Use Designation Map consists of the computer record compiled by means of a geographic information system. The Land Use Designation Map is kept in the Office of the Secretary at the Regional District Office. The Land Use Designation Map forms part of this bylaw. A generalized diagrammatic representation of the Land Use Designation Map is annexed to this bylaw as Schedule B.1.

The Land Use Designation Map forming part of this bylaw is at a scale that provides clear and more detailed information than the generalized diagrammatic representation shown on Schedule B.1 of Bylaw No. 1967. In the event of a conflict of inconsistency between Schedule B.1 and the Land Use Designation Map, and in the event that the Land Use Designation Map shows and provides more information than Schedule B.1, then in all such cases the Land Use Designation Map shall govern.

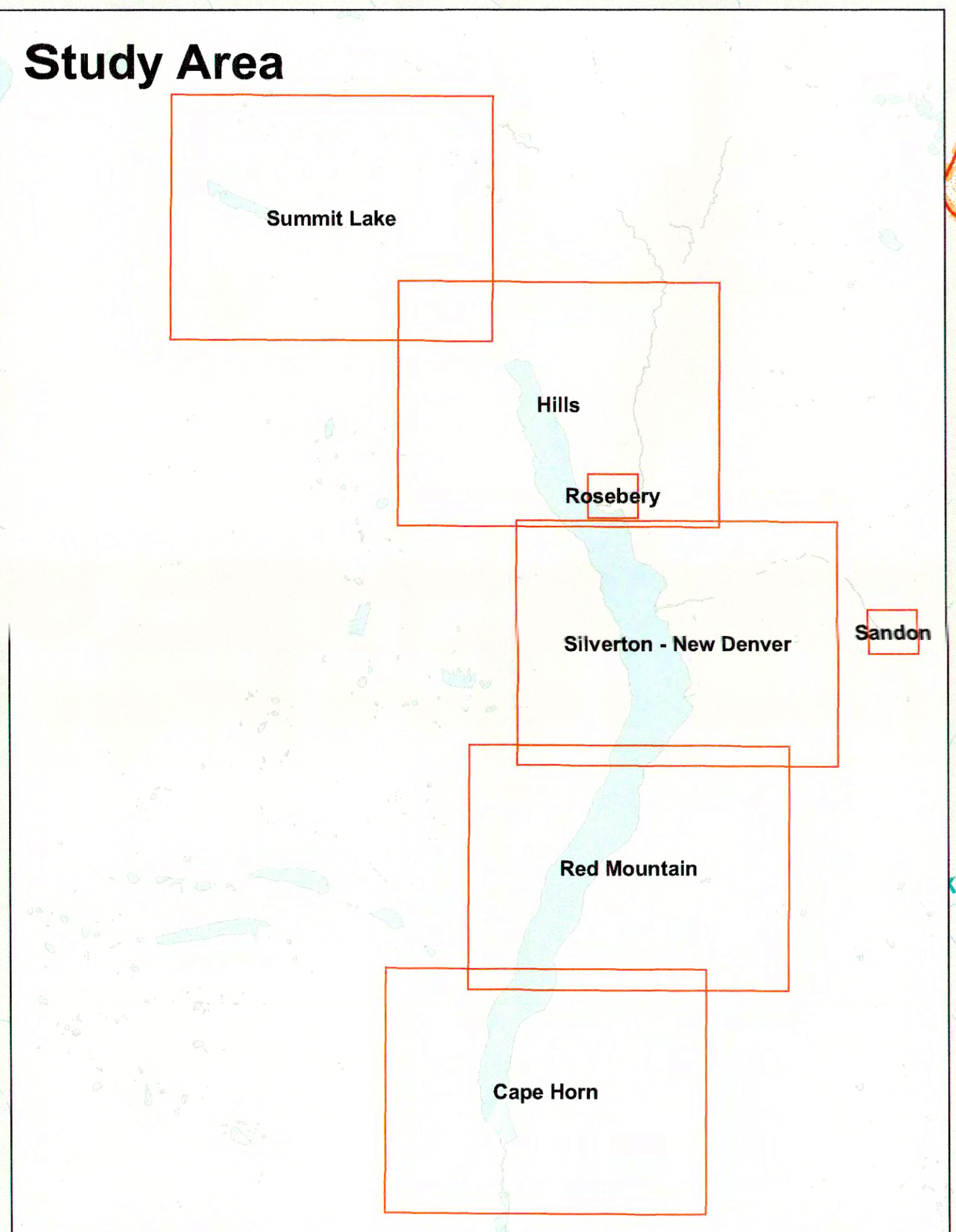
**Schedule B.1
Land Use Designation
Map 6 of 7
Summit Lake**

This is Schedule 'B.1' Map 6 of 7 of The Slocan Lake North Portion of Electoral Area 'H'—Official Community Plan Bylaw No. 1967, 2009.

ADOPTED this ___ day of _____, 2009.

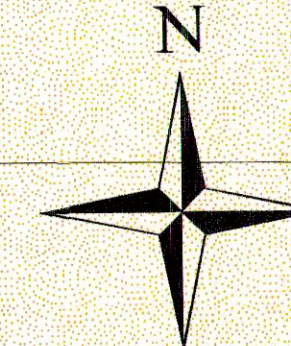
Chair _____

Secretary _____



DATA SOURCES

The following sources of data are updated as changes occur:
Cadastral Lot - Surveyed lots/parcels of land; Sources: Crown Land Registry Services and RDCK
District Lot; Source: Crown Land Registry Services, Integrated Cadastral Initiative (ICI) and RDCK
TRIM Data - Planimetry, Unsurveyed Roads, and Contours; Source: Ministry of Water, Land and Air Protection
ALR - Agricultural Land Reserve; Source: BC Land Reserve Commission
Zoning - Rural Land Use, Land Use and Zoning Bylaws, where bylaws are in place; Source: RDCK
Roads - Road centerline compiled 2003; Source: RDCK
Regional District of Central Kootenay
Box 590, 202 Lakeside Drive, Nelson, BC V1L 2S4
Phone: (250) 352-6665
Toll-Free 1-800-268-7325 (BC)
Fax: (250) 352-6900 Internet: www.rdkc.bc.ca



SLOCAN LAKE NORTH PORTION OF ELECTORAL AREA H OFFICIAL COMMUNITY PLAN BYLAW NO. 1967, 2009

SCHEDULE B.1 LAND DESIGNATION MAP

Legend

- Electoral Area
- Outside Plan Area
- Area H North OCP Area
- OCP Designation**
- Agricultural (AG)
- General Commercial (C1)
- Tourist Commercial (C2)
- Administrative & Institutional (I)
- Industrial (M1)
- Parks, Rec, Culture, and Heritage (PA)
- Suburban Residential (R1)
- Country Residential (R2)
- Rural Residential (R3)
- Multi-Family Residential (R4)
- Resource Area (RA)

Map Projection: UTM Zone 11
Map Datum: NAD83
Date Plotted: Nov 06, 2009

The boundaries of the Land Use Designations listed in this bylaw together with explanatory legends, notations, or references in respect thereof, are delineated and described on the Land Use Designation Map. The Land Use Designation Map consists of the computer record compiled by means of a geographic information system. This Land Use Designation Map is kept in the Office of the Secretary at the Regional District Office. The Land Use Designation Map forms part of this bylaw. A generalized diagrammatic representation of the Land Use Designation Map is annexed to this bylaw as Schedule B.1.

The Land Use Designation Map forming part of this bylaw is at a scale that provides clear and more detailed information than the generalized diagrammatic representation shown on Schedule B.1 of Bylaw No. 1967. In the event of a conflict of inconsistency between Schedule B.1 and the Land Use Designation Map, and in the event that the Land Use Designation Map shows and provides more information than Schedule B.1, then in all such cases the Land Use Designation Map shall govern.

**Schedule B.1
Land Use Designation
Map 7 of 7
Rosebery**

This is Schedule 'B.1' Map 7 of 7 of The Slocan Lake North Portion of Electoral Area 'H'-Official Community Plan Bylaw No. 1967, 2009.

ADOPTED this ___ day of _____, 2009.

Chair _____

Secretary _____

DATA SOURCES

The following sources of data are updated as changes occur:
Cadastral Lot - Surveyed lots/parcels of land; Source: Crown Land Registry Services and RDCK
District Lot; Source: Crown Land Registry Services, Integrated Cadastral Initiative (ICI) and RDCK
TRIM Data - Planimetry, Unsurveyed Roads, and Contours; Source: Ministry of Water, Land and Air Protection
ALR - Agricultural Land Reserve; Source: BC Land Reserve Commission
Zoning - Rural Land Use, Land Use and Zoning Bylaws, where bylaws are in place; Source: RDCK
Roads - Road centerline compiled 2003; Source: RDCK
Regional District of Central Kootenay
Box 590, 202 Lakeside Drive, Nelson, BC V1L 6R4
Phone: (250) 352-6655
Toll-Free 1-800-268-7325 (BC)
Fax: (250) 352-8300 Internet: www.rdck.bc.ca

2

L4874

L2334

L11908

852901

WILSON RIVER

NEP70681

NEP70681

L16331

L4877

L6513

WILSON CREEK

L298

NEP74251

NEP6984

L5395

L16258

L11909

L15405

L1541

